



DATA SHEET

Water-Proof Biometric / Card Reader



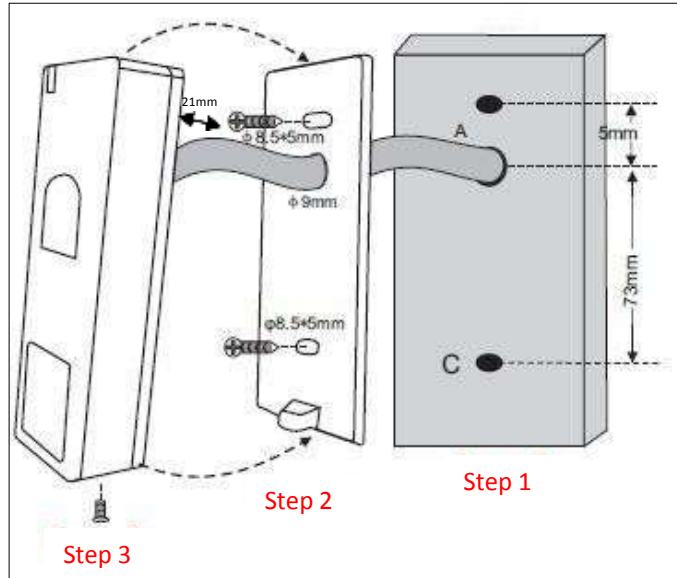
TW-F1

- Power supply: 12V DC <45mA
- Capacity: 3000 Users (1000 Fingerprints and 2000 Cards)
- Fingerprint and 125KHz RFID card
- Water-proof, IP66
- Allowed operating temperature: -30 °C to 60 °C
- Type of card: In 125KHz
- Weight: 150g
- Size: 128 x 48 x 26 mm
- Several operating modes:
 - Standalone
 - Reader
 - Along with another TW-F1 reader with interlock function



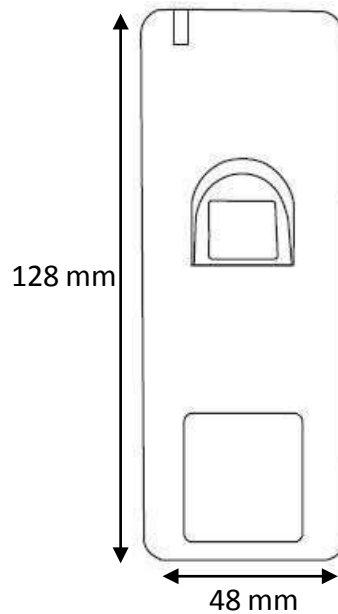


Installation (mounting)



Units: mm

Dimensions





Setting and Operating Mode

Attention: The entire programming is carried out with the IR command.

Note: The reader needs to be in the programming mode in order to be able of performing the commands.

Enter programming mode	* 123456 # NOTE: The factory-default programming password is 123456
Exit programming mode	Press *

Modify the programming password

Instruction	Programming code
1. Enter the programming mode	* 123456 #
2. Modify the programming password	0 (New password) # (Repeat new password) # Note: The programming code needs to always have 6 digits, this code does not work for the opening.
3. Exit the programming mode	*

Add fingerprint with ADD CARD master card

Instruction	Programming code
1. Enter programming mode	Use ADD CARD master card
2. Add fingerprint (With automatic ID)	Pass the finger with the fingerprint to be added + repeat the fingerprint action
3. Exit the programming mode	Use ADD CARD master card

Add fingerprints with automatic ID assignation

Instruction	Programming code
1. Enter the programming mode	* (Programming password) #
2. Add fingerprint (With automatic ID)	1 (Fingerprint) (Repeat fingerprint) Note: If the led starts blinking in green light it means that the operation was successful. Fingerprints can be added continuously.
3. Exit the programming mode	*





Add fingerprints with a specific ID

Instruction	Programming mode
1. Enter programming mode	* (Programming password) #
2. Add fingerprint (With automatic ID)	1 (ID from 1 to 1000) # (Fingerprint) (Repeat fingerprint) Note: If the led starts blinking in green light it means the operation was successful. Fingerprints can be added continuously.
3. Exit programming mode	*

Add cards using the ADD CARD master card

Instruction	Programming code
1. Enter programming mode	Use the ADD CARD master card
2. Add card (With automatic ID)	Use (On the reader) the card to be added
3. Exit programming mode	Use the ADD CARD master card

Add cards with automatic ID assignment

Instruction	Programming code
1. Enter the programming mode	* (Programming password) #
2. Add card (With automatic ID)	1 (Read card)
3. Exit programming mode	*

Add card with a specific ID

Instruction	Programming code
1. Enter de programming mode	* (Programming password) #
2. Add user	1 (ID from 1001 to 3000) # (Use card on the reader)
3. Exit programming mode	*





Delete fingerprint users using the DELETE CARD master card

Instruction	Programming code
1. Enter the programming mode	Use the DELETE CARD master card
2. Delete fingerprint (With automatic ID)	Pass the finger with the fingerprint to be deleted + repeat fingerprint
3. Exit the programming mode	Use the DELETE CARD master card on the reader

Delete fingerprint users

Instruction	Programming code
1. Enter the programming mode	* (Programming password) #
2. Delete fingerprint	2 (Fingerprint to be deleted)
3. Exit programming mode	*

Delete card users using the DELETE CARD master card

Instruction	Programming code
1. Enter the programming mode	Use the DELETE CARD master card
2. Delete card (With automatic ID)	Card to be deleted
3. Exit the programming mode	Use DELETE CARD master card

Delete card

Instruction	Programming code
1. Enter programming mode	* (Programming password) #
2. Delete card	2 (Card to be deleted)
3. Exit the programming mode	*

Delete card by card number

Instruction	Programming code
1. Enter the programming mode	* (Programming password) #
2. Delete card	2 (Card number) #
3. Exit the programming mode	*





Delete card or fingerprint with a specific ID

Instruction	Programming code
1. Enter the programming mode	* (Programming password) #
2. Delete user	2 (ID to be deleted) #
3. Exit the programming mode	*

Delete all cards and fingerprints

Instruction	Programming code
1. Enter the programming mode	* (Programming password) #
2. Delete all users	2 (Programming password) #
3. Exit programming mode	*

Timer

Instruction	Programming code
1. Enter the programming mode	* (Programming password) #
2. Timer	Timer: 3 (1 to 99 seconds) #
3. Exit programming mode	*

Access mode

Instruction	Programming code
1. Enter programming mode	* (Programming password) #
2. Access mode	Only card: 40 # Card or fingerprint: 42 # Only fingerprint: 43 # (factory default)
3. Exit programming	*





Other Functions

Interlock access mode (Two TW-F1 readers connected to each other)

Instruction	Programming code
1. Enter the programming mode	* (Programming password) #
2. Access mode	Interlock off: 62 # Interlock ON: 63 # NOTE: Add all users in both TW-F1 readers and only then activate the interlock function.
3. Exit the programming mode	*

Reset

1. Disconnect the power supply.
2. Connect the yellow wire to the black wire (or if there is an exit button, press it).
3. Connect the power supply (with wires already connected or by pressing the button) until there are 2 beeps and the led is steady in yellow.
3. If there are the ADD and DELETE cards, add first the ADD card and immediately after the DELETE card (in that order).
5. Led is steady in red.

ATTENTION: User data is not deleted.





Triplo W



Warranty

Every product marketed by Triplo W Lda., have a two-year warranty for manufacturing defects. Every equipment sold is checked at our facilities for defects; and if it is unrepairable, it shall be replaced with a new product, according to the corresponding warranty.

For additional information check our conditions of sale at:

<http://www.triplow.pt/loja/termos-e-condicoes>

