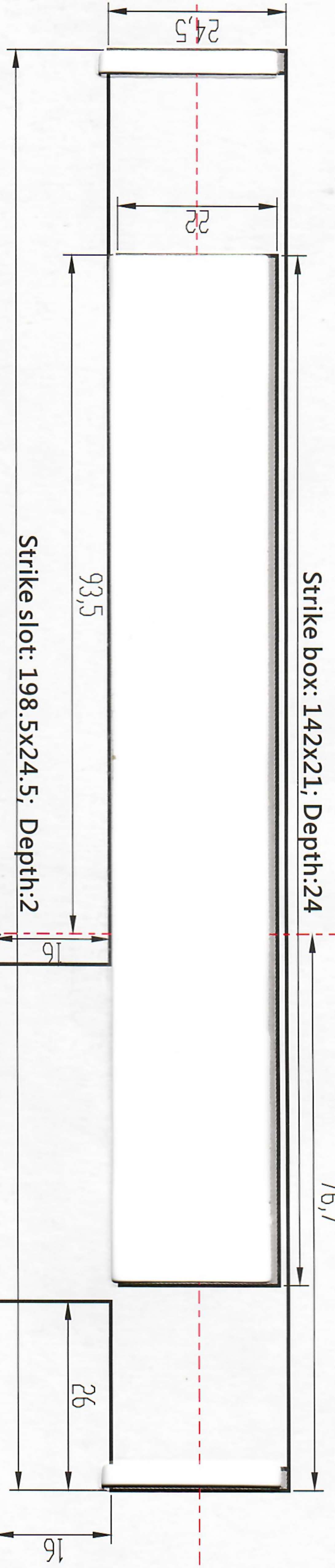


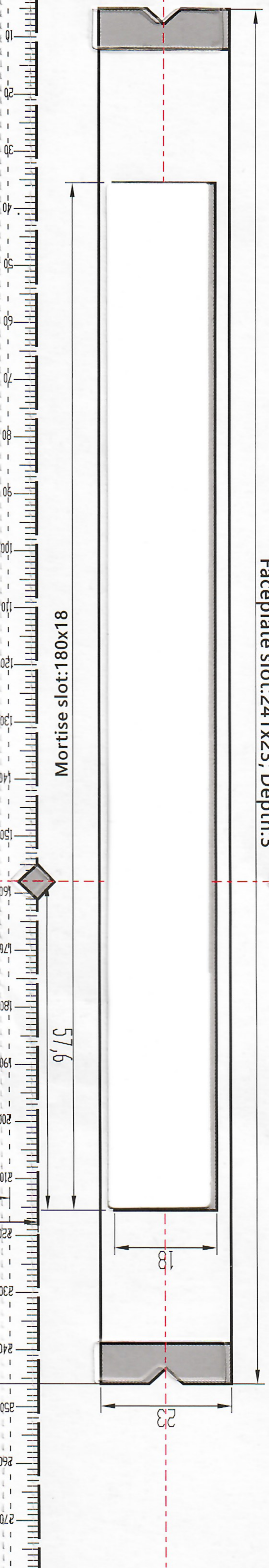
Strike box: 142x21; Depth:24

76,7



Strike slot: 198.5x24.5; Depth:2

Faceplate slot:24x23; Depth:3



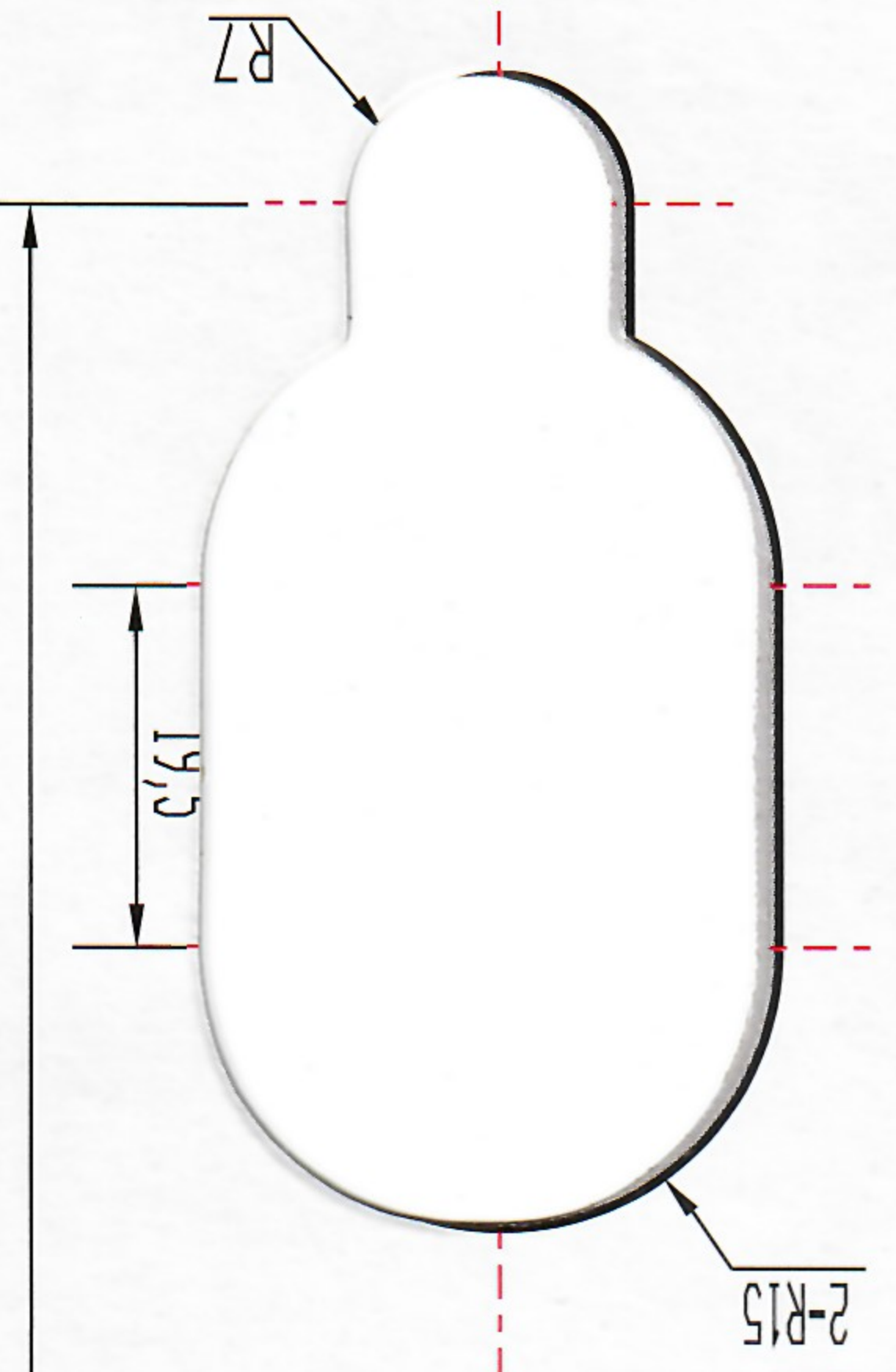
Mortise slot:180x18

57,6

1 meter to ground

88

- 2585 (Depth:45)
- 2885 (Depth:50)
- 3085 (Depth:50)
- 3585 (Depth:60)
- 4085 (Depth:65)
- 4585 (Depth:70)
- 5085 (Depth:70)
- 6085 (Depth:80)
- 6585 (Depth:85)
- 7085 (Depth:90)
- 7585 (Depth:95)



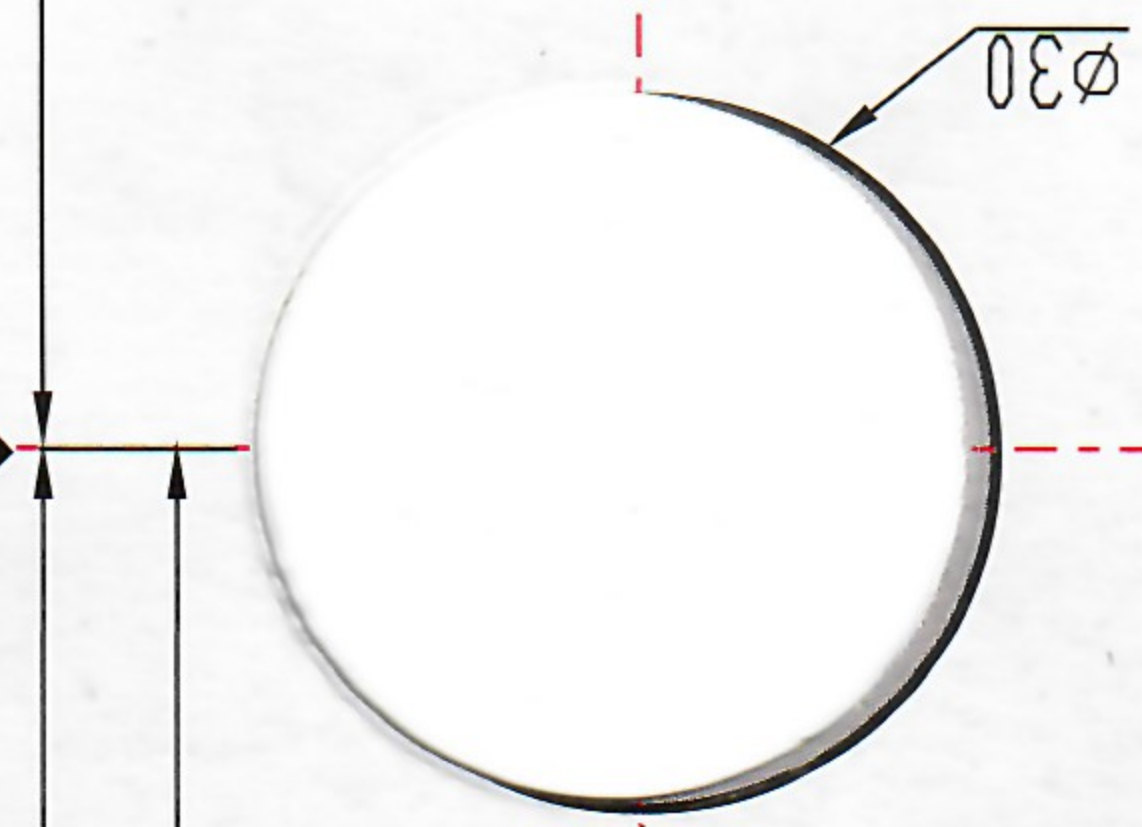
124,9

78

145

10

2-R15



78

145

10

2-R15