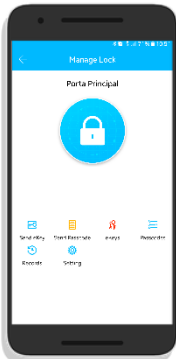
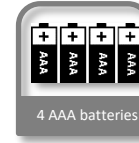




## Smart App Electronic Lock



- Electronic lock programmable by smartphone app.
- Management App compatible with Android or iOS.
- Communication by BLE or WIFI
- Opening by app, code, card or mechanical key.
- Allows the remote opening by smartphone.
- Backlit touch keyboard.
- Easy installation and operation.
- Alarm by sound and LED.
- European standard mortice lock.
- High quality stainless steel and aluminium alloy finishing.



### Smartphone App Management:

App of a simple design for intuitive use that is compatible with Android or iOS, that allows for the local or remote management of access credentials. It can generate several types of codes (permanent, temporary, one-time or cyclic) as well as recording permanent or temporary proximity cards or assign e-keys (access by smartphone). It makes available entry records as well as the battery level of the lock, and the centralized management of all locks.



#### App Key

Abra a porta com o smartphone



#### Código One Time

Envie um código de utilização única do seu smartphone de qualquer lugar



#### Código temporizado

Selecione um intervalo de tempo (dias, horas) para acederem à sua fechadura (convidados, hóspedes)



#### Gestão de utilizadores

Crie novos utilizadores, defina o tipo de código ou remova-os



#### Registo de aberturas

Acompanhe quem e quando utilizou a fechadura



#### BLE 4.0

Baixo consumo de energia, maior duração da bateria



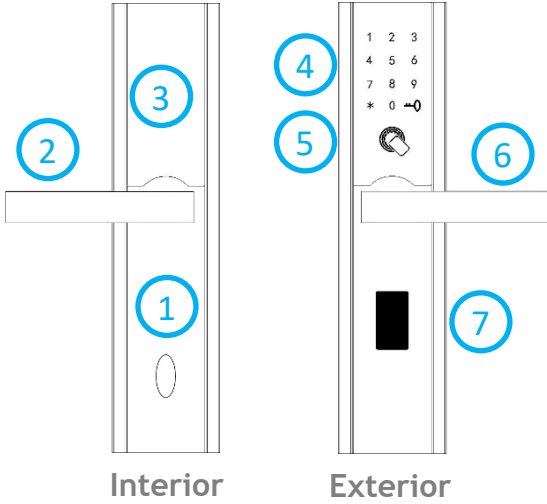


# Triplow W

TW866 BT



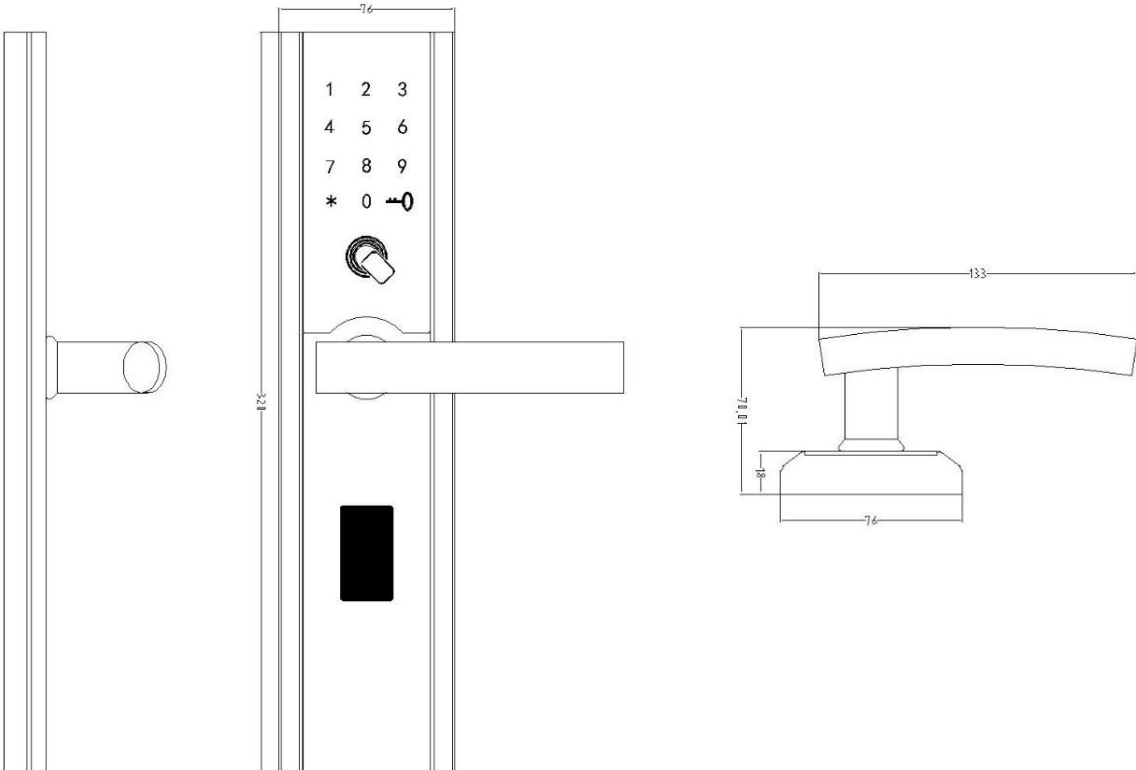
## Demonstration



- 1 - Interior deadbolt knob
- 2 - Interior opening/closing handle
- 3 - Battery compartment
- 4 - Backlit touch keyboard
- 5 - Proximity card reader
- 6 - Exterior opening/closing handle
- 7 - Mechanical key hole

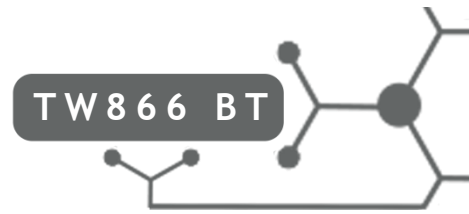


## Dimension

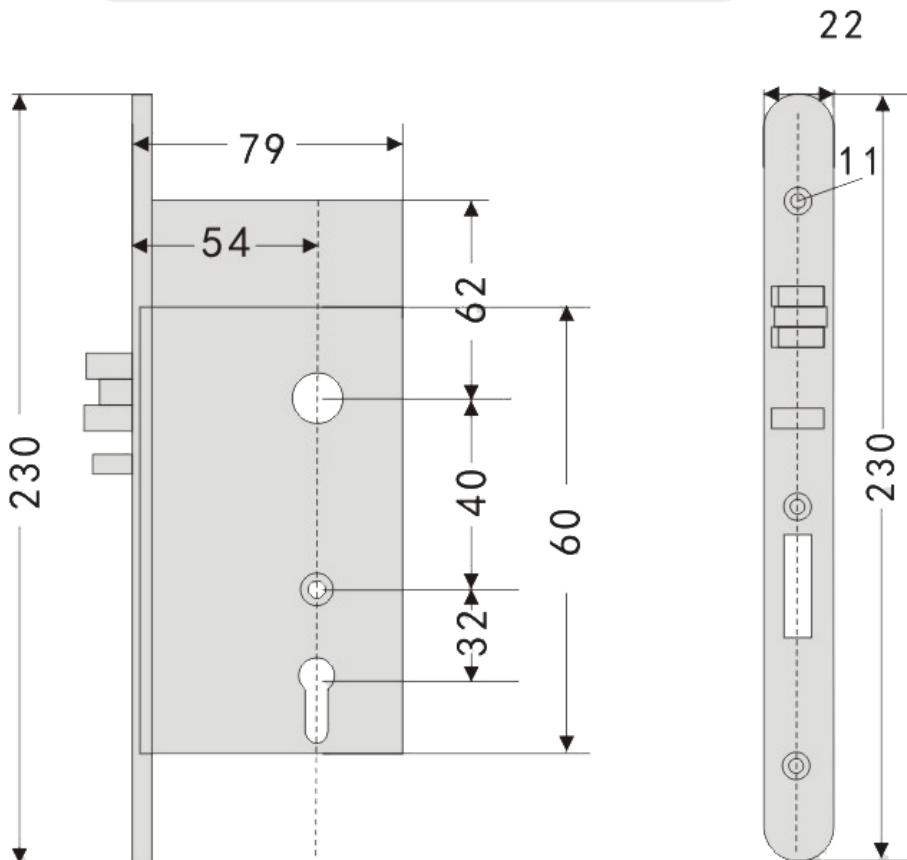




# Triplow W



## European standard lock body





## Functionalities – European standard lock body

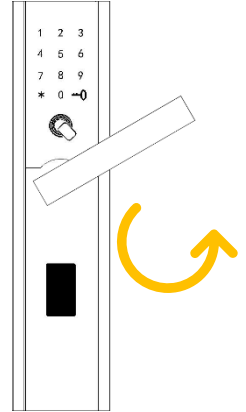
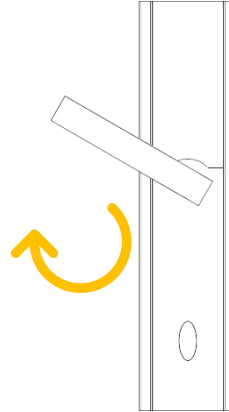
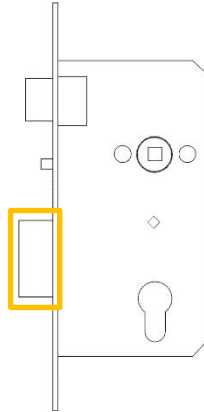
### Description

### Lock

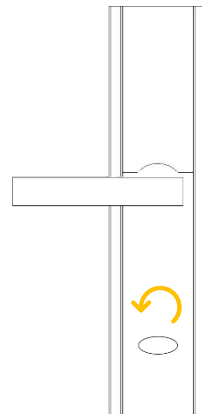
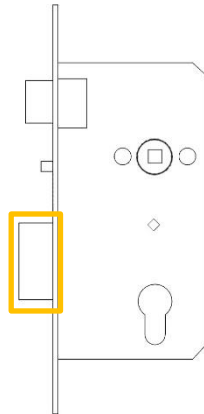
### Interior

### Exterior

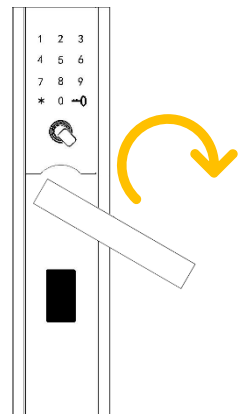
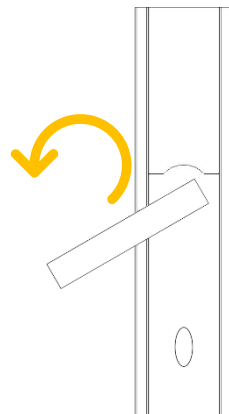
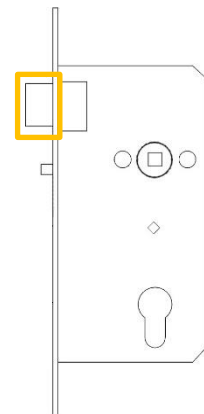
If the interior or exterior handle is turned upwards, even without using the code, access card or app, the lock will release the deadbolt



If the deadbolt knob is turned, the lock will release the deadbolt, similar as turning the handle upwards.

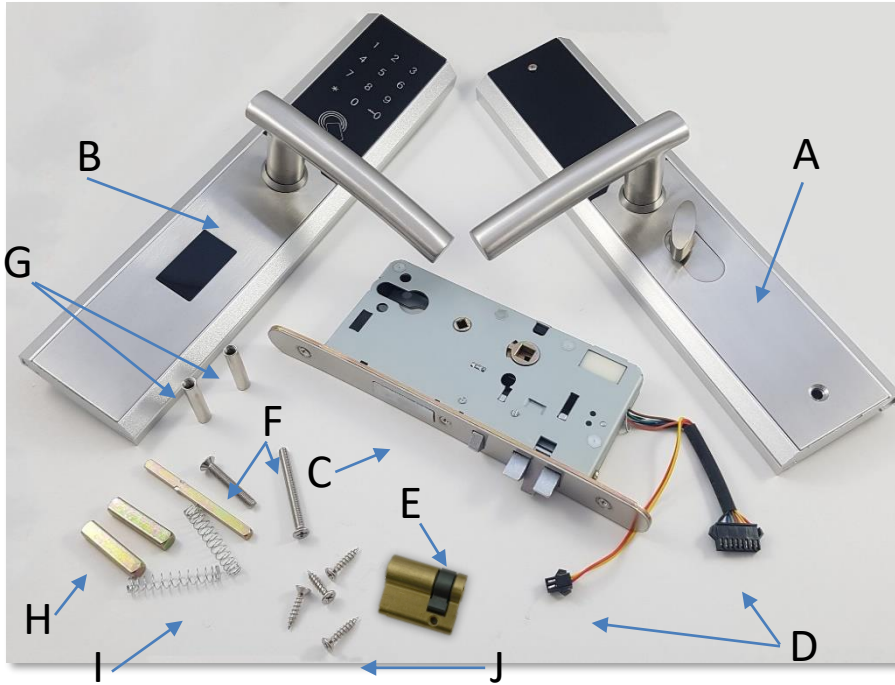


If the interior handle is turned downwards, the lock retracts the latch and the deadbolt, if in used. On the exterior handle, it is necessary to enter the code, use the access card or app to open the lock, otherwise there is no action made.





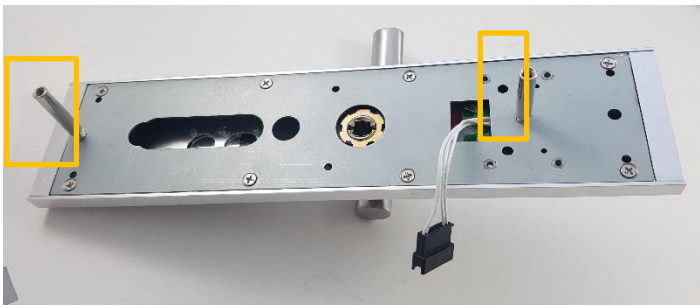
## Components - Installation



- A. Interior metal escutcheon plate
- B. Exterior metal escutcheon plate
- C. European standard mortice lock
- D. Connection plugs
- E. European standard cylinder
- F. Fixing screws (escutcheon plates)
- G. Threaded fixing bolts
- H. Square spindle bars
- I. Handle springs
- J. Fixing screws (lock)

## Installation

### 1. Threaded bolts



Fit threaded bolts in the exterior metal escutcheon plate holes.





## 2. Handle springs



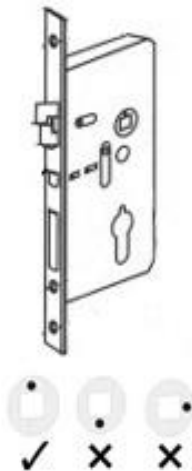
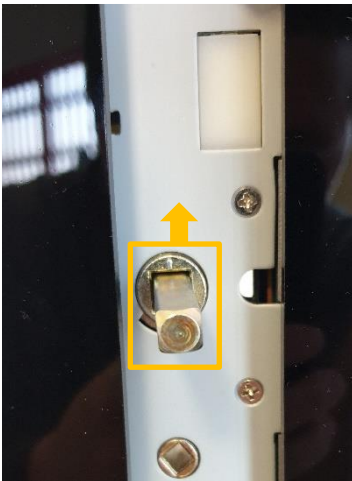
Place springs in the spindle bar holes inside the interior and exterior handles (springs might need to be cut depending on the door thickness).

## 3. Spindle bar



Place the spindle bar (thin one) in the spindle bar hole on the interior plate (the spindle bar has an uneven edge, so the curviest end must be fitted in the lock and the other end in the lock plate).

## 4. Position of the spindle bar hole (arrow)



The hole position of the spindle bar that connects to the exterior handle must be like in the left image, the arrow must point upwards.





## 5. Lock installation on door



1. Cut the holes on the door.

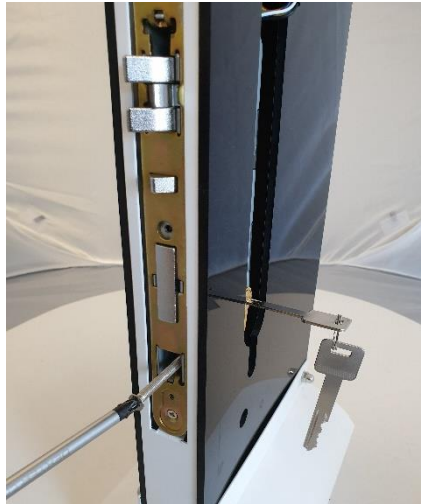


2. Fit in the lock and set in place using the fixing screws.

## 6. European standards cylinder



1. Fit in the cylinder.

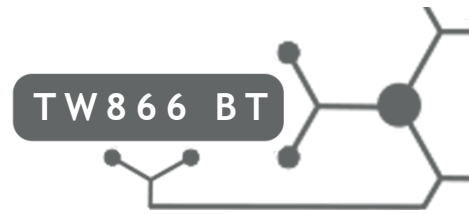


2. Set in place using the screw on the lock's front side.

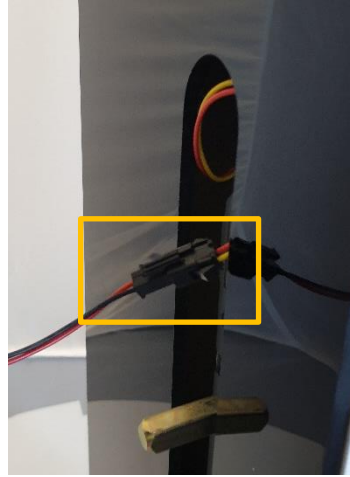
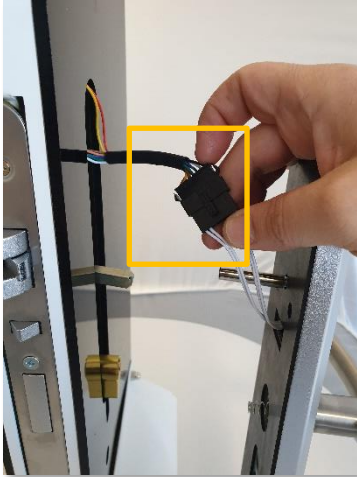


3. Fit in the front plate.





## 7. Connecting the plugs



Connect the power plug (small one) of the interior plate to the signal plug (big one) of the exterior plate.

## 8. Mounting the plates



Exterior plate



Interior plate



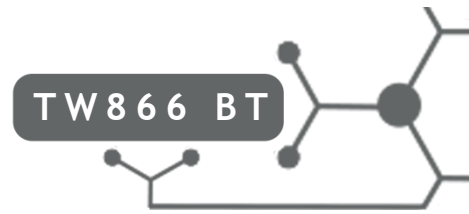
Tighten fixing screws.







# Triplow W



## 9. Battery compartment

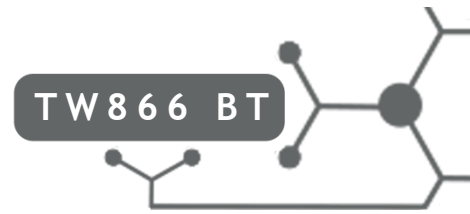


## 10. Finished full installation





# Triplo W



## Warranty

Every product marketed by Triplo W Lda., have a two-year warranty for manufacturing defects. Every equipment sold is checked at our facilities for defects; and if it is unrepairable, it shall be replaced with a new product, according to the corresponding warranty.

For additional information check our conditions of sale at:  
<http://www.triplow.pt/loja/termos-e-condicoes>

