



YLI ELECTRONIC

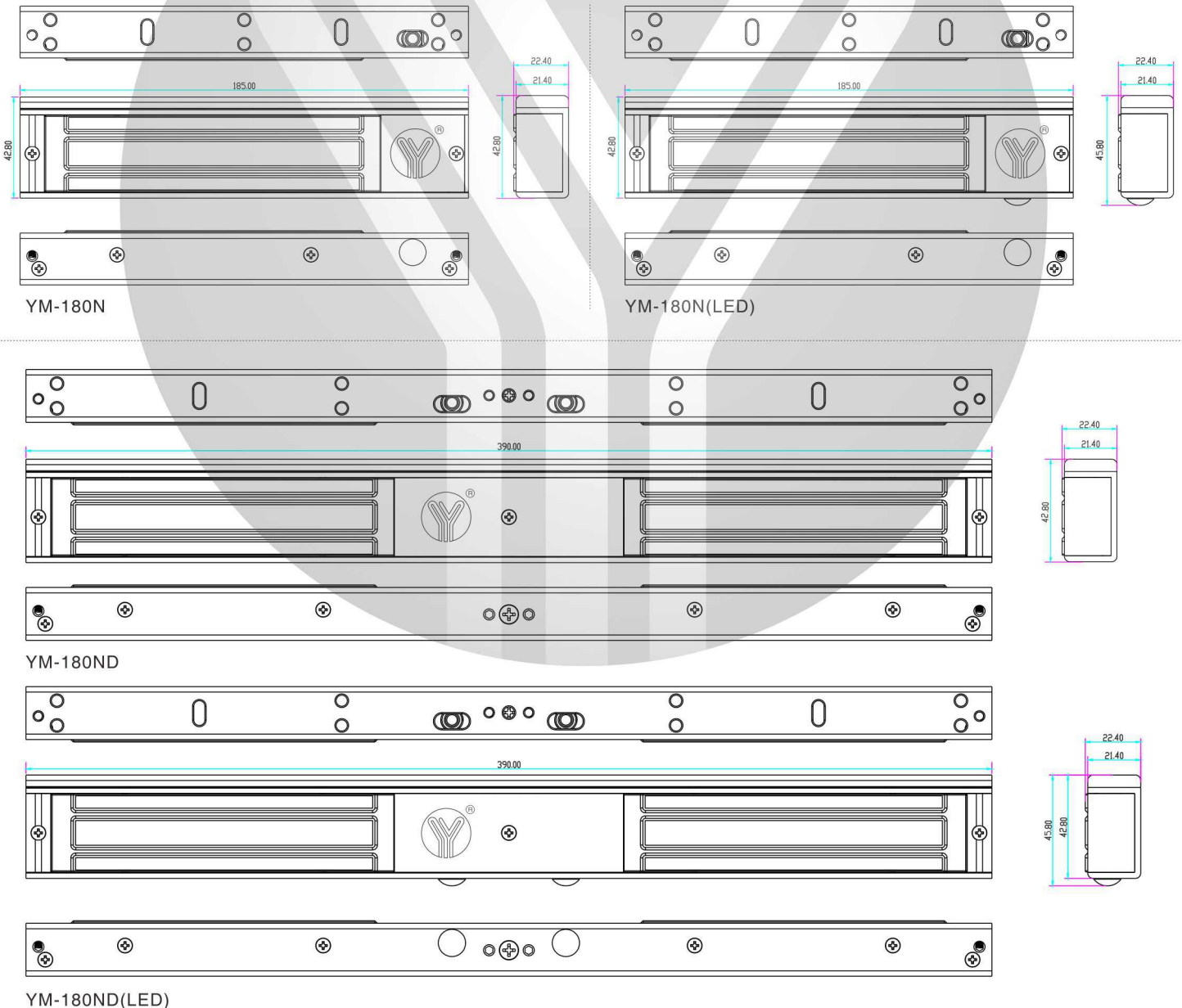
Magnetic Lock with Signal (180kg)



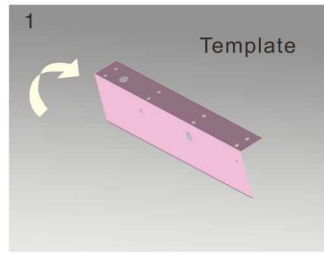
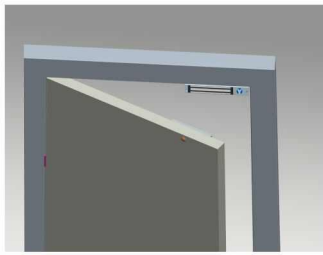
Specification

Model	Size(unit:mm)	Voltage	Current	Holding Force	Lock Signal	LED	Door
YM-180N	185Lx42.8Wx22.4H	DC12V(Default); DC24V(Order)	12V/400mA±10% 24V/200mA±10%	180kg(350Lbs)	No	No	Single door
YM-180N(LED)	185Lx42.8Wx22.4H	DC12V(Default); DC24V(Order)	12V/400mA±10% 24V/200mA±10%	180kg(350Lbs)	NO/NC/COM	Red shows locked Green shows unlocked	Single door
YM-180ND	390Lx42.8Wx22.4H	DC12V(Default); DC24V(Order)	12V/400mA±10% 24V/200mA±10%	180kgx2(350Lbsx2)	No	No	Double door
YM-180ND(LED)	390Lx42.8Wx22.4H	DC12V(Default); DC24V(Order)	12V/400mA±10% 24V/200mA±10%	180kgx2(350Lbsx2)	NO/NC/COM	Red shows locked Green shows unlocked	Double door

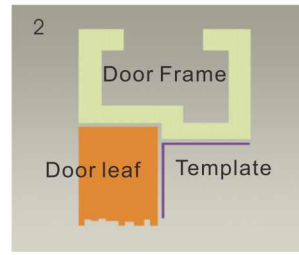
Diagram(unit:mm)



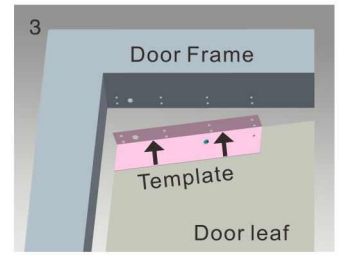
Installation



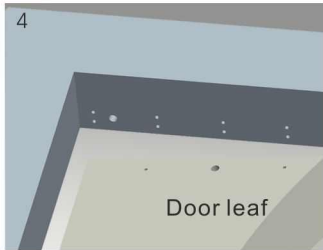
1 Fold the plate to 90° .



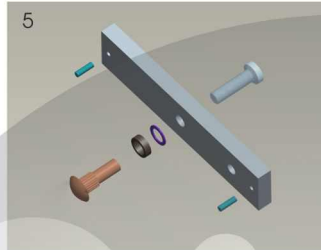
2 Close the door first, then place the upper side of template on door frame, while adjust the left side next to the door leaf.



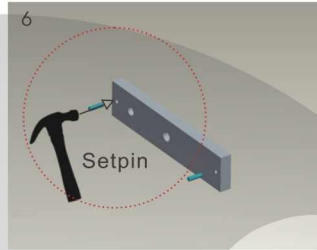
3 Mark screw positions of armature plate and magnetic lock on door leaf and door frame respectively.



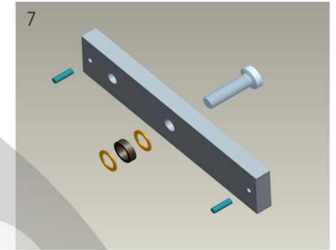
4 Drill holes based on the marked positions.



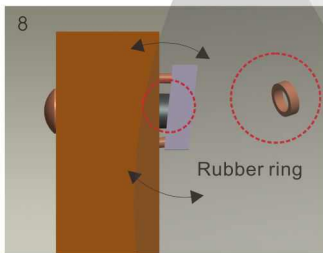
5 Make a combination based on the picture.



6 Strike the pin into the armature plate slightly (to avoid movement).



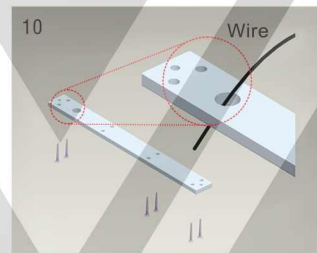
7 Make a combination based on the picture (add washer accordingly). The rubber ring must be added.



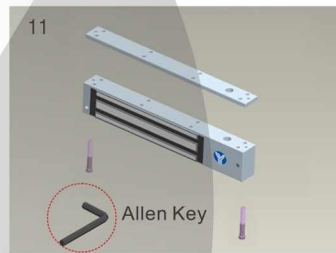
8 Place the rubber ring between armature plate and door leaf.



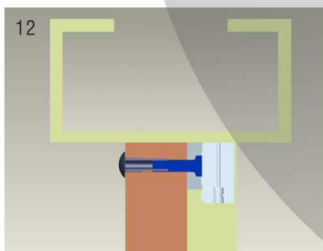
9 Use Allen key to remove the mounting plate from lock body.



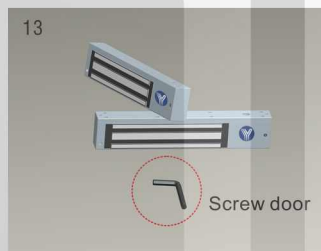
10 Fix the mounting plate on the door frame according to the holes drilled earlier.



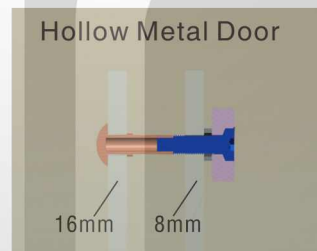
11 Use Allen key to screw the lock body on the mounting plate.



12 Close the door to test holding force. The angle between armature plate and magnetic lock can be adjusted by adding or reducing washers.

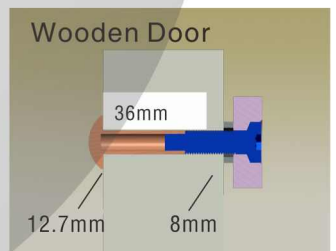


13 After all the appropriate procedures, the holding force can be maximized. Finally, fix the tamper screw.



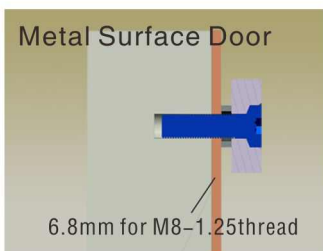
Hollow Metal Door

Drill a hole
Inside: Diameter is 8mm
Outside: Diameter is 16mm



Wooden Door

Drill a hole
Inside: Diameter is 8mm
Outside: Diameter is 12.7mm



Metal Surface Door

6.8mm for M8-1.25thread

Inside: Drill a hole diameter is 8mm folding the plastic straight pin

⚠ Notice:

Thickness of Door Leaf:

350LBS: 44mm 600LBS: 50mm 800LBS: 48mm 1200LBS: 46mm

- A. The screw of armature plate should not be fixed too tight. Proper elasticity should be guaranteed for the rubber ring so that the armature plate can adjust itself to the appropriate position.
- B. Check the jumper's position before connecting. Figure out it represents 12VDC or 24VDC.

Bracket Installation

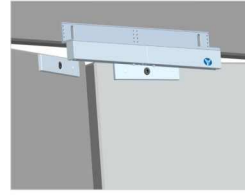
Different brackets are available according to different types of doors. For example, narrow door, frameless glass door and inward opening door.

L Bracket

When the door frame thickness is less than 42mm, L bracket is needed.



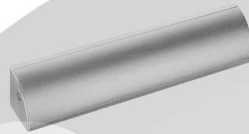
Single Door Magnetic Lock Bracket



Double Door Magnetic Lock Bracket

LC Bracket

LC Bracket one-piece design, wires are mortised, no damage on wires



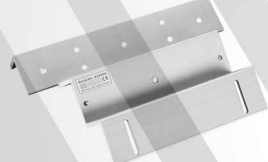
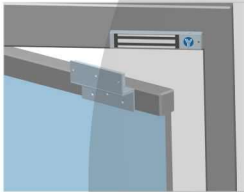
Single Door Magnetic Lock Bracket



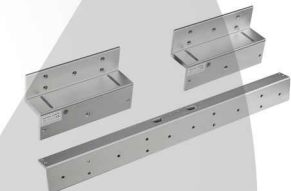
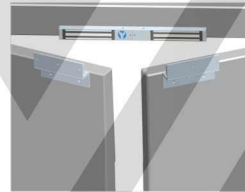
Double Door Magnetic Lock Bracket

ZL Bracket

If install a bracket on inward opening door, ZL bracket is needed



Single Door Magnetic Lock Bracket



Double Door Magnetic Lock Bracket

ZLC Bracket

Hidden-line Design of bracket for single door magnetic lock, one-piece design, durable, easy installation



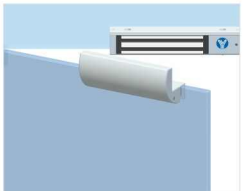
Single Door Magnetic Lock Bracket



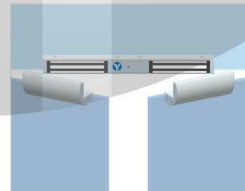
Double Door Magnetic Lock Bracket

GZ Bracket

One-piece design, durable & professional design, easy installation, suitable for 10-15mm frameless glass door



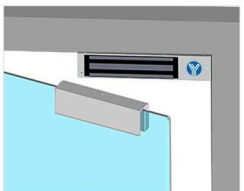
Single Door Magnetic Lock Bracket



Double Door Magnetic Lock Bracket

U Bracket

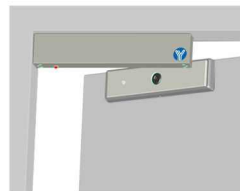
If door leaf is glass, need U bracket to be used with lock (suitable for 10-12mm glass door)



Single Door Magnetic Lock Bracket

Installation of Armature Plate

If door leaf is too thick, need to choose I bracket



Double Door Magnetic Lock Bracket

Circuit Board Diagram

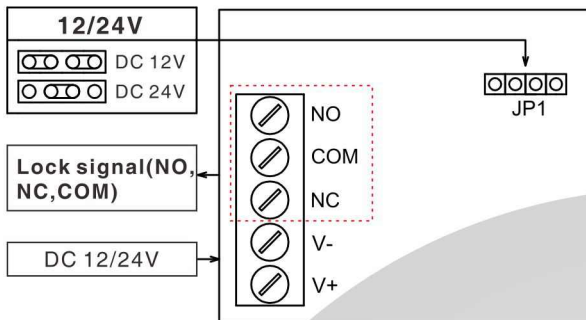
A. 12VDC Input:

Connect the positive(+)lead from a 12VDC power source to V +.
Connect the ground(-)lead from a 12VDC power source to V -.
Check jumper for 12 VDC operation.

B. 24VDC Input:

Connect the positive(+)lead from a 24VDC power source to V +.
Connect the ground(-)lead from a 24VDC power source to V -.
Check jumper for 24 VDC operation.

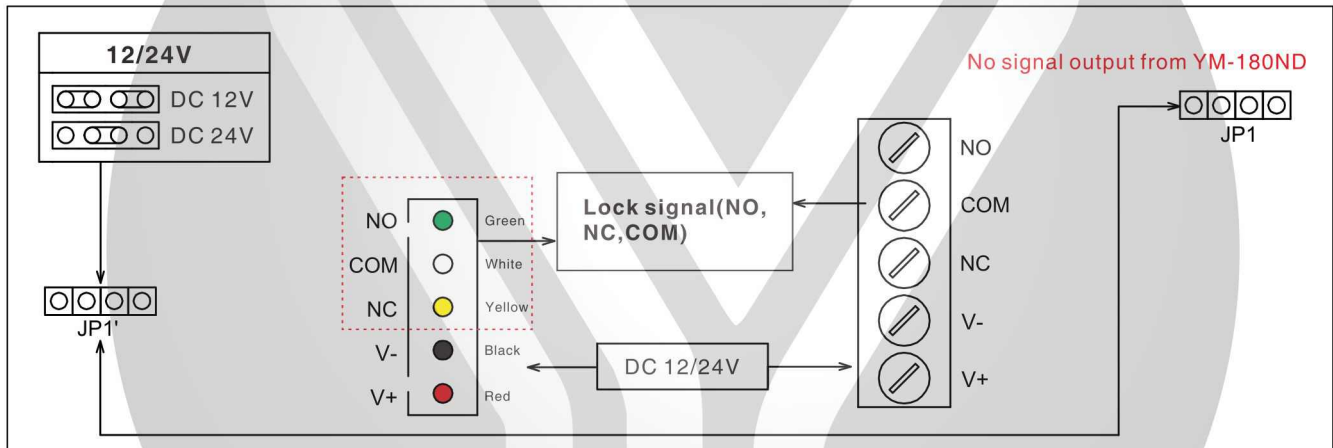
Wiring Instruction of Single Door Magnetic Lock



No signal output from YM-180N

Wiring Instruction of Double Door Magnetic Lock

Connection: green wire or white plug, except the models without LED indicator and signal output; only when it detects that double doors have been locked, there will be normal signal output.



No signal output from YM-180ND

Wire Connection

