



DATA SHEET

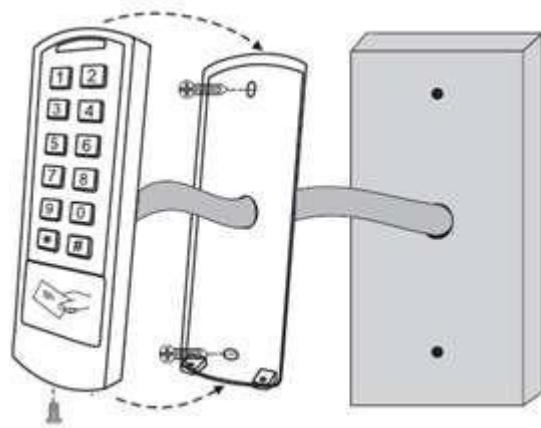
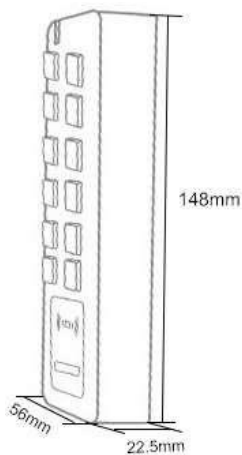
RFID Card Reader with Water-Proof Numeric Keypad



TW-5X

- Power Supply: 12 ~ 28 V AC/DC
- Sturdy metal structure
- Capacity: 600 users
- Access by card and code
- Water-proof, IP66
- Allowed operating temperature: -40 °C to 60 °C
- Type of card: In 125KHz | Mifare 13,56MHz
- Weight: 150g
- Size: 148 x 56 x 22,5 mm
- Several operating modes:
 - Standalone
 - Reader
 - Along with another TW-5X, with interlock function.
 - Toggle mode: Card is used 1 time and the door opens, card is used once again and door closes.

Dimension and Mounting





Setting and Operating Mode

Enter programming mode:

Enter programming mode	* + (Programming password) + # NOTE: The predefined programming password is 123456
Exit programming mode	Press *

Modify the programming password

Instruction	Programming code
1. Enter programming mode	* 123456 #
2. Modify programming code	0 (New password) # (Repeat new password) #
3. Exit programming mode	*

Add cards with automatic ID assignment

Instruction	Programming code
1. Enter programming mode	* (Programming password) #
2. Add card (with automatic ID)	1 (Read the card) #
3. Exit programming mode	*





Add card by card number

Instruction	Programming code
1. Enter programming mode	* (Programming password) #
2. Add card according to number	1 (Card number) #
3. Exit programming mode	*

Add card with a specific ID

Instruction	Programming code
1. Enter programming mode	* (Programming password) #
2. Add a user	1 (ID from 1 a 597) # (Use the card) #
3. Exit programming mode	*

Add code automatic ID assignation

Instruction	Programming code
1. Enter programming mode	* (Programming password) #
2. Add user	1 (code) # (Code from 4 to 6 digits)
3. Exit programming mode	*

Add code with specific ID

Instruction	Programming code
1. Enter programming mode	* (Programming password) #
2. Add user	1 (ID from 1 to 597) # (code) #
3. Exit programming mode	*

Delete code users

Instruction	Programming code
1. Enter programming mode	* (Programming password) #
2. Delete card	2 (code to be deleted) #
3. Exit programming mode	*





Delete code with specific ID

Instruction	Programming code
1. Enter programming mode	* (Programming password) #
2. Delete user	2 (ID from code to be deleted) #
3. Exit programming mode	*

Delete card by using card

Instruction	Programming code
1. Enter programming mode	* (Programming password) #
2. Delete card	2 (Card to be deleted) #
3. Exit programming mode	*

Delete card with specific ID

Instruction	Programming code
1. Enter programming mode	* (Programming password) #
2. Delete user	2 (ID to be deleted) #
3. Exit programming mode	*

Delete card by card number

Instruction	Programming code
1. Enter programming mode	* (Programming password) #
2. Delete card	2 (Card number) #
3. Exit programming mode	*





Delete all cards and codes

Instruction	Programming codes
1. Enter programming mode	* (Programming password) #
2. Delete card	2 (Programming password) #
3. Exit programming mode	*

Timer

Instruction	Programming code
1. Enter programming mode	* (Programming password) #
	Timer: 3 (1 to 99 seconds) #
2. Timer or Toggle mode	Toggle mode (Use card 1 time, the door opens. use card again and door closes): 30 #
3. Exit programming mode	*

Access mode

Instruction	Programming code
1. Enter programming mode	* (Programming password) #
2. Access mode	<ul style="list-style-type: none"> - Card only: 40 # - Card + Password: 41 # - Card or Password: 42 # (factory configuration) - Access by using several cards or codes (to open, use several cards or codes): 43 (2~9) #
3. Exit programming mode	*





Visual and sound settings

Instruction	Programming code	
1. Enter programming mode	* (Programming password) #	
2. Activate/Deactivate key sound and upper led	Deactivate Sound : 70 #	Deactivate Led : 72#
	Activate Sound : 71#	Activate Led : 73#
3. Keypad light	Deactivate: 74 #	Activate: 75 #
3. Exit programming mode	*	

Other functions

Interlock access mode (Two TW-5X connected to each other)

Instruction	Programming code
1. Enter programming mode	* (Programming password) #
2. Access mode	Interlock Off: 90 #
	Interlock ON: 91 #
3. Exit programming mode	*

ATTENTION: A specific connection diagram is needed to use the interlock function.

RESET

1. Disconnect the power supply.
2. Joint yellow wire with black wire (or if there is an output button, press that button).
3. Connect the power supply. With wires already joined or by pressing the button until hearing 2 beeps and that the led is in yellow.
4. In case there is an ADD and DELETE card, immediately use the ADD card and then the DELETE card (in that order).
5. Led is steady in red.

ATTENTION: User data will not be deleted.

