



TRIPLO W
Criamos Segurança

User Manual
Installation Guide

TW-899

Electronic lock with fingerprint, code, card and
APP for glass doors



ATTENTION:

Read the manual carefully before installation and keep it for future use.
Store mechanical keys in a safe place so that, in case of breakdown or
emergency, you can open the door mechanically.
Pay attention to the battery level so that you can replace batteries in a
timely manner.

[www .triplow. pt](http://www.triplow.pt)

Technical Specifications

MODEL	TW-899
TYPES OF OPENING	APP, Code, Proximity Card Fingerprint, Mechanical Key (SOS)
Door thickness	Glass doors: 8-12mm/glass door with edge: 30-120mm
BATTERIES/VOLTAGE	4 x 1.5V AAA batteries (not included)
Measurements	303 x 43 x 25 mm
Programmability	Fingerprints: 100 / Cards: 200 / Passcode: 150 users

Measurements



Reset to factory settings

Press the RESET button for 5 seconds, enter the code 0000# after the lock comes out "Please enter the initialization password".

Change address



Switching to the right port:

Type on the keyboard:

123456#56#1#, the keyboard will be up and the fingerprint sensor will be down (factory default position)

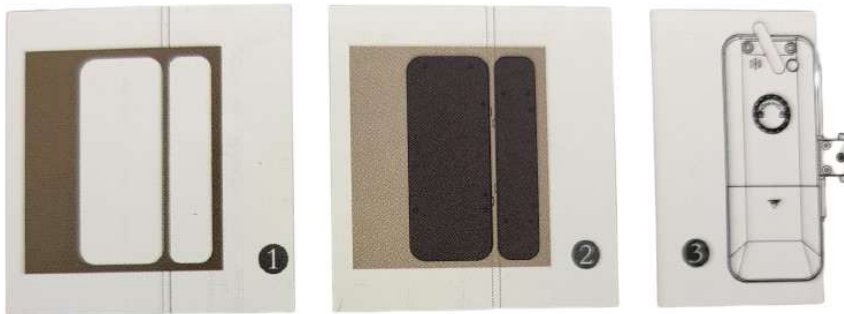
Shift to left port:

Type on the keyboard:

123456#56#2#, the fingerprint sensor will be up and the keyboard will be down

Installation on rimless glass doors

Thickness: 8-12mm



1. Clean the glass and glue a Paper Jam
Positioned horizontally
Inside the door.

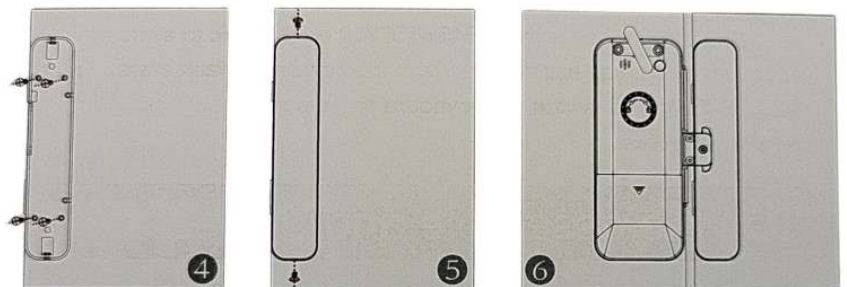
2. Remove the adhesive paper from the mounting plate and glue it according to the position of the paper jam. The buckle legs should fold down the side of the glass door.

3. Push the main latch along the side of the glass, remove the battery cover, twist the top strip of the cover and tighten 4 set screws.

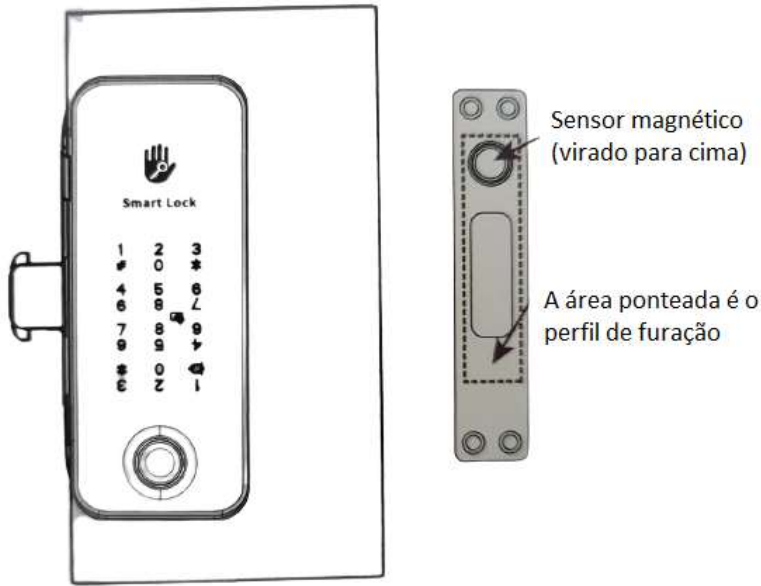
4. Remove the back housing (top and bottom screws) from the auxiliary lock, push it through the side of the window :

5. Use the manual button to block, confirm that both Parts of the lock are aligned, then back to install the back cover and Squeeze both tightly screws (top and bottom).

6. Install the battery and close the cover to complete the installation



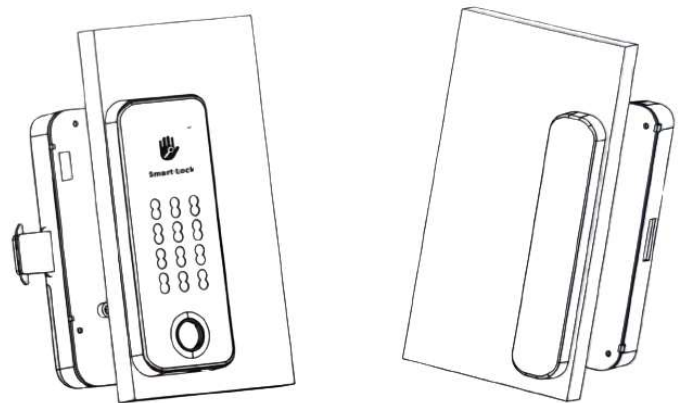
Installation on single-leaf doors



1. Install the lock, close the door, and mark the position of the mirror
 2. Drill for mirror and
Inserted side straps
- Keep in mind that the orientation of the magnet should be consistent with the lock; Illustrative images show a stand on top

Installation on framed doors

1. Install the outer locking plate and drill the hole
2. After threading the locking wires around the inside of the frame, attach the lock plate to the frame with screws
3. Connect the wires to the inside of the lock and the outside of the lock to the plate.
4. Install the inside of the lock and screw it to the rim.



Important Note:

For automatic locks with a magnetic sensor, it is not recommended to activate the automatic lock in the TTLock app. The magnetic sensor that they already have incorporated is the one that will give you the closing order. With auto-closing active, the lock will close at the time determined by the administrator, but if the door is not yet in the closed position, the lock will not allow the latch position to be changed and will remain open.

User Manual Standalone Version

Note: To work it **MUST** be in its factory state, not paired with the ATTLock APP.

1. Restore to factory settings:
Press and hold the reset button on the lock (about 5 seconds) until you hear "didi", put 000#. The lock will be restored to factory settings and all codes and cards will be erased.
(Default code: 123456)
2. Set admin code:
With the lock in the default state, type:
*12#123456# → enter admin code # → repeat the same admin code #
3. Change your admin code:
*12# → enter the original admin code # → enter the new admin code # → repeat the new admin code #
4. Add user code:
*80# → enter the admin code # → enter the new code to add # → repeat the new code #
5. Change the user code:
*10# → original code # → new code # → repeat the new code #
6. Delete user codes:
*71# → admin code #
Deletes all user codes (admin code is not deleted). Use this feature carefully.
7. Add IC card:
*80# → enter the administrator code # → bring the IC card closer to the reading area.
8. Remove IC cards:
*69# → admin code #
Remove all IC cards (use this feature carefully).

TT Lock Application Programming

The lock installation is complete!

To pair and configure your lock, use the QR code or link to access the TTLock manual.



www.triplow.pt/TTLOCK



Google Play



App Store