



TRIPLO W
Chamamos Segurança!

Installation Guide
User Manual

CODE 100-B

Electronic Tubular Code Lock



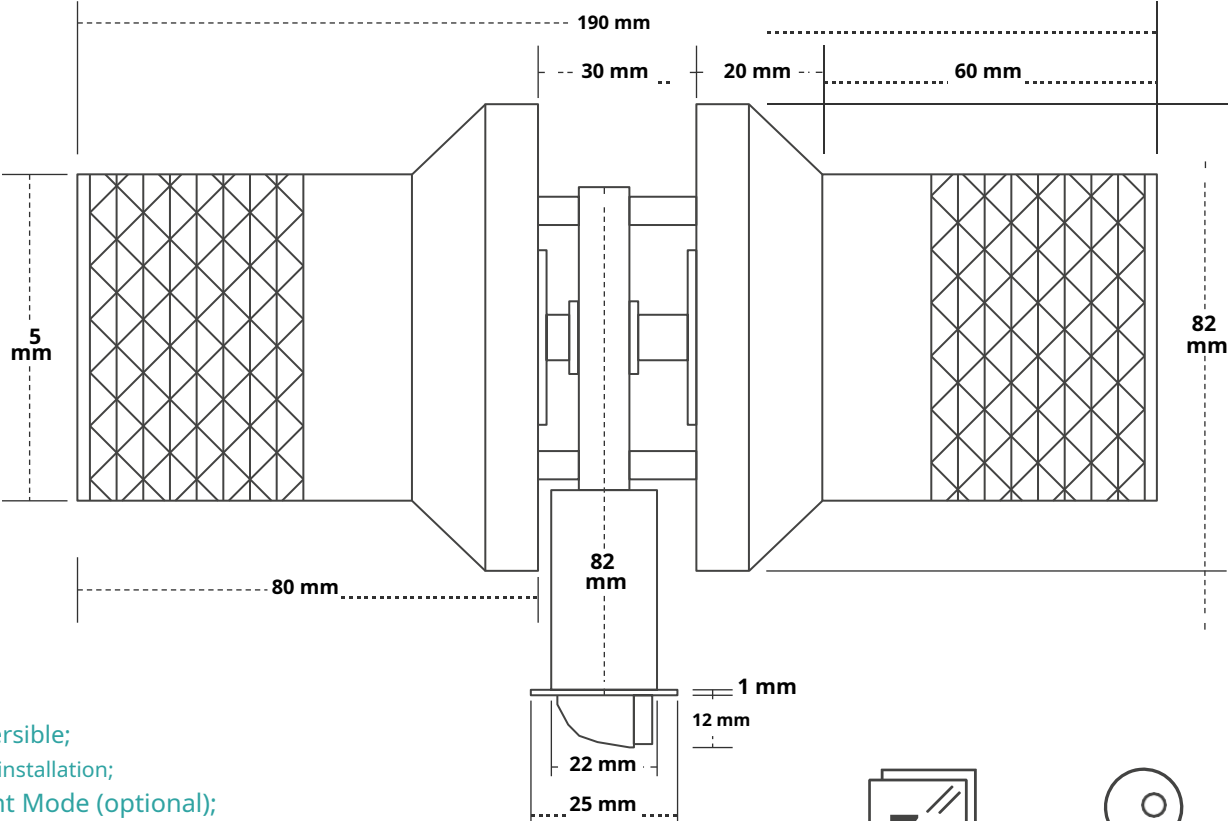
ATTENTION:

Leia o manual com atenção antes da instalação e guarde-o para uso futuro.

Guarde as chaves mecânicas num local seguro para, em caso de avaria ou emergência, poder abrir a porta mecanicamente.

Tenha atenção ao nível de bateria para poder efectuar a substituição das pilhas atempadamente.

www.triplow.pt



- Reversible;
- Easy installation;
- Silent Mode (optional);
- Diamond pattern cylinders;
- Illuminated keyboard;
- Codes up to 15 digits;
- Encryption / Code camouflage (anti-peeping);
- Passage mode - single digit opening;
- Low battery alert - the lock emits a continuous “Beep”, followed by a single “Beep”;
- Battery life ~180 days, with an average of 20 uses per day. We recommend that, after installation and programming, the batteries be changed after 2 weeks;

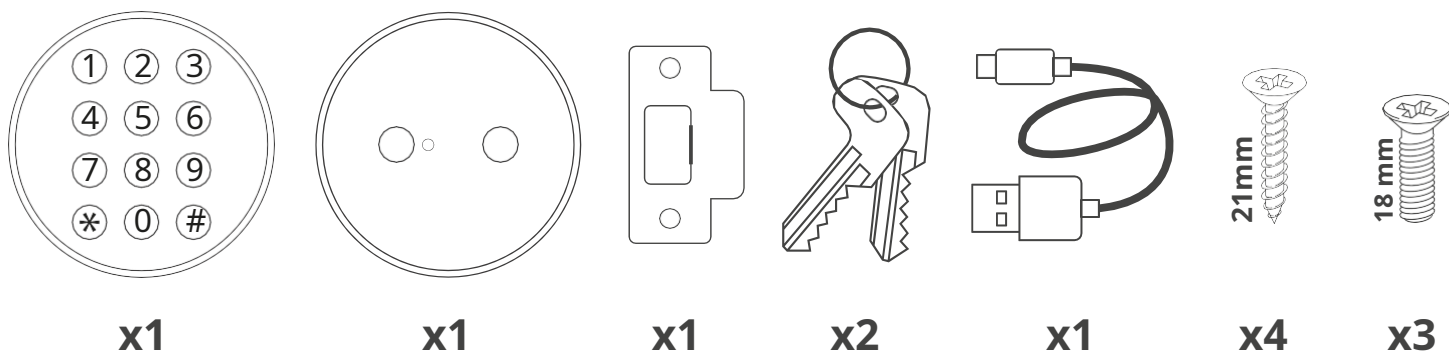


Technical Specifications

MODEL	CODE 100-B
MATERIAL	Zinc Alloy
DIMENSIONS (mm)	190 x 82 mm
WEIGHT (KG)	1.2 kg
TYPES OF OPENING	Code, Mechanical Key
COLOR	Black
BATTERIES/VOLTAGE	4 x AA 1.5 V Batteries(nthethe includediof)
DOOR THICKNESS (mm)	35 - 50 mm
USER CAPACITY	10 (1 Administrator, 8 Normal Users, 1 Guest)
SOS CHARGING	SOS Micro USB DC6V Input
IP PROTECTION	IP 65
OPENING TIME	Approximately 2.5 seconds

Package Contents

2



Lock Components

A: Outer Cylinder

B: Inner Cylinder

C: Latch

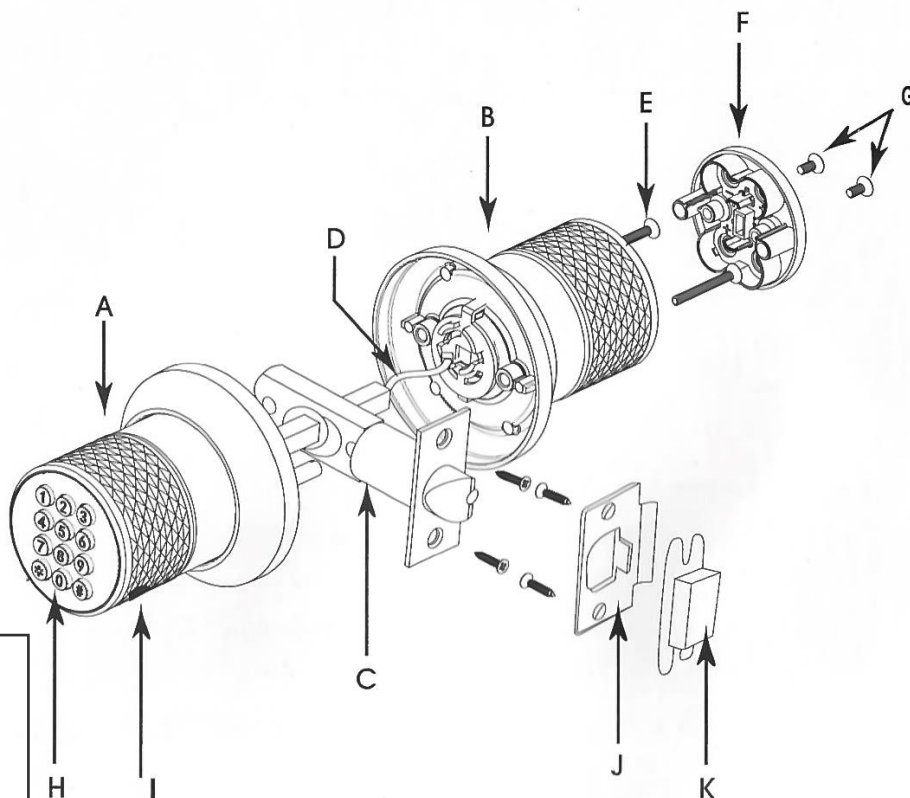
D: Power Cable E: Screw

F: Battery cover G: Screws

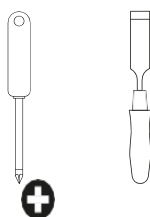
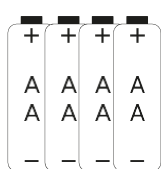
H: Keyboard

I: Micro-USB SOS input J: Deadbolt

K: Counter-lock box

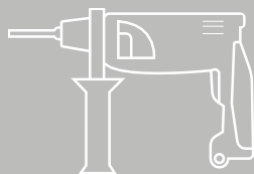


Accessories not included

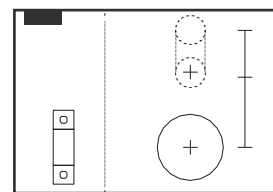


Drilling

To make the appropriate holes for the lock, please use the template sheet drilling included in the manual



x1



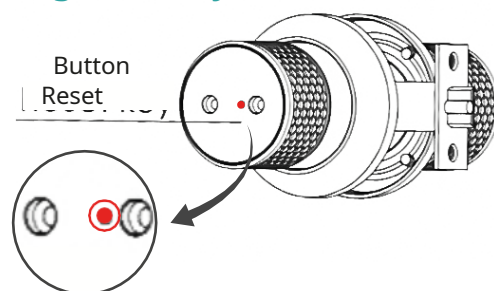
Insert the batteries and test, checking that the lock is working correctly.



RESET OF THE HARD CLOSURE



BEFORE to start the assembly and with the lock connected you must do the **Manual reset** of the same. To do so, simply **press** the button **RESET** continuously during **5 seconds**, until the lock emits 3 consecutive "beeps". The process of reset is complete, the master code is back to "0123".



All codes begin with the user number. Pressing the "#" key confirms the code entry.
(e.g.: if the code is "123" and it is from user 3, you will have to type "3123#" on the keypad)

Administrator ID Number: 0 User ID

Number: 1~8 Passage Mode Code ID

Number: 9

In order to program the lock, you must create a master code - administrator code.

The number corresponding to the administrator is 0 and, therefore, the code to be defined must start with 0, with the remaining digits being able to go from 0 to 9, in any order you want and with a maximum of 15 digits.

Change the master code

The factory default code is "0123".

- To type "0123" followed by "#" to unlock the lock;
- Wait until the sound stops - the blue light on the keyboard stays on;
- Enter a new master code that starts with "0" and press the "*" button to confirm;

If the process has been done correctly, the lock will emit 2 sounds, indicating that
the new code has been saved.

Normal Codes and Pass Code

User codes can be a combination of the digits 0 through 9 and have a maximum of 15 digits. Only the master code can start with the digit "0," and only the guest code can start with the digit "9."

Create and assign codes

- Enter the master code and press the "#" key;
- Wait until the sound stops - the blue light on the keyboard stays on;
- Enter a new code that starts with the user number of the sequence and press the "*" to save (Ex.: the first code to be saved is for user 1, so it will have to start with the number 1; the second code is for user 2 and will have to start with the number 2 and so on, following the numerical sequence up to user 8). Repeat this process for the visitor code as well.

If the process has been done correctly, the lock will emit 2 sounds, indicating that
the codes were saved.

ATTENTION: the code recording process must be done with the keyboard light on.
turned on. If the light turns off, you will have to repeat the steps.

Change User Codes

In addition to the Administrator, each user has permission to change their own code. For security reasons, code changes should be made with the door open.

Create and assign codes

- Enter the code you want to change and press the “#” key;
- After the lock stops making sounds and the blue light on the keypad is still on, enter the new code, making sure that it starts with the digit corresponding to the user number to which the changed code is associated (e.g.: if the code being changed belongs to user 2, the new code must start with the digit 2);

If the process has been done correctly, the lock will emit 2 sounds, indicating that the new code has been saved.

To delete ALL codes for all users

- Enter the master code and press the “#” key;
- After the lock stops making sounds and the blue light on the keypad is still on, press the “0” key five times and then the “*” key.

If the process has been done correctly, the lock will emit 2 sounds, indicating that the codes have been erased and the lock can only be operated with the master code.

To delete a code for a specific user

- Enter the master code and press the “#” key;
- After the lock stops emitting sounds and with the blue light on the keypad still on, enter “0000 + user number” and press the “*” key (e.g.: to delete user 1’s code, enter “00001*”).

If the process has been done correctly, the lock will emit several sounds.

Passage Mode - unlock with just one digit

The lock has the ability to activate passage mode. This allows anyone to unlock the lock by pressing a single key without needing to create a user code.

Activate Passage Mode

- Enter the passcode that starts with the number 9 and press the “#” key (e.g.: “9+code+#”;
- After the lock stops making sounds and the blue light on the keypad is still on, quickly press the keys “*+” followed by “#”;

If the process has been done correctly, the lock will emit 2 sounds, indicating that pass-through mode is active.

Disable Passage Mode

- Press a random key to “wake up” the lock;
- After the lock stops making sounds and the blue light on the keypad is still on, quickly press the keys “*+” followed by “#”;

If the process has been done correctly, the lock will emit 2 sounds, indicating that pass-through mode is disabled.

Code Encryption

As a security measure, the lock allows you to “hide” the correct code among other numbers, up to a maximum of 9 digits.

- Enter the ID number of the code you want to insert;
- Enter a random sequence of numbers to confuse anyone watching;
- Enter the correct code and press the “#” key

Example:

The user is 8 and his code is “83557373”. Enter the User ID number “8” + random sequence - 564778458 + correct code - 3557373 + #

Enable/Disable Silent Mode

- Press the “*” key for 5 seconds to activate silent mode - the lock will be silent;
- Press the “*” key for 5 seconds to deactivate silent mode - the lock will make sound;

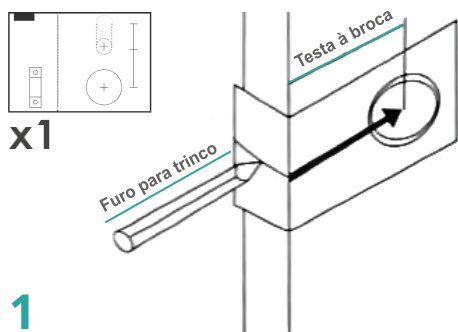
Simplified Instructions

Administrator ID Number: 0 User ID

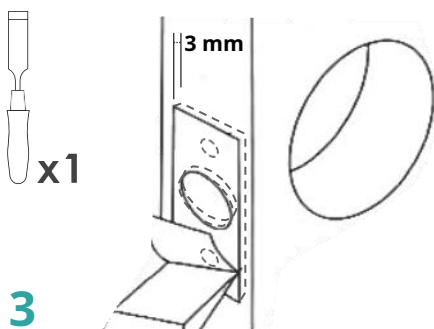
Number: 1~8 Passage Mode Code ID

Number: 9

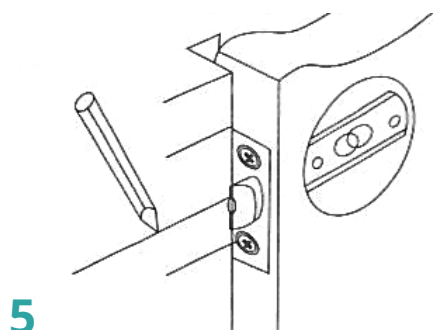
FUNCTION	KEYBOARD OPERATION
Change Master Code	Predefined Master Code: 0123 0 (123) * 0 (New Master Code) * Code Length: max. 15 digits
Add Code	0 (Master Code) # (User ID Number 1~9) (User Code) * Code Length: max. 15 digits
Change Code	(User ID Number 0~9) (User Code) # (User ID Number 0~9) (New Code) * Code Length: max. 15 digits
Delete Codes Users	Delete ALL codes for all users (except Administrator) 0 (Master Code) # 00000 * Delete specific user code 0 (Master Code) # 0000 * (User ID number 0~8 to delete)
Enable / Disable Passage Mode	Enable Passage Mode 9 (Pass Code) # * # (User ID Number 1~8) (User Code) * Disable Passage Mode 9 (Pass Code) # * # (User ID Number 1~8) (User Code) *



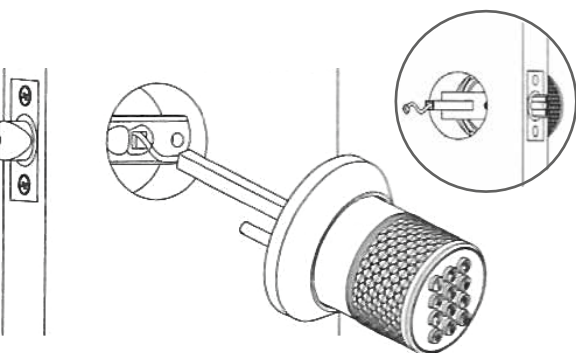
1 Using the supplied drilling template sheet, fold along the indicated line and mark 54mm diameter holes on each side of the door for the cylinders and then mark a 25mm diameter hole on the side of the door for the latch;



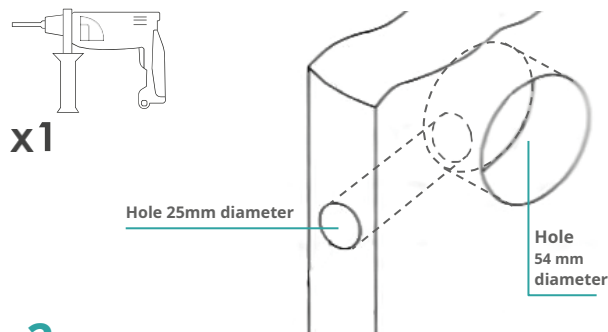
3 Mark the measurement of the latch mirror and then, using the chisel, cut a groove with the marked measurements and a depth of 3 mm. Also drill 3 mm diameter holes for the latch end screws;



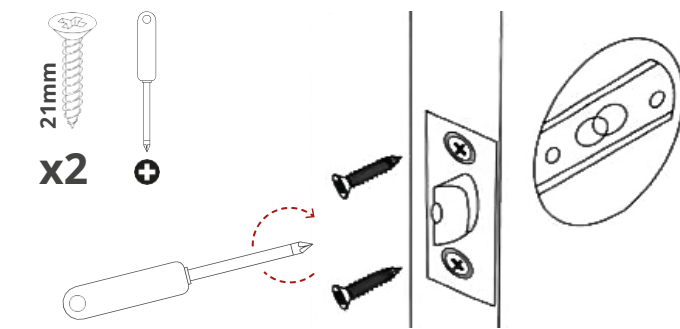
5 Close the door and mark the center of the latch, as well as the distance from the side of the door to the center of the latch. Mark the holes for the lock bolt: a 25mm wide and 15mm deep hole + two 3mm diameter holes for the lock bolts.



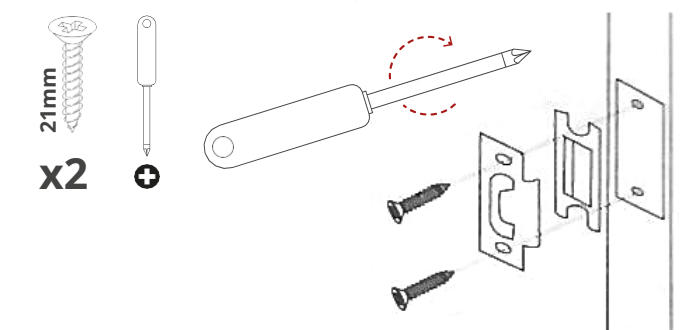
7 Assemble the cylinders. Place the first handle exterior, passing the power cable through the hole in the court;



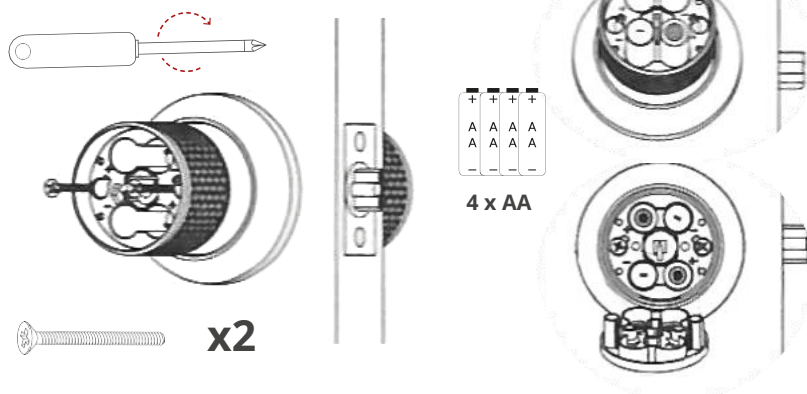
2 Drill the holes for the cylinders and the latch, making sure that these intersect correctly;



4 Place the screws provided to secure the latch;



6 Place the screws provided to secure the counter lock;

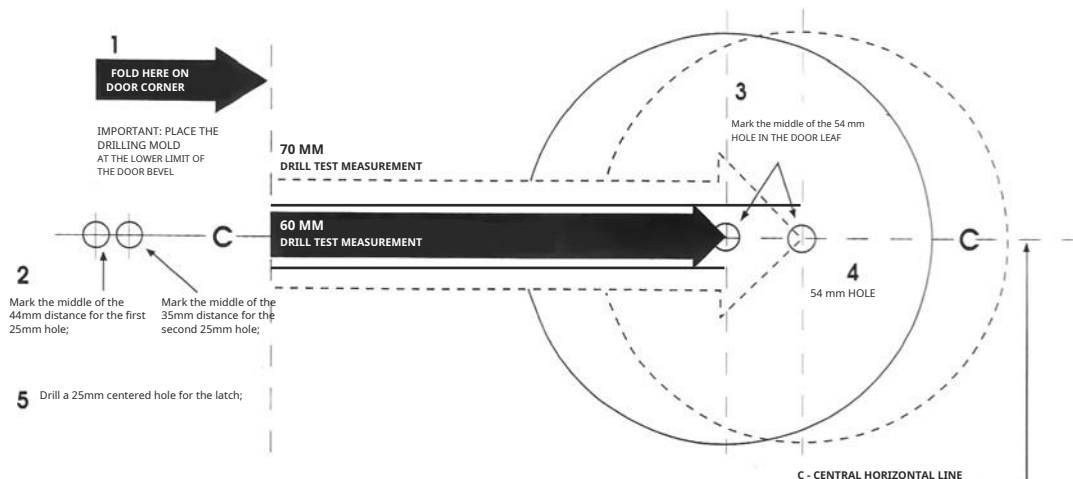
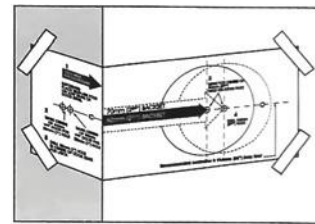


8 Mount the handle inside, securing it to the outside with screws;

9 Connect the power cord, insert the batteries and install the battery protection cover.

Drilling Model

Please follow the instructions, making sure all measurements are correct and centered.



Recommended height for installing the lock, 914mm from the floor

vídeo de instalação
CODE 100-B
Fechadura Electrónica de Código Tubular



TRIPLO W
Criamos Segurança!

Thank you for purchasing our product!