



TRIPLO W
Criamos Segurança

TW1 1 A

Installation Guide User
Manual

Electronic lock with
smartphone management



iOS



Installation video

TW11A

Electronic lock

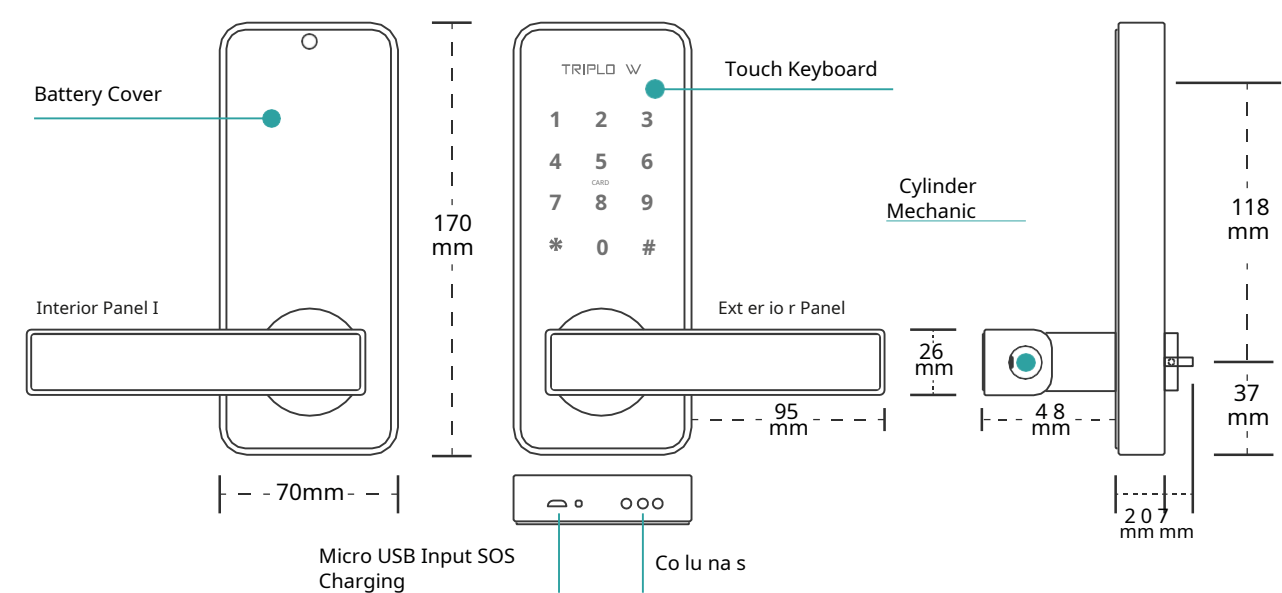
ATTENTION:

Leia o manual com atenção antes da instalação e guarde-o para uso futuro.
Guarde as chaves mecânicas num local seguro para, em caso de avaria ou emergência, poder abrir a porta mecanicamente.

Tenha atenção ao nível de bateria para poder efectuar a substituição das pilhas atempadamente.



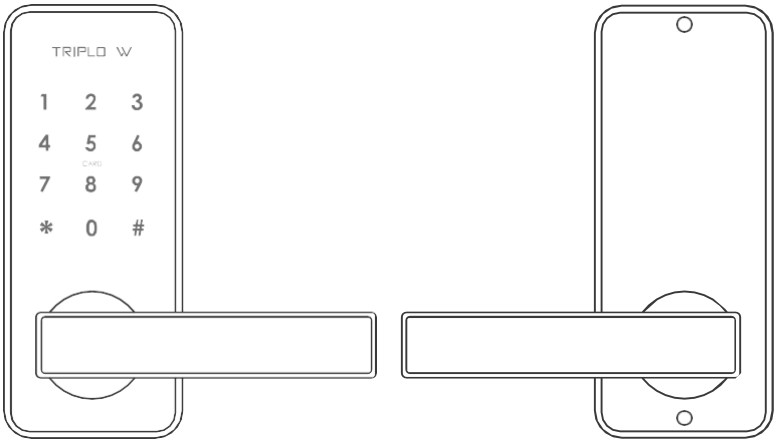
www.triplo.w.pt



Technical specifications

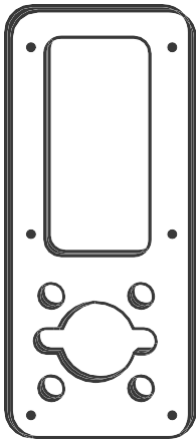


| | |
|-------------------------------------|---|
| MODEL | TW11A |
| MATERIAL | Zinc League |
| PANELS (INTERIOR AND EXTERIOR) (mm) | 170x70x20mm |
| WEIGHT (KG) | 1.5 kg |
| DEGREE OF PROTECTION | IP55 |
| TYPES OF OPENING | Bluetooth, Proximity Card, APP, Code, Mechanical Key |
| AVAILABLE COLORS | Silver/Black |
| TYPES OF DOOR | Aluminum/PVC/Wood/Metal Doors Sliding Doors |
| BATTERIES/VOLTAGE | 4xAA Batteries(not included) |
| DOOR THICKNESS (mm) | 30- 80mm |
| DATA CAPACITY | > 150 Codes > 300 Cards |
| WORKING TEMPERATURE (°C) | - 25° +60° |
| LOW VOLTAGE ALARM (V) | Lower 4.5V |
| LOADING | MicroUSB input |

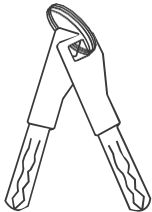


x1

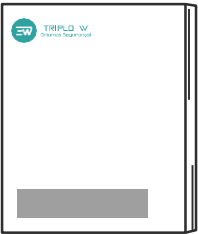
x1



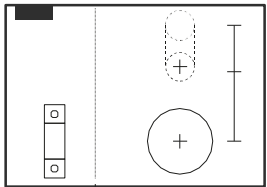
x2



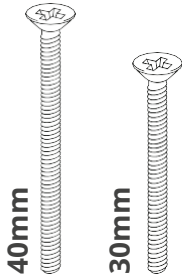
x2



x1



x1



40mm

x2

30mm

x2



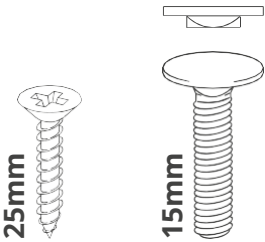
30mm

x2



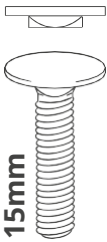
30mm

x1



25mm

x8



15mm

x2



10mm

x4



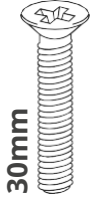
5mm

x4



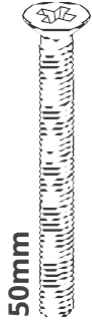
20mm

x1



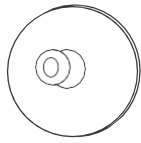
30mm

x1



50mm

x1



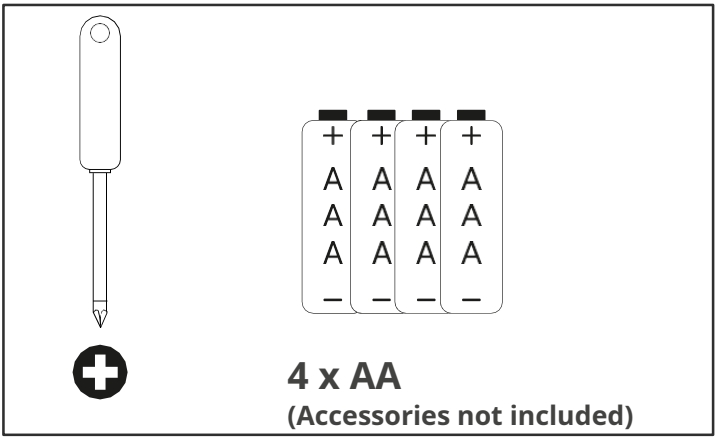
x1



x1

85mm

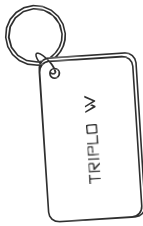
x1



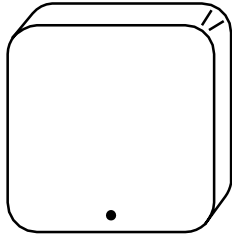
4 x AA

(Accessories not included)

NOT INCLUDED
(optional)



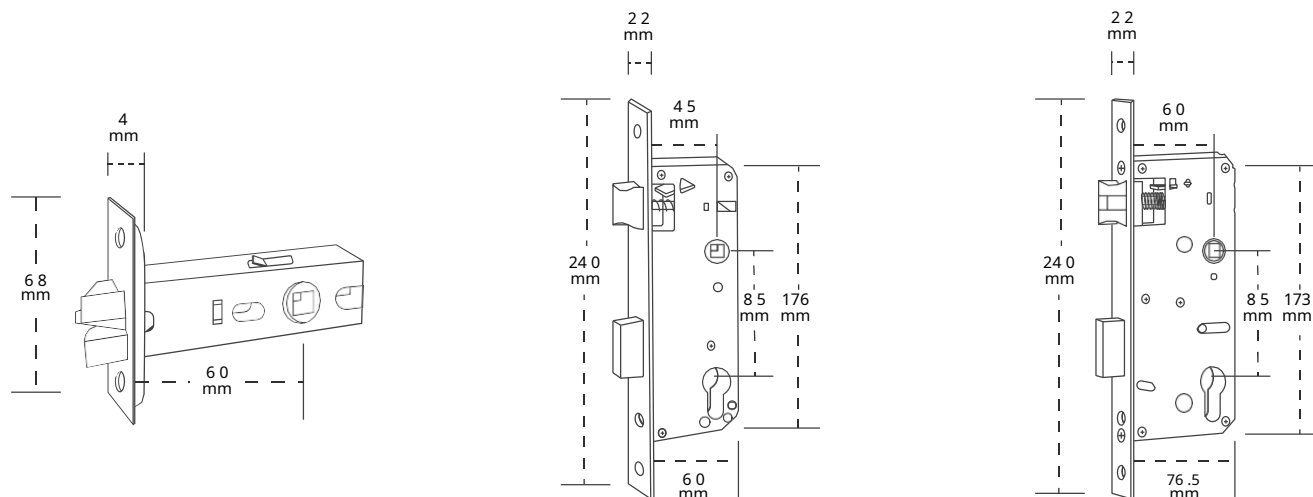
TAG



TW - GATE

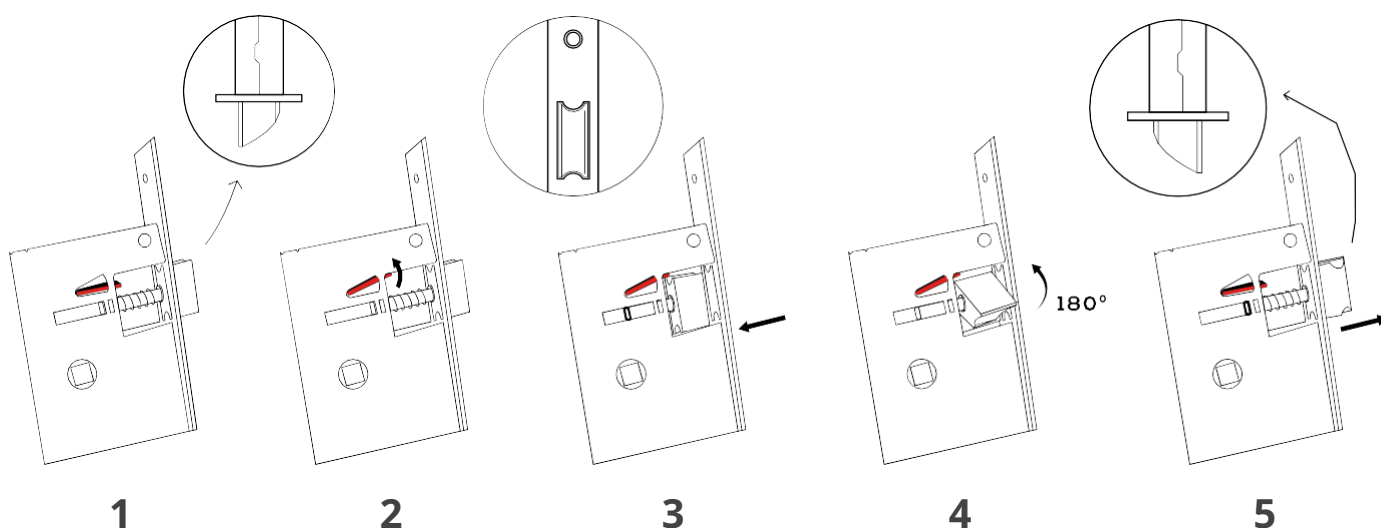
The position of the square axis varies depending on the model of box/mechanical lock chosen. You should take this into account when assembling it.

Types of Box / Mechanical Lock



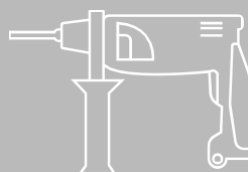
| 60/70 | 45 x 85 | 60 x 85 |
|------------------------|------------------------|--------------|
| Wooden and Metal Doors | Wooden and Metal Doors | Wooden Doors |

I nvertero Trinco

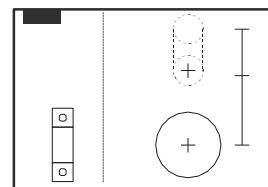



Drilling

To make the holes suitable for the lock,
please use the diagram sheet
drilling included in the box.



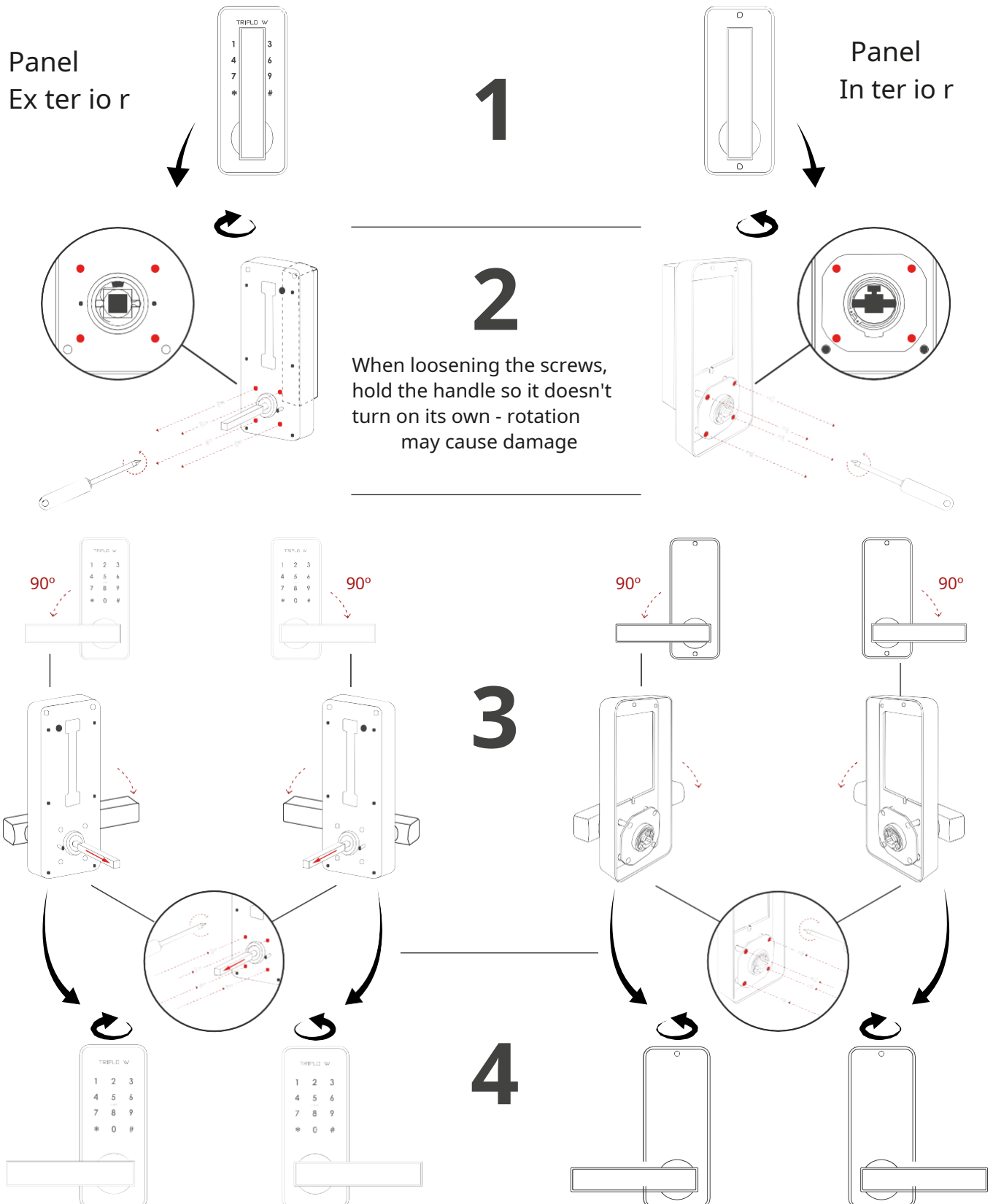
x1



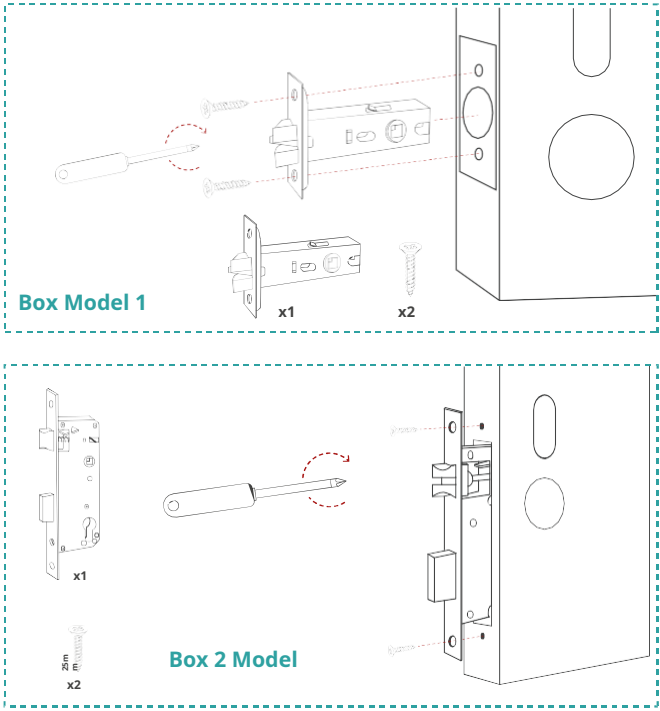
The square axis arrow  must be turned to the side opposite to the handle, otherwise the lock will not open electronically.

Trim Simple

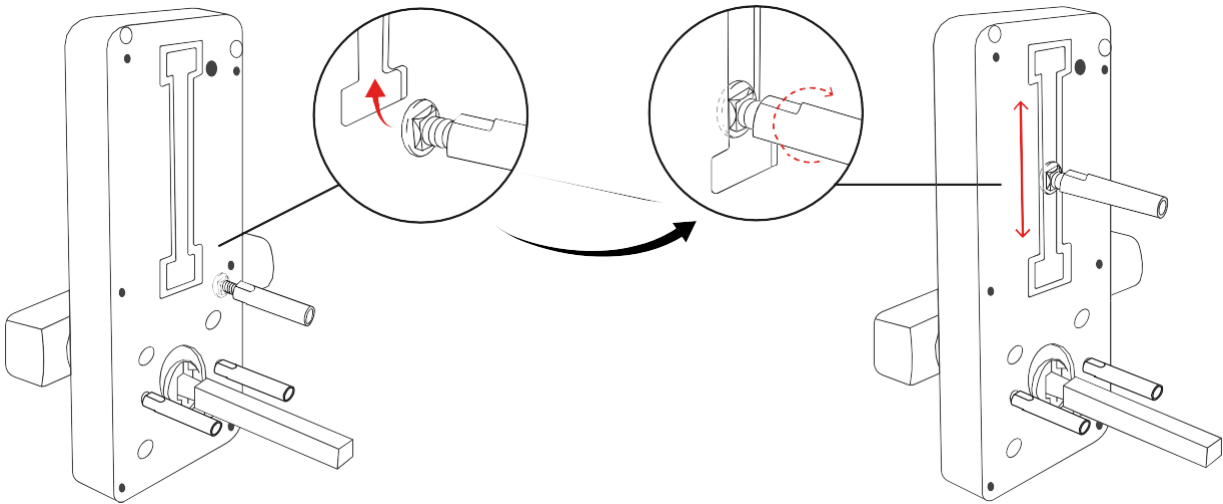
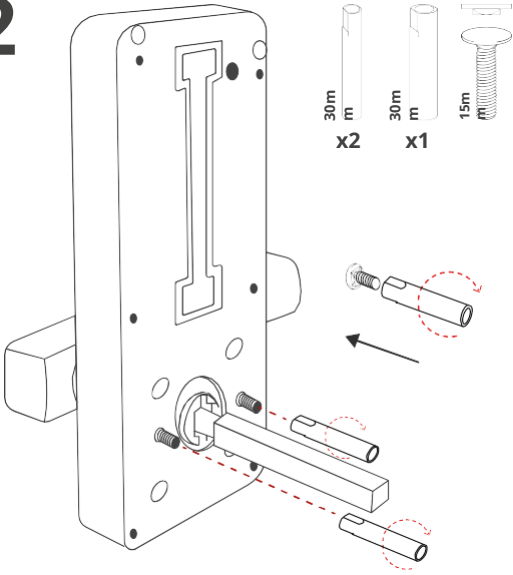
ATTENTION: The handle contains electrical connections to the lock body. Turn only 90° (from vertical to horizontal position) to the desired side or it will damage components.



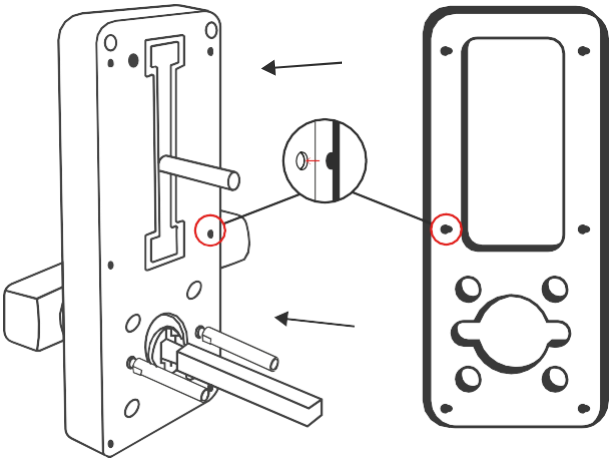
1



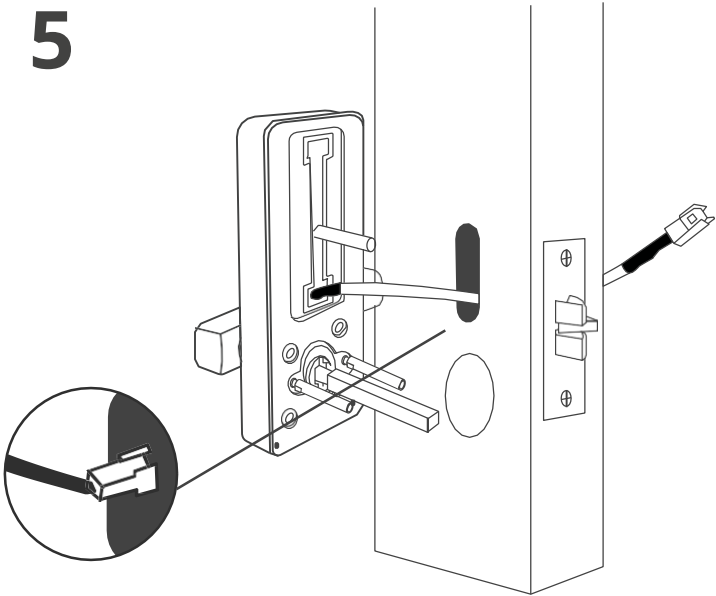
2



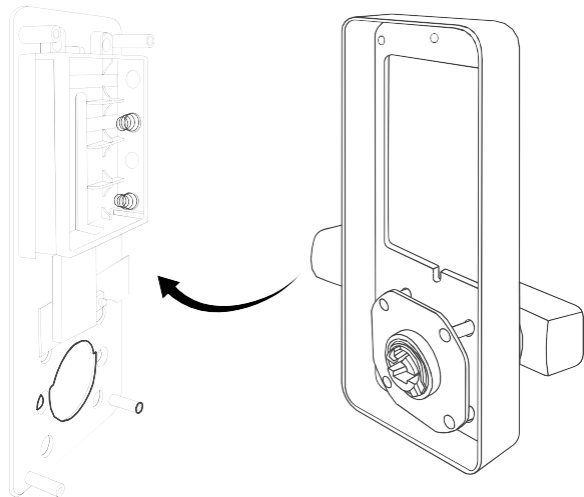
4



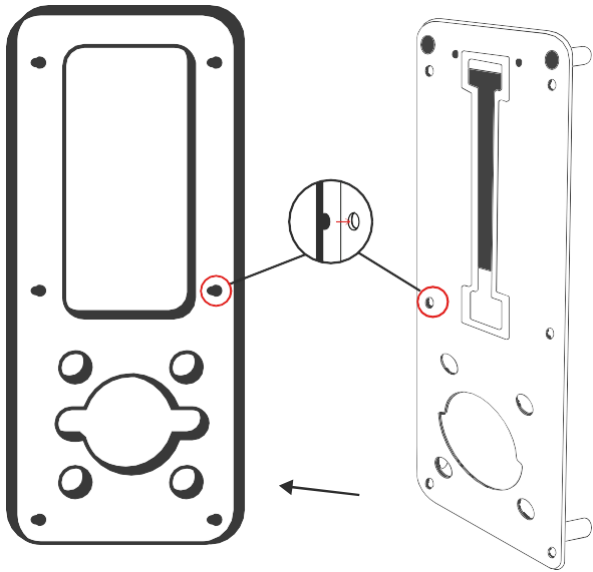
5



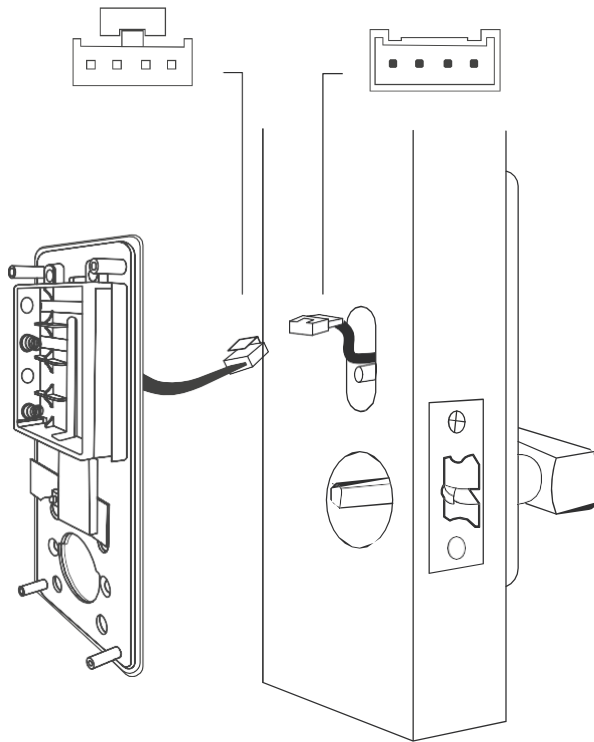
6



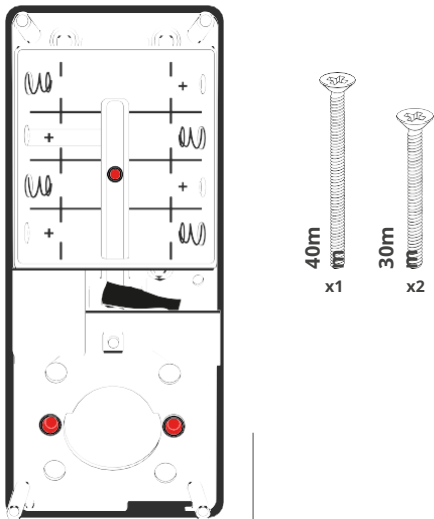
x1 7



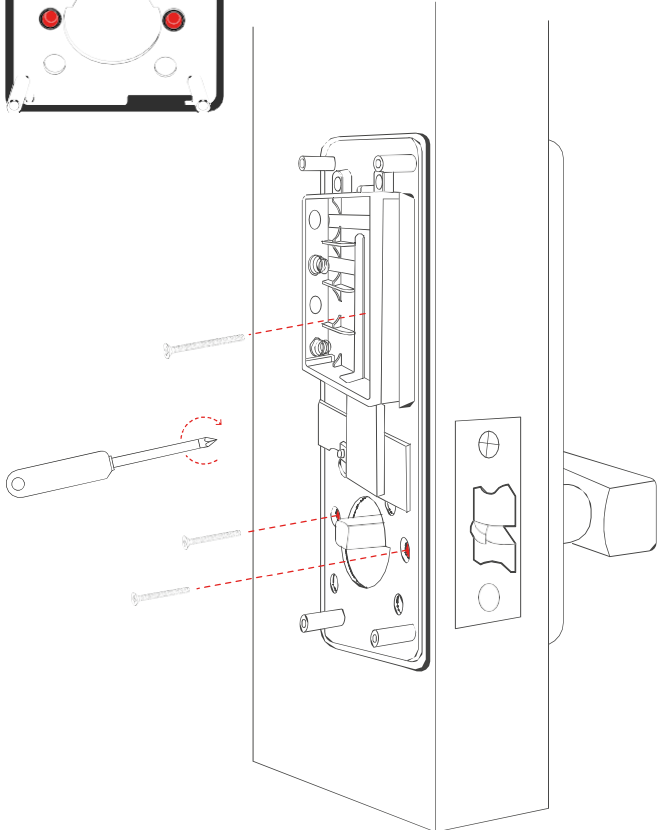
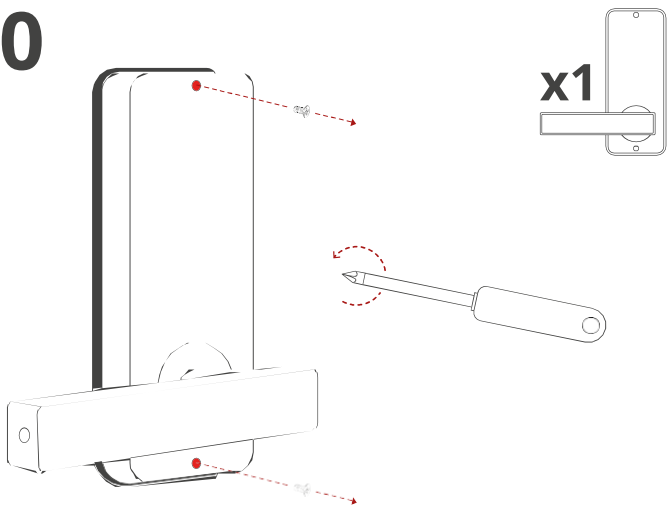
8



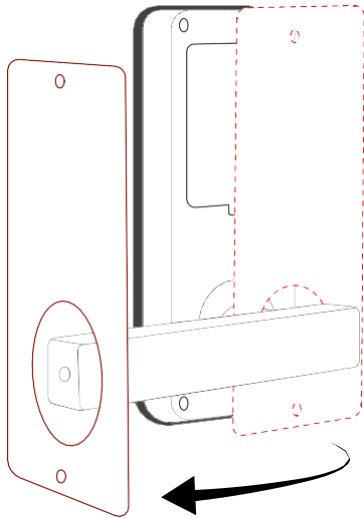
9



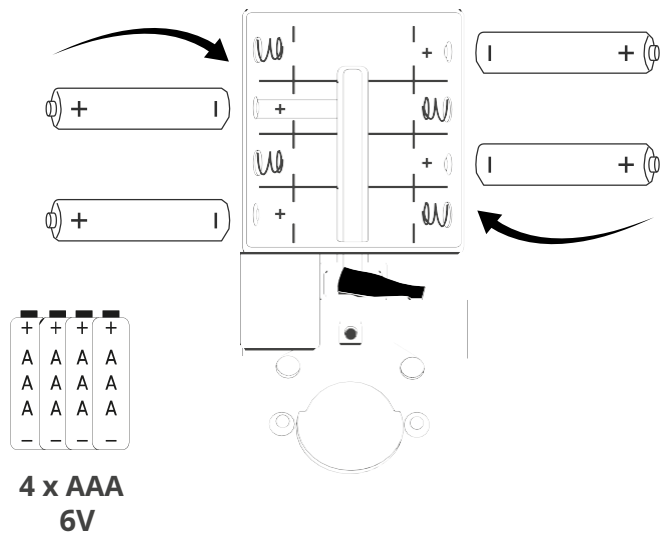
10



11



12

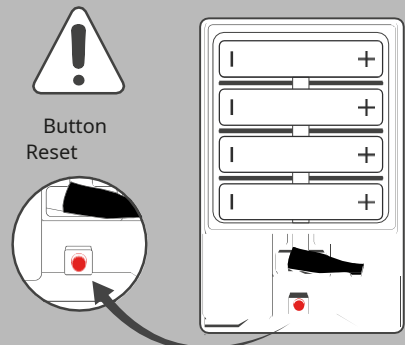


HARD LOCK RESET

BEFORE to close the battery compartment and with the lock on, the following must be done **RESET** manual of the same.

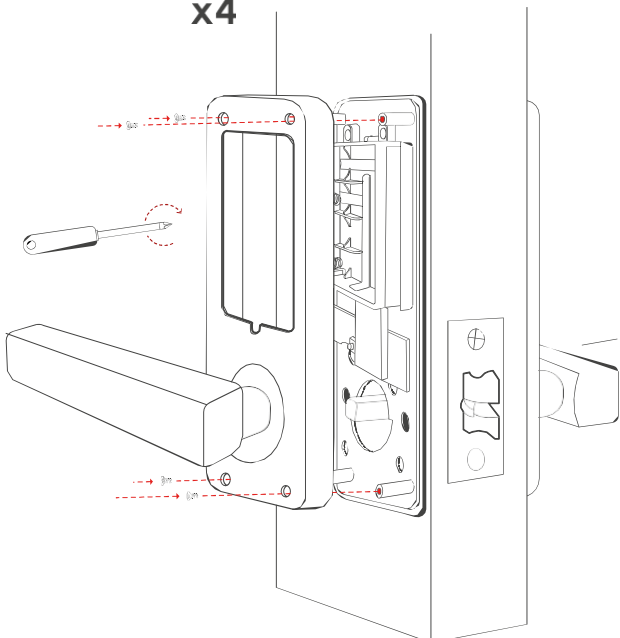
To do this, simply **press** the button **RESET** continuously during **5 seconds**, until the lock makes a sound. Then, type **"000#"** on the exterior panel keypad. The reset process is complete and the lock is ready to be paired.

If the lock disconnects (e.g. incorrectly placed batteries come out of place), the process will have to be repeated).

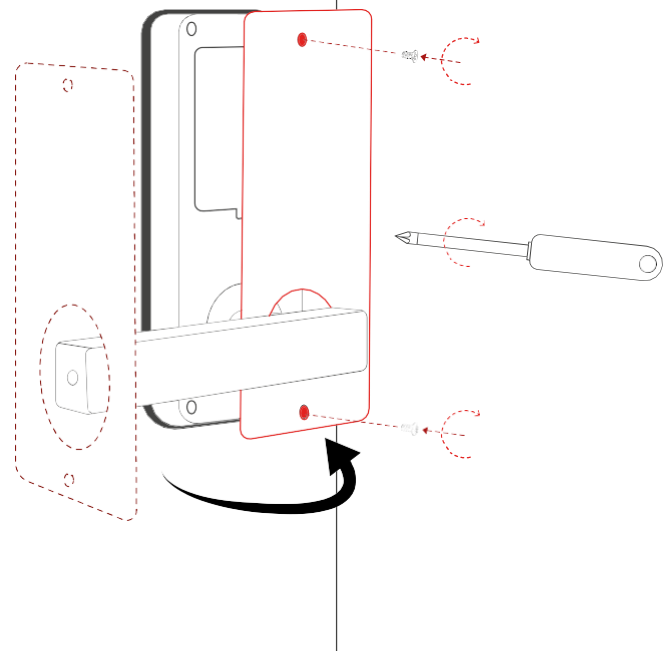


13

5mm
x4



14



The lock installation is complete!

To pair configurasua fechadura, please use the QR code or here link

to access the TTLock manual.



<https://trilow.pt/TTL OCK>

