



TRIPLO W
Criamos Segurança!

Installation Guide
User Manual

TW-8672

Standalone or APP Electronic Lock
Code, Card or Fingerprint



iOS



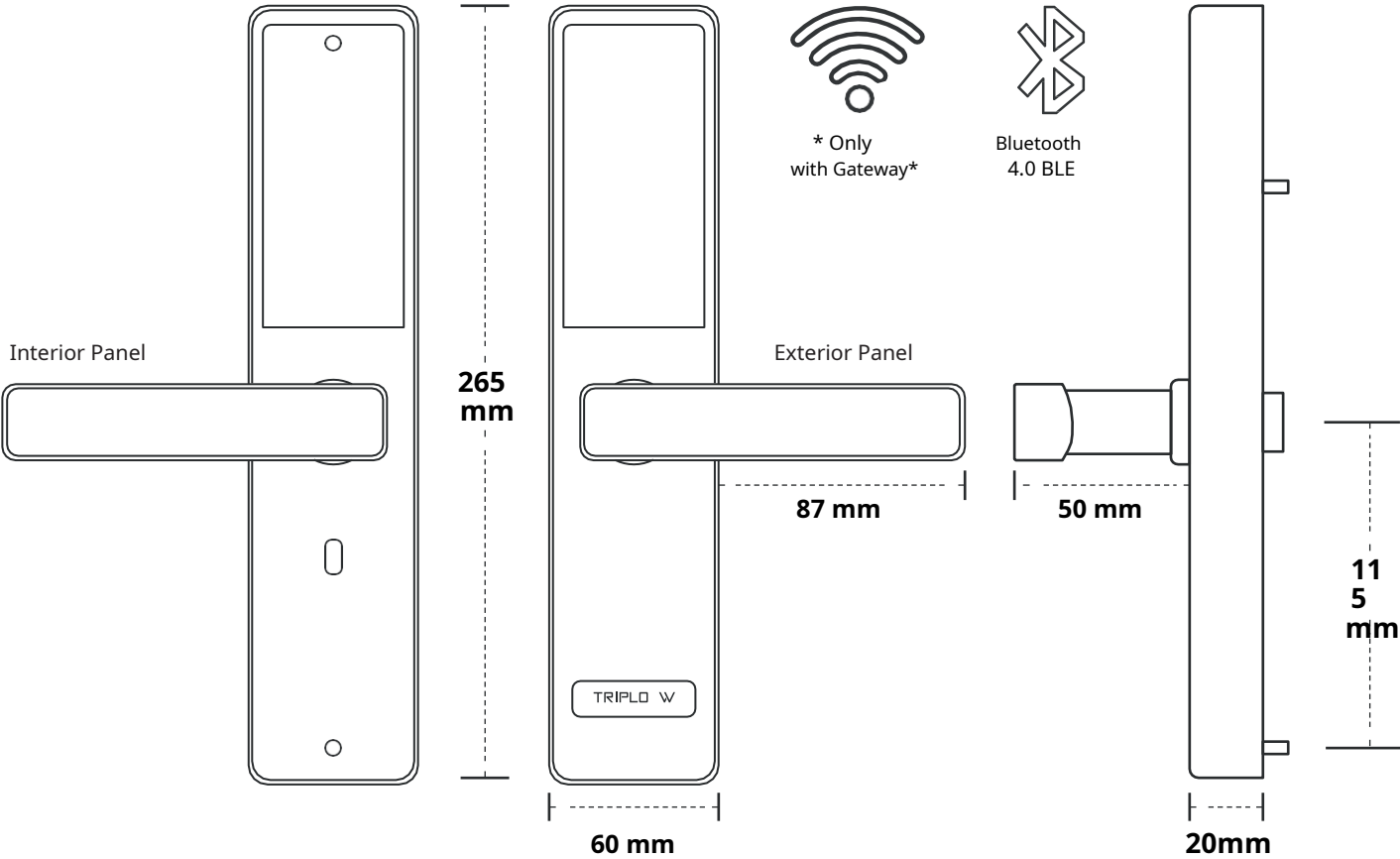
ATTENTION:

Leia o manual com atenção antes da instalação e guarde-o para uso futuro.

Guarde as chaves mecânicas num local seguro para, em caso de avaria ou emergência, poder abrir a porta mecanicamente.

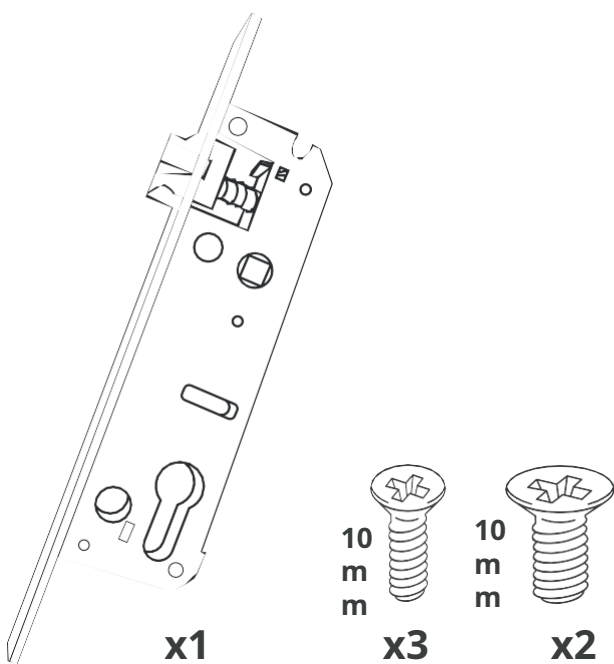
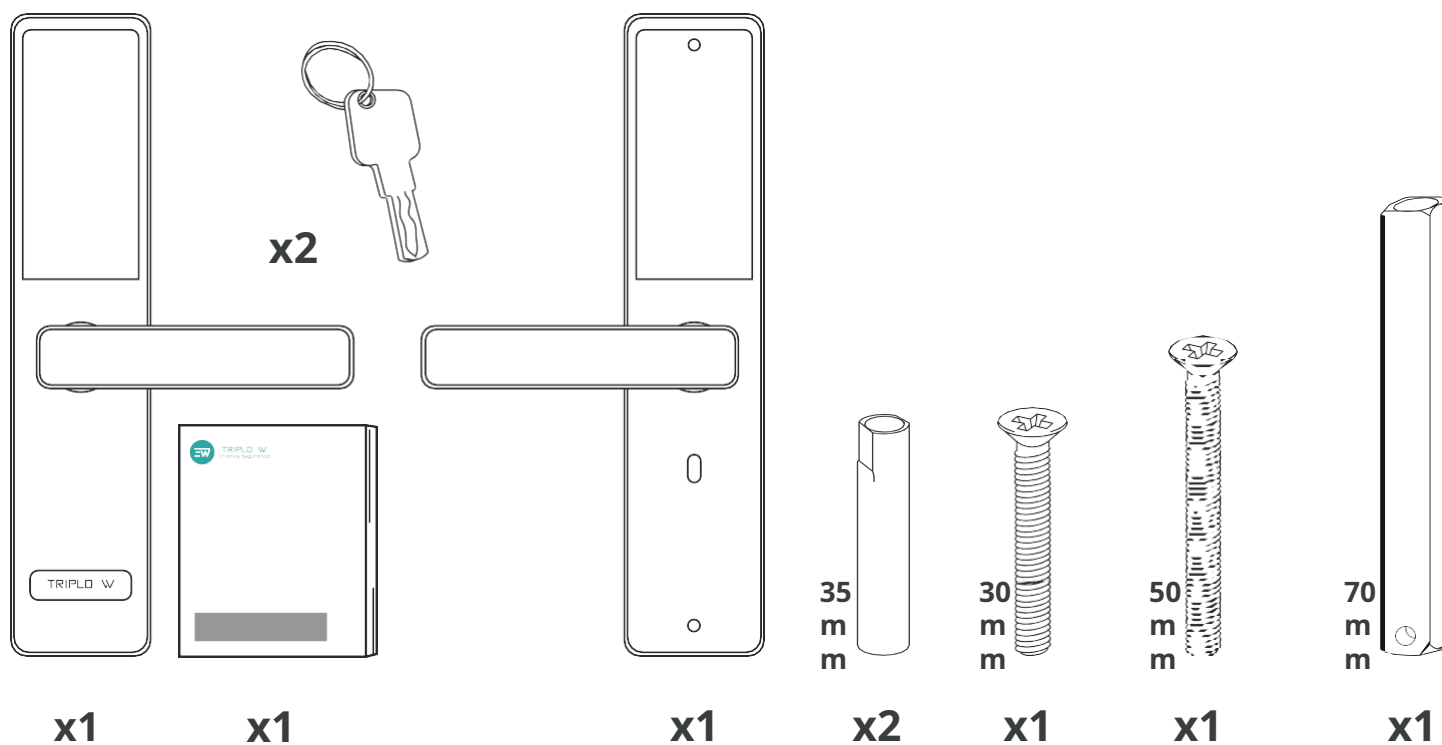
Tenha atenção ao nível de bateria para poder efectuar a substituição das pilhas atempadamente.

www.triplow.pt



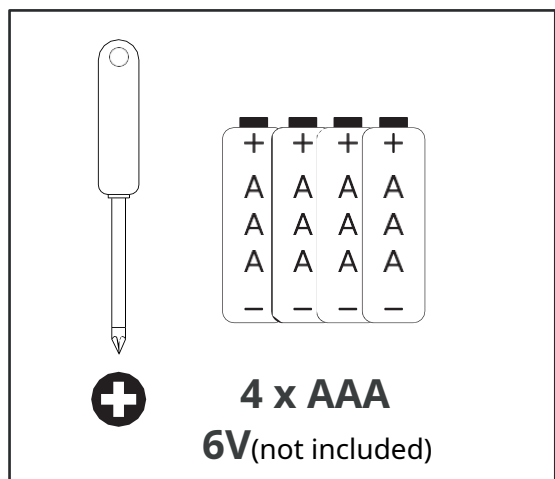
Technical Specifications

MODEL	TW8672
PANELS (INTERIOR AND EXTERIOR) (mm)	265 x 60 x 20 mm
TYPES OF OPENING	Biometrics, Bluetooth, APP, Code, Card Proximity
	Mechanical Key
AVAILABLE COLORS	Black
TYPES OF DOOR	Wood / Metal / Sliding Doors
DOOR THICKNESS (mm)	35 - 55 mm
OPENING RECORDS	Up to 1000 records
WORKING TEMPERATURE (°C)	- 25° +65°
BATTERIES/VOLTAGE	4 x AAA 1.5V Batteries (not included)
SOS ENERGY INPUT	Micro USB DC 5 ~ 7V
LOW VOLTAGE ALARM (V)	Less than 4.8V

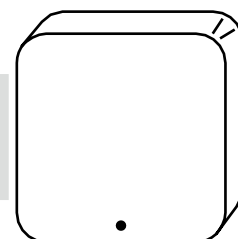


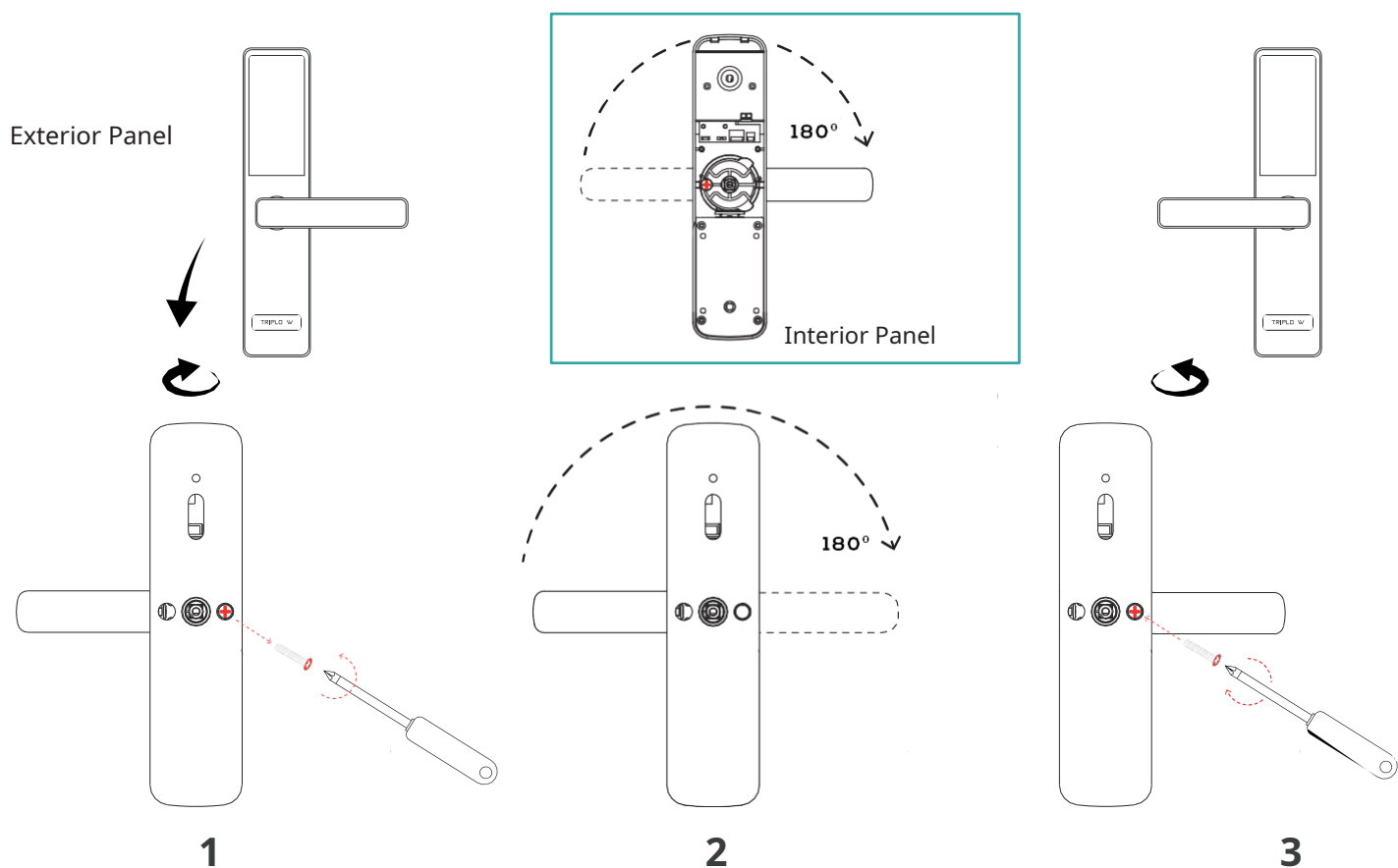
Notice:

BEFORE fully assembling the lock, it must be manually RESET. The RESET button is located inside the front panel. To access it, you'll need to remove the back of the front panel, insert batteries into the rear panel, and connect both panels using the power cable. To RESET, simply press and hold the RESET button for 5 seconds, until the lock beeps. Then, enter "000#" on the exterior panel keypad. The reset process is complete, and the lock is ready to be paired.



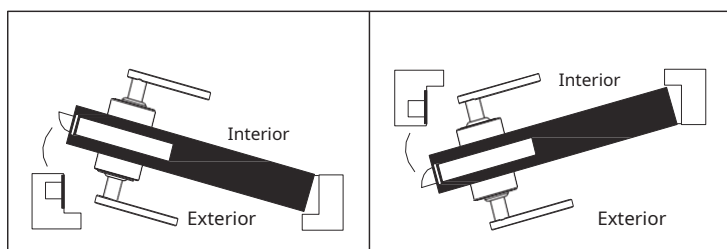
NOT INCLUDED
(optional)



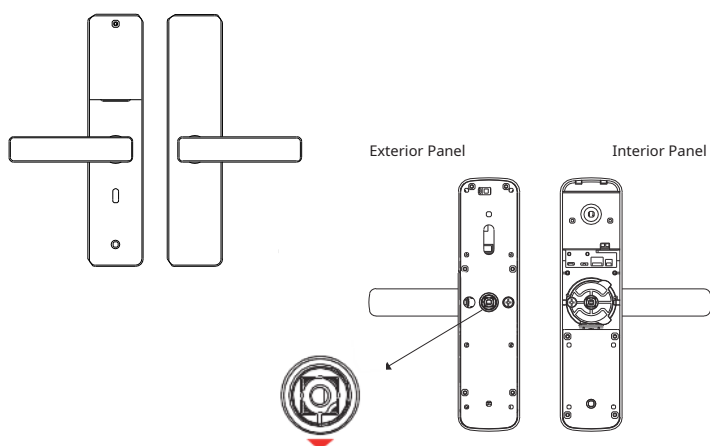
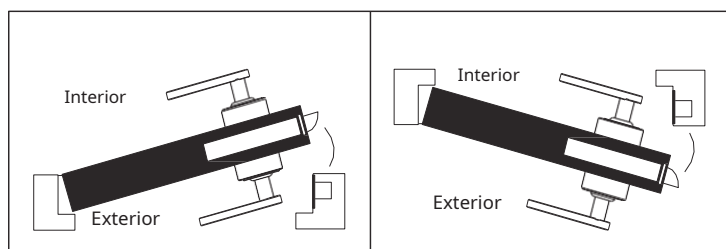


Door Opening - Direction

Door with Right Opening

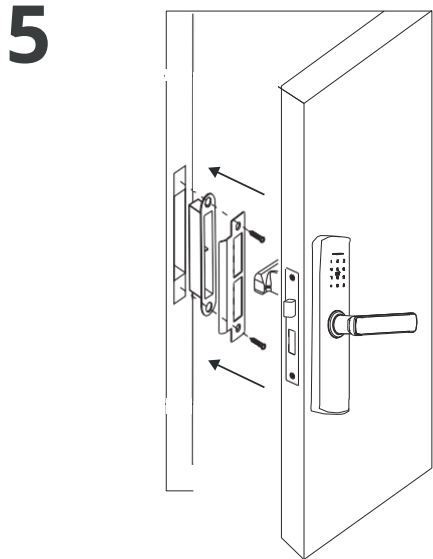
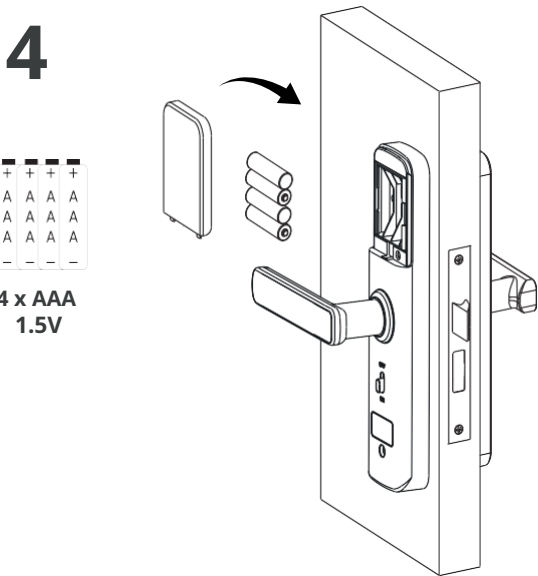
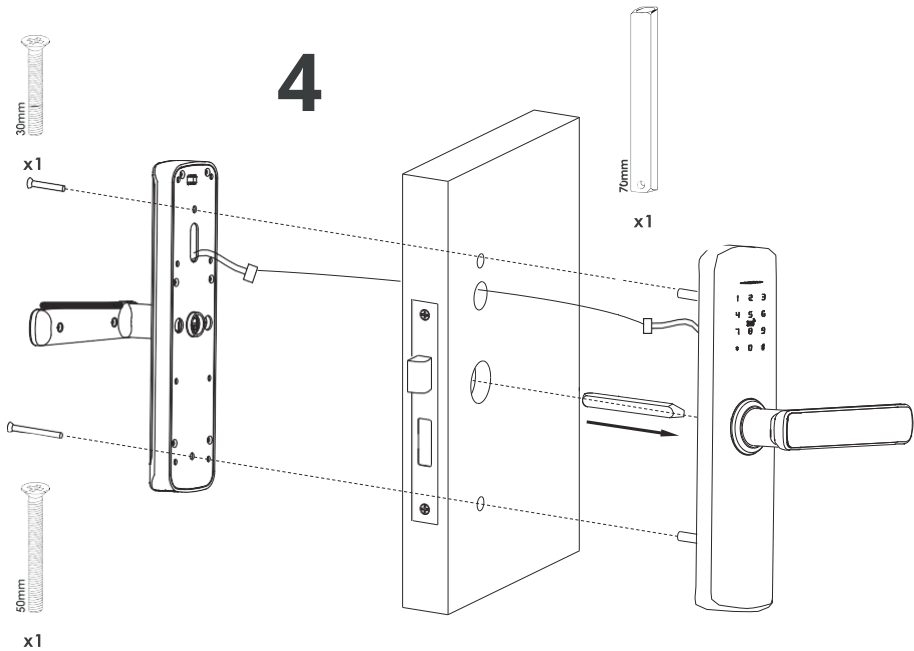
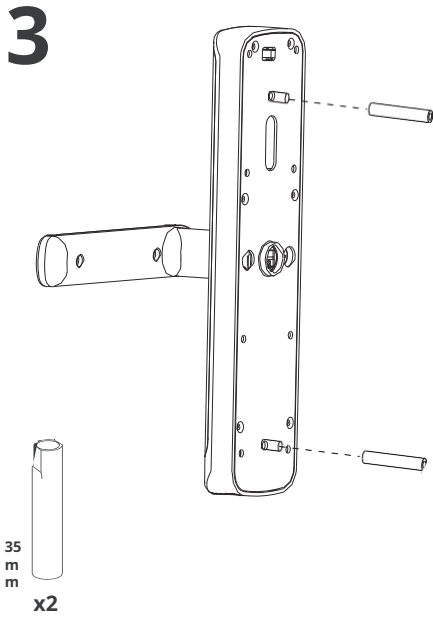
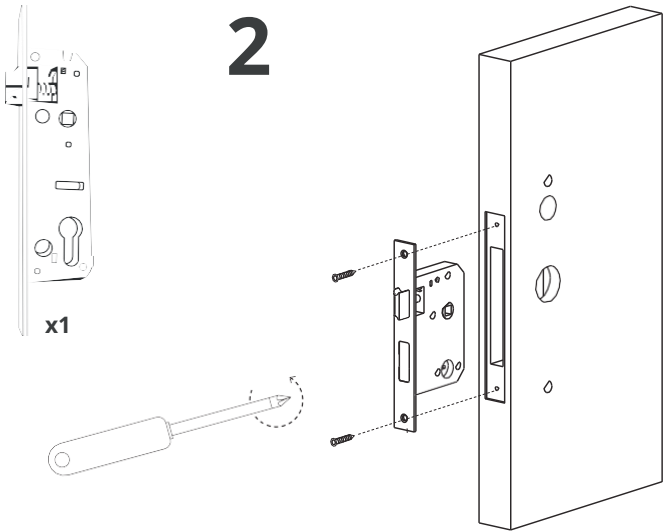
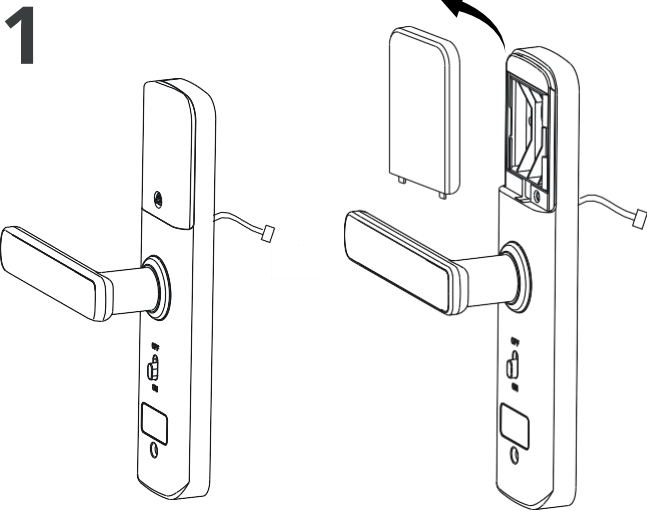


Door Opening to the Left



Court arrow position:

On latch and tongue boxes, the arrow position is facing down, as seen in the image on the left.



TT Lock Application Programming

Lock installation is complete!

**To pair and configure your lock, please
use the QR code or hyperlink to access the
TTLock manual.**



www.triplow.pt/TTLOCK

