



TRIPLO W
Criamos Segurança!

Installation Guide
User Manual

TWP008

Anti-panic bar with 2 locking points,
top and bottom



ATTENTION:

Leia o manual com atenção antes da instalação e guarde-o para uso futuro.

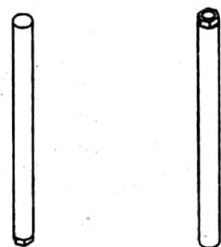
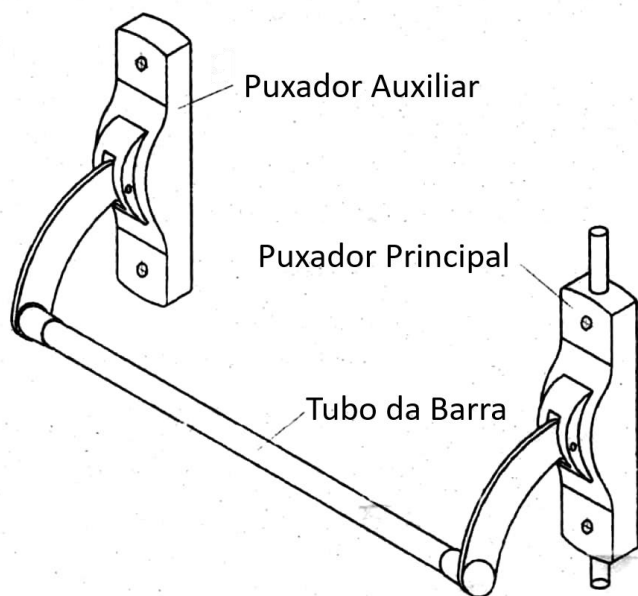
Guarde as chaves mecânicas num local seguro para, em caso de avaria ou emergência, poder abrir a porta mecanicamente.

Tenha atenção ao nível de bateria para poder efectuar a substituição das pilhas atempadamente.

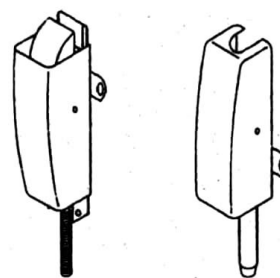
www.triplow.pt

Package Contents

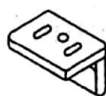
1



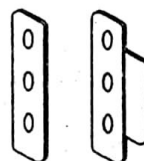
Tubos verticais



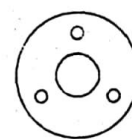
Trancas verticais superior e inferior



Espelho da tranca superior

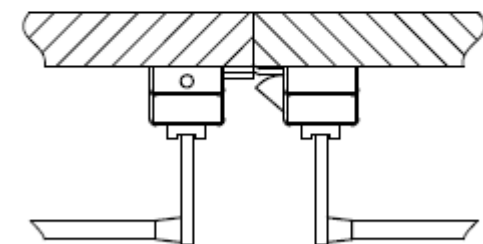
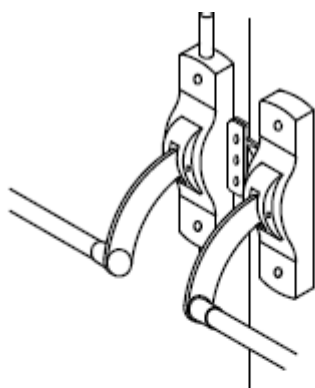


Espelho para usar apenas em portas de duas folhas

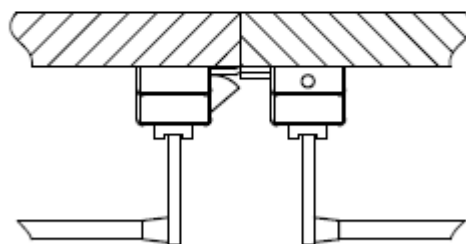
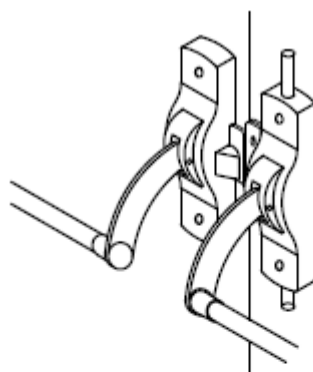


Espelho da tranca inferior

Door Preparation



Left-hand doors
(opening to the right)



Right-hand doors
(opening to the left)

1. Left-hand doors when the hinges are on the left and right-hand doors when the hinges are on the right
2. Adapt the bar to the door handle

Installation

1. On the inside of the door, mark the position of the bar, a line 1070mm from the floor and another line 70mm inwards, counting from the side of the door;
2. Position the main handle on the two drawn lines and mark the drilling. Drill the holes;
3. Install the vertical locks, aligning the lock holes with the main handle holes, and screw them in. locks;
4. Connect the bar tube to the main handle and the auxiliary handle, if necessary cut the tube to fit the width of the door;
5. Screw on the auxiliary handle;
6. On double-leaf doors, install the side mirror; Note: it is necessary to install both mirror components, as shown in the image; from the end of the door to the mirror hole there must be a distance of 7mm;
7. Install the upper mirror;
8. Install the upper lock and test the mechanism;
9. Install the lower mirror;
10. Install the upper vertical tube, with the different end facing upwards, turning it on the lock screw until it is tight;
11. Install the lower vertical tube with the different end facing down, turning it on the lock screw until it is tight, test the operation and then tighten the screws;
12. Install the mirror on the floor, with a 12mm hole in the floor

