



TRIPLO W
Criamos Segurança!

Installation Guide User
Manual

TW 650A

Lock
Electromechanics

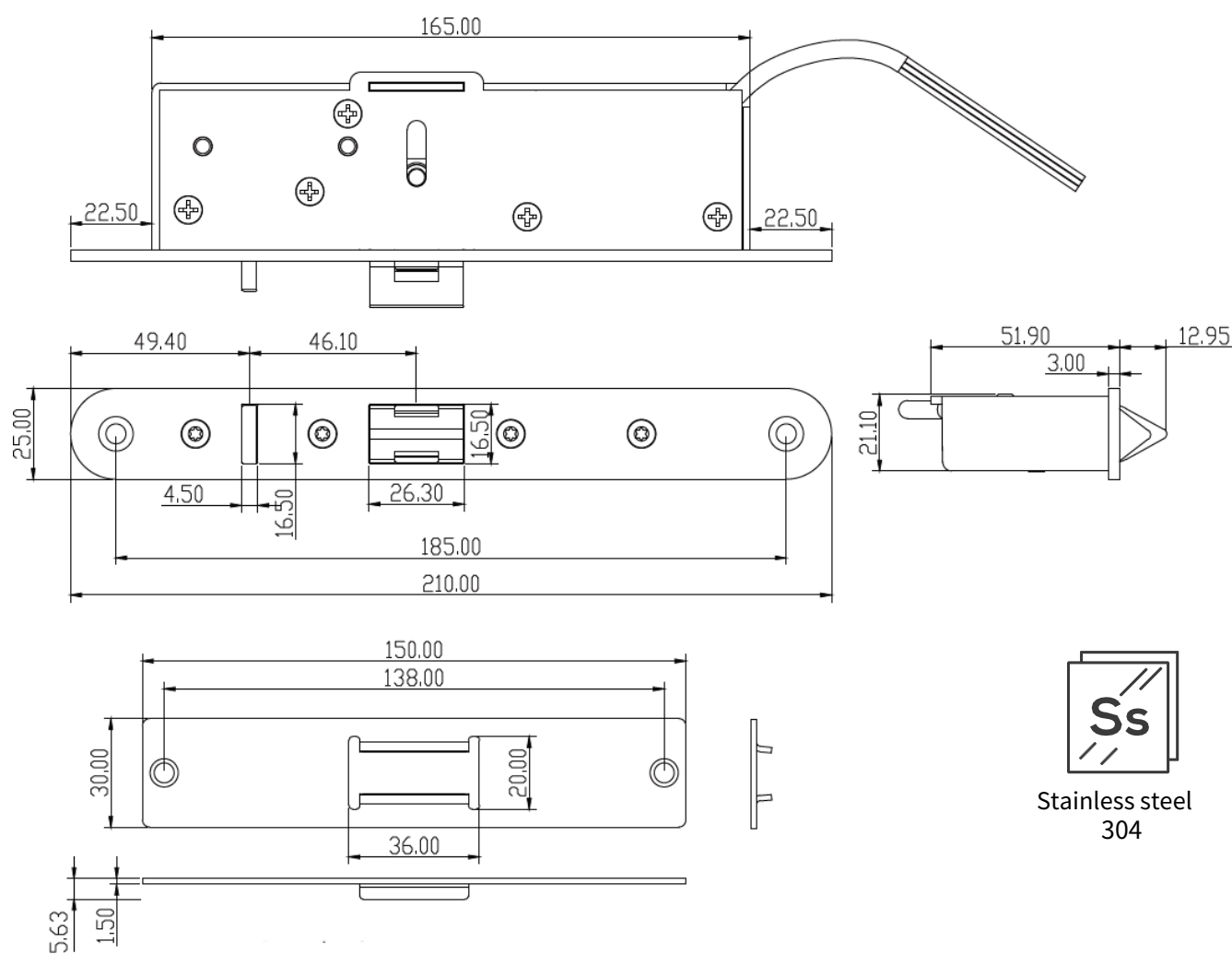
Installation video
TW650A
Piston Locks



ATTENTION:

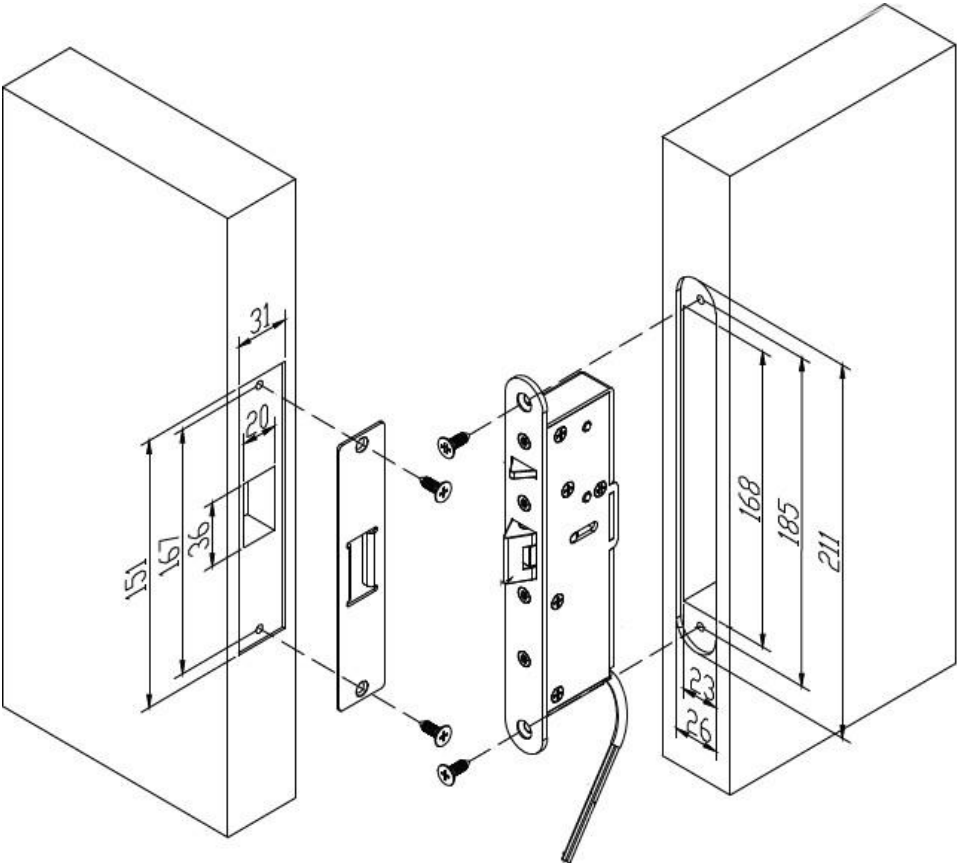
Please read the manual carefully before installation and keep it for future reference.

[www .triplo w.pt](http://www.triplo w.pt)



Technical Specifications

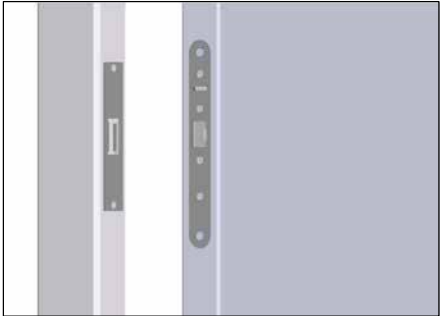
MODEL	TW650A
FEATURES	Fail Safe/Fail Secure (Adjustable)
MATERIAL	304 Stainless Steel
PLATE (mm)	210 x 25 x 51.9 mm
WEIGHT (KG)	0.8 kg
LOCK	150 x 30 x 1.5 mm
MAGNETIC VALVE	12-24VDC/AC
VOLTAGE	< 300mA
CURRENT	NO/COM/NC Contact
SIGNAL	Signal will change only when the door is closed and locked
WORKING TEMPERATURE (°C)	- 20° +50°



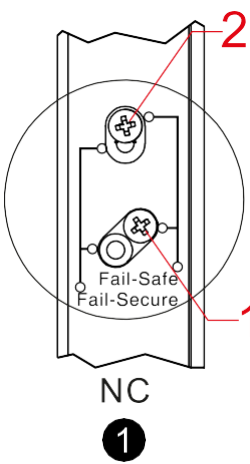
Upper Installation



Side Installation



Fail-Safe

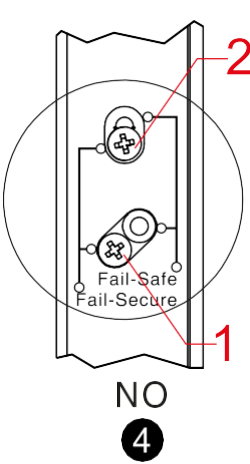
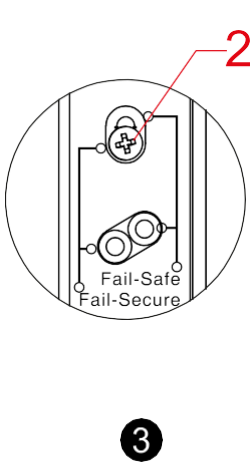
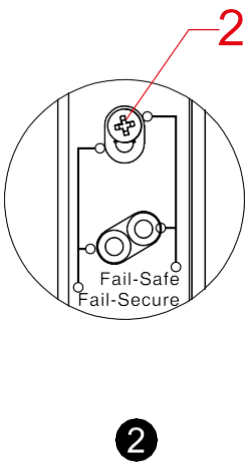


2

3

4

Fail Secure



Electrical Connection

	Vermelho		+	
	Preto		-	
	Amarelo		NC	Saída Sinal Fechadura
	Branco		COM	
	Verde		NO	



TRIPLO W
Criamos Segurança

Guarantee

Customer Name: _____

Customer contact: _____

Purchase date: _____

Product: _____ Model:

Notice:

- 1) Please keep this manual so you can use it when you need warranty service.
- 2) The warranty is valid for two years from the date of purchase.
- 3) The equipment is warranted for two years from the date of purchase against manufacturing defects. The warranty does not cover damage caused by improper use of the system, faulty electrical installation not verified by Triplo W, natural disasters such as thunderstorms, floods, or similar, as well as the replacement of components subject to wear and tear depending on use.

Reseller's Stamp and Signature