



# Triplow

7X0P40



Latch el

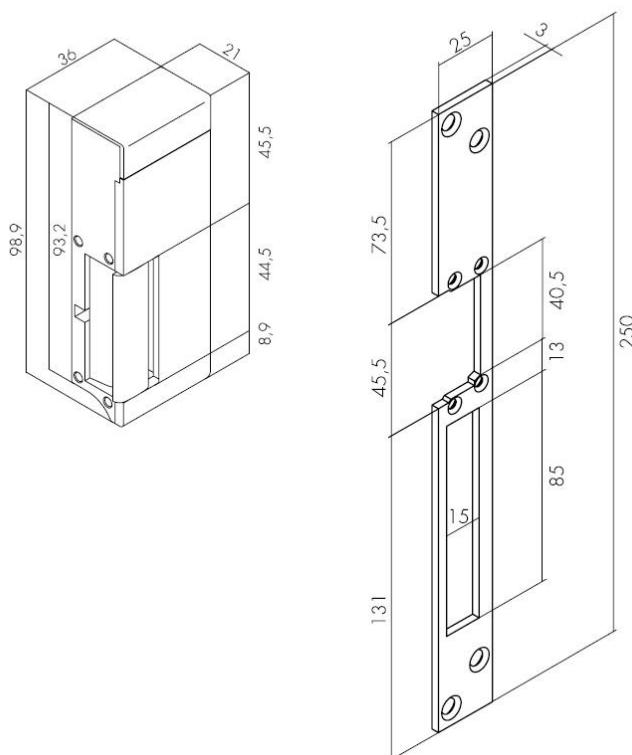
Waterproof, 12V DC, IP54



## Specifications

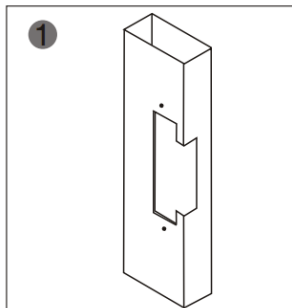
<b>Food</b>	12V DC
<b>Current</b>	230mA
<b>Opening Type</b>	NC Fail-Secure
<b>Appropriate</b>	Metal doors, Wooden doors
<b>Certificate</b>	IP54 (water and dust)
<b>Dimensions</b>	98.9 (L) x 21 (W) x 36 (H) mm
<b>Resistance force</b>	up to 5000 N

## Dimensions

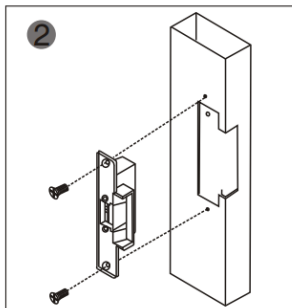




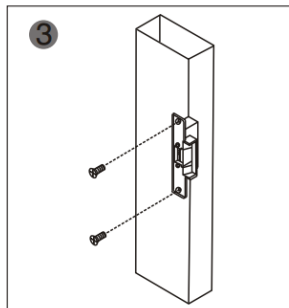
## Drilling Scheme



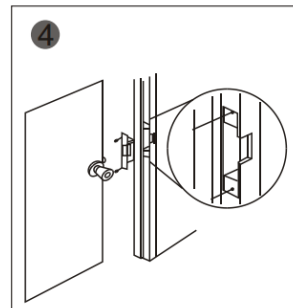
Cut hole according to the size of the latch.



Assemble the lock and turn on the power to test.



Fix the electric latch.



Finished.

## Wiring Diagram

