

TW853

Waterproof switch for roller shutter doors



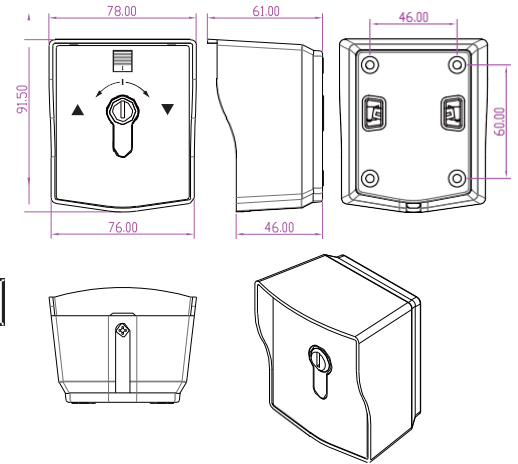
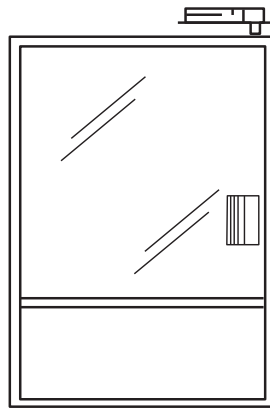
TRIPLE W
Criamos Segurança!



And specifications

Dimensions (mm)	76 x 91 x 46 (mm)
Material	Aluminum Alloy
Voltage	5A/125VAC (max)
Operation	NO/NC/COM
IP Protection	IP68
Useful Life	500,000 tests
Temperature	- 20 °C ~ +55 °C
Humidity	0-95%
Weight	0.4 kg

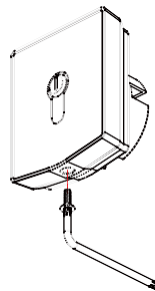
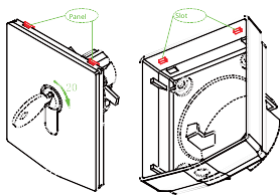
Dimensions



Installation

To assemble

1. Insert the key, turning it 20° to the right, keeping the cylinder open while fitting the panel into the lower groove.
2. Fix the panel and back box together
3. Secure the panel with the anti-theft screw.



Disassemble

1. Remove the anti-theft screw with the key provided.
2. Insert the key, turning it 20° to the right, keeping the cylinder open while disengaging the panel in the lower groove, separating the rear box panel

