



TRIPLO W  
Criamos Segurança!

Installation Guide  
User Manual

# TW-A210

Lock

Electronics with Fingerprint,  
code, card and APP



## ATTENTION:

Leia o manual com atenção antes da instalação e guarde-o para uso futuro.

Guarde as chaves mecânicas num local seguro para, em caso de avaria ou emergência, poder abrir a porta mecanicamente.

Tenha atenção ao nível de bateria para poder efectuar a substituição das pilhas atempadamente.

[www.triplow.pt](http://www.triplow.pt)

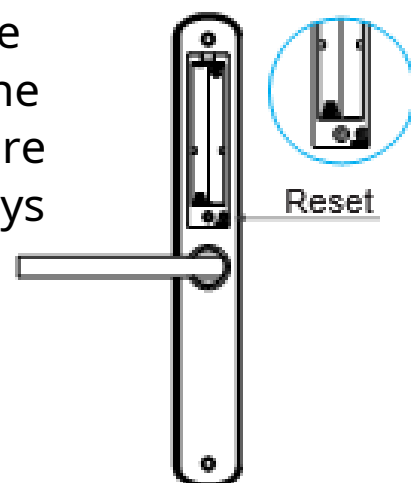
# Technical Specifications

MODEL	TW-A210
TYPES OF OPENING	APP, Code, Proximity Card Fingerprint, Mechanical Key (SOS)
WORKING TEMPERATURE (°C)	- 20°   +55°C
BATTERIES/VOLTAGE	4 x AAA 1.5V Batteries(not included)
Measures	303 X 43 X 25mm
Programming capability	Fingerprints: 100 / Cards: 200 users
Door thickness	38-55mm

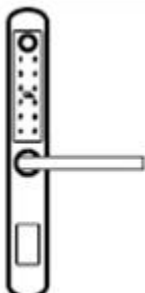
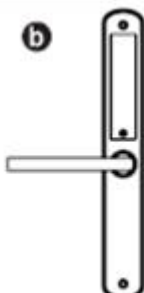
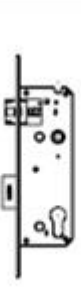











## Factory reset

Press the RESET button for 2 seconds until the lock beeps twice. Enter the code 123456. In the factory configuration, the lock does not require an opening order; the exterior handle is always active.



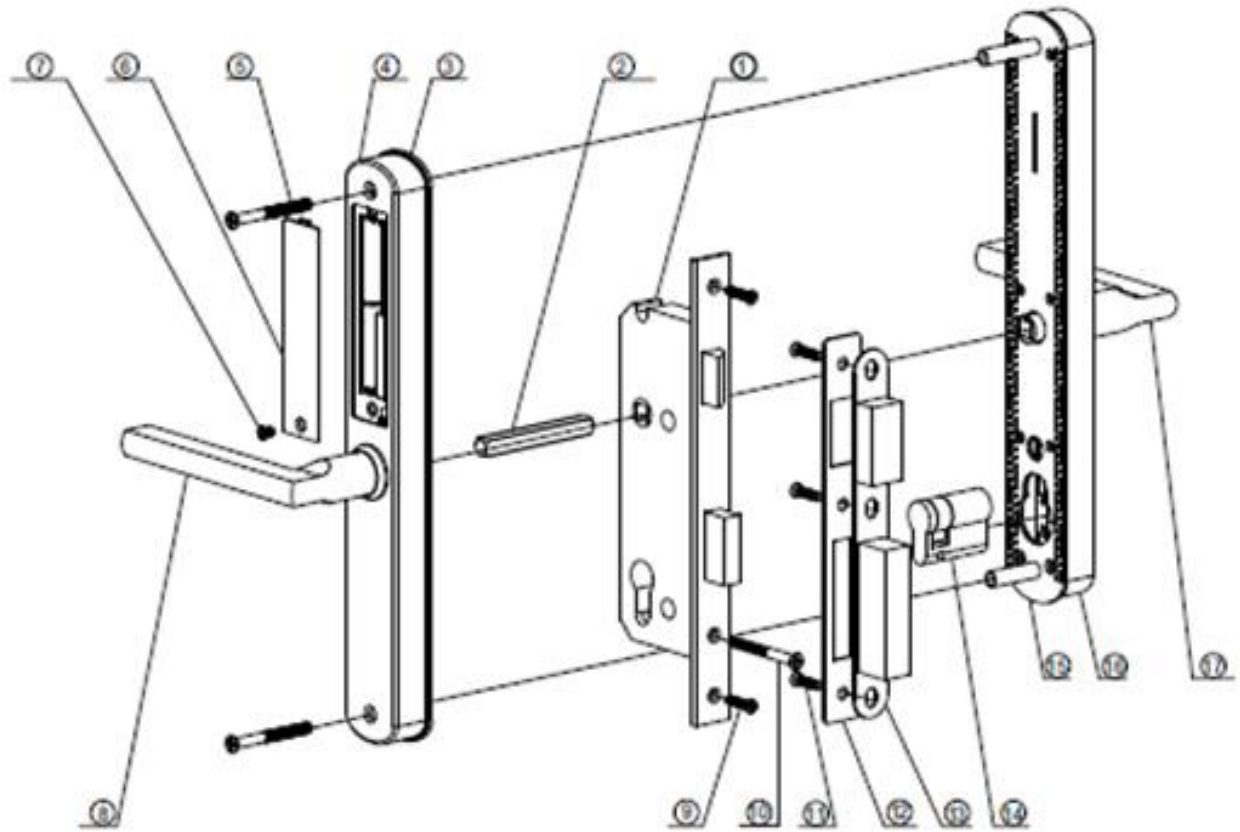
## Package contents

 <p><b>a</b></p>	 <p><b>b</b></p>	 <p><b>c</b></p>	 <p><b>d</b></p>	 <p><b>e</b></p>		
1 Pcs Painel frontal	1 Pcs Painel traseiro	1 Pcs Caixa mecânica	1 Pcs Espelho	1 Pcs Caixa de plástico		
 <p><b>f</b></p>	 <p><b>g</b></p>	 <p><b>h</b></p>	 <p><b>i</b></p>	 <p><b>j</b></p>	 <p><b>k</b></p>	 <p><b>m</b></p>
1 Pcs Quadra	1 Pcs Parafuso do cilindro	4 Pcs Parafusos de madeira	1 Pcs Parafuso da caixa das pilhas	2 Pcs Parafusos M4	1 Pcs Cilindro	2 Pcs Chave mecânica

## Adaptable to various types of doors



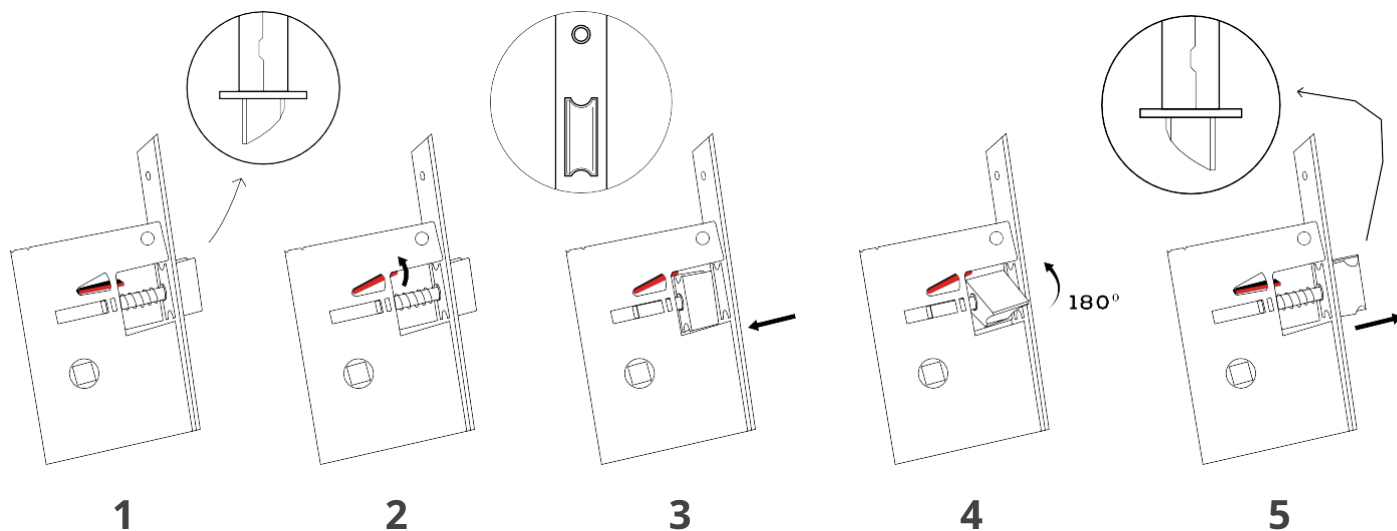
## Graphical explanation of components



No.	Name	Qdd	No.	Name	Qdd
1	Mechanical box	1	10	Cylinder screw	1
2	Block	1	11	Mirror screws	3
3	Rubber protector rear	1	12	Mirror	1
4	Rear panel	1	13	Plastic box of mirror	1
5	Fixing screw	2	14	Cylinder	1
6	Battery box cover	1	15	Rubber protector front	1
7	Battery case screw	1	16	Front panel	1
8	Rear handle	1	17	Front handle	1
9	Box screw mechanics	2			4

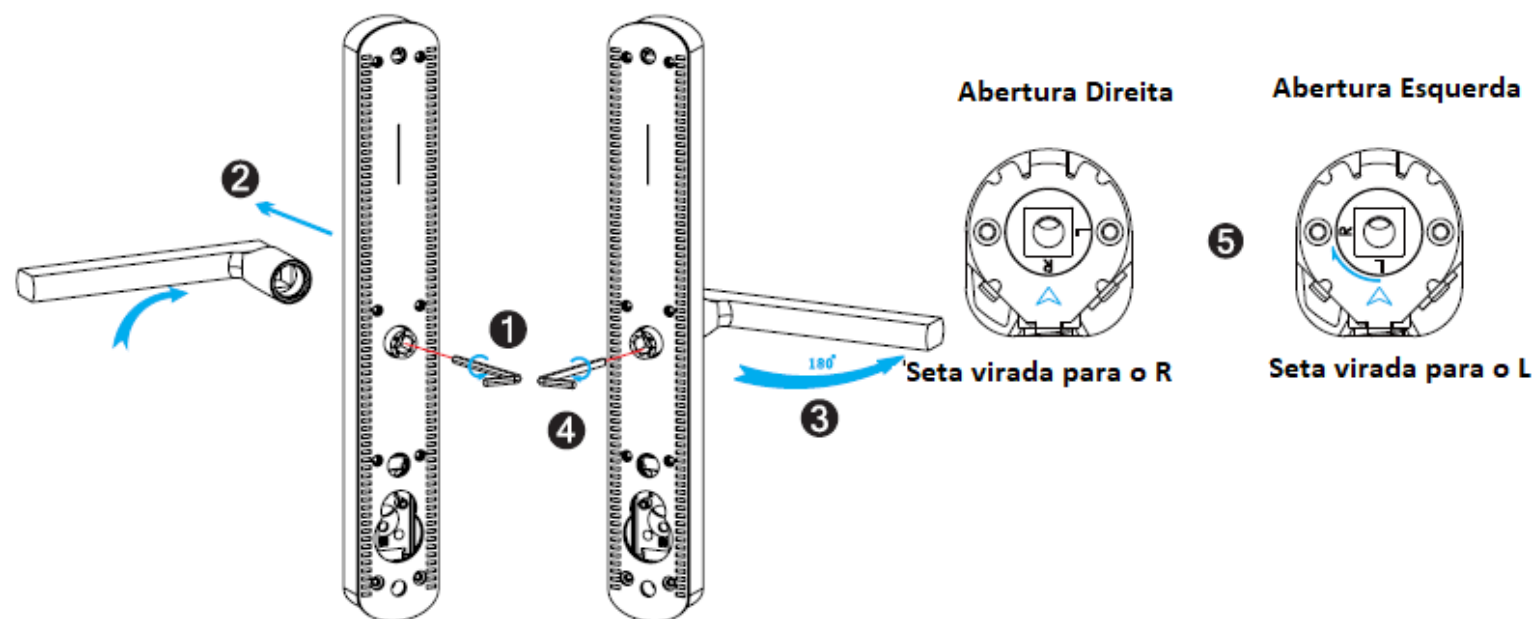
## BEFORE INSTALLING

## Inverter the Latch

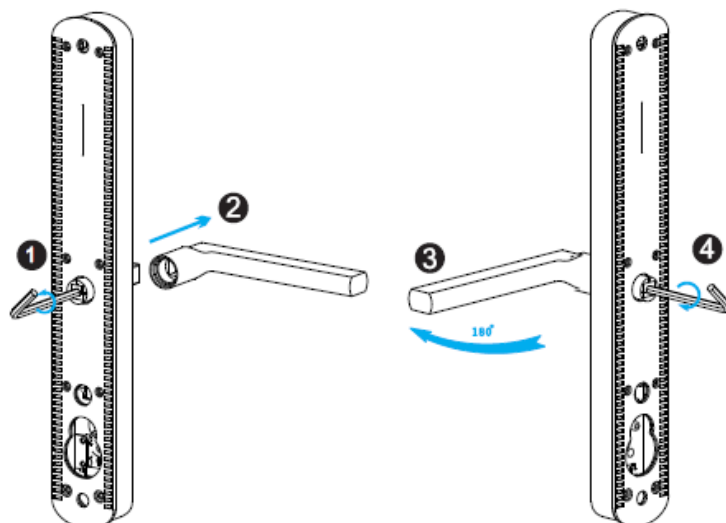


## Turn Handle

### Front Handle

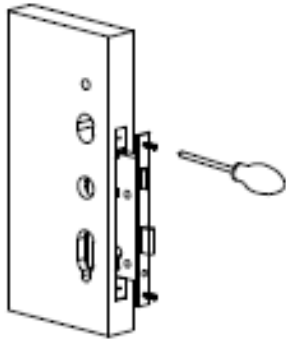


### Rear Handle

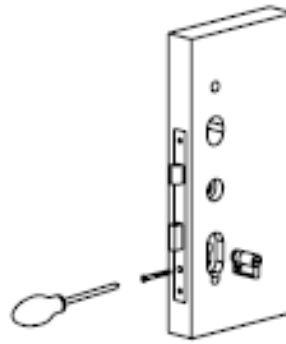


# Lock Installation

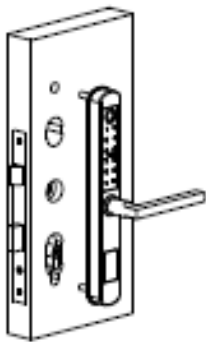
1. Install mechanical box



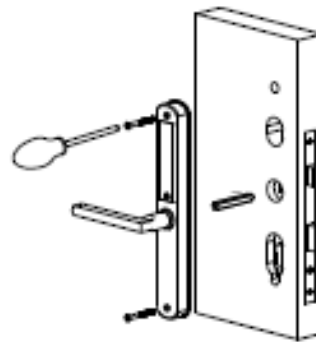
2. Install cylinder



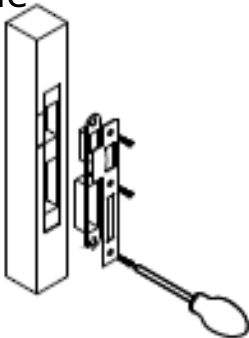
3. Install front panel



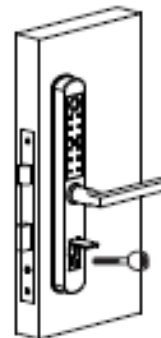
4. Install rear panel



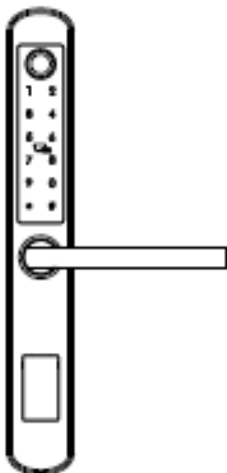
5. Install mirror on the door frame



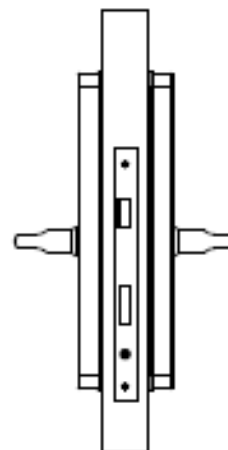
7. Test mechanical key



8. Insert batteries and test factory code: 123456



9. After testing for proper functioning, confirm that the screws are securely tightened.





# TT Lock Application Programming

**Lock installation is complete!**

**To pair and configure your lock, please use the QR code or hyperlink to access the TTLock manual.**



[www.triplow.pt / TTLO CK](http://www.triplow.pt / TTLO CK)



Google Play



App Store