



## Assembly instructions

### Notes:

This model is equipped with a tab on the inside that allows the lock to remain permanently open (free passage).

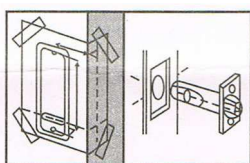
Before installing the lock, make sure it's working properly. The lock comes with a card with a code we randomly assign to it. Test the lock.

### 1. Installation

Tape the provided template to the door.

Mark and drill all holes with a 10mm drill bit.

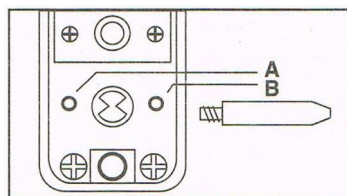
Use a chisel or file to clean up the open horizontal line with the 4 holes.



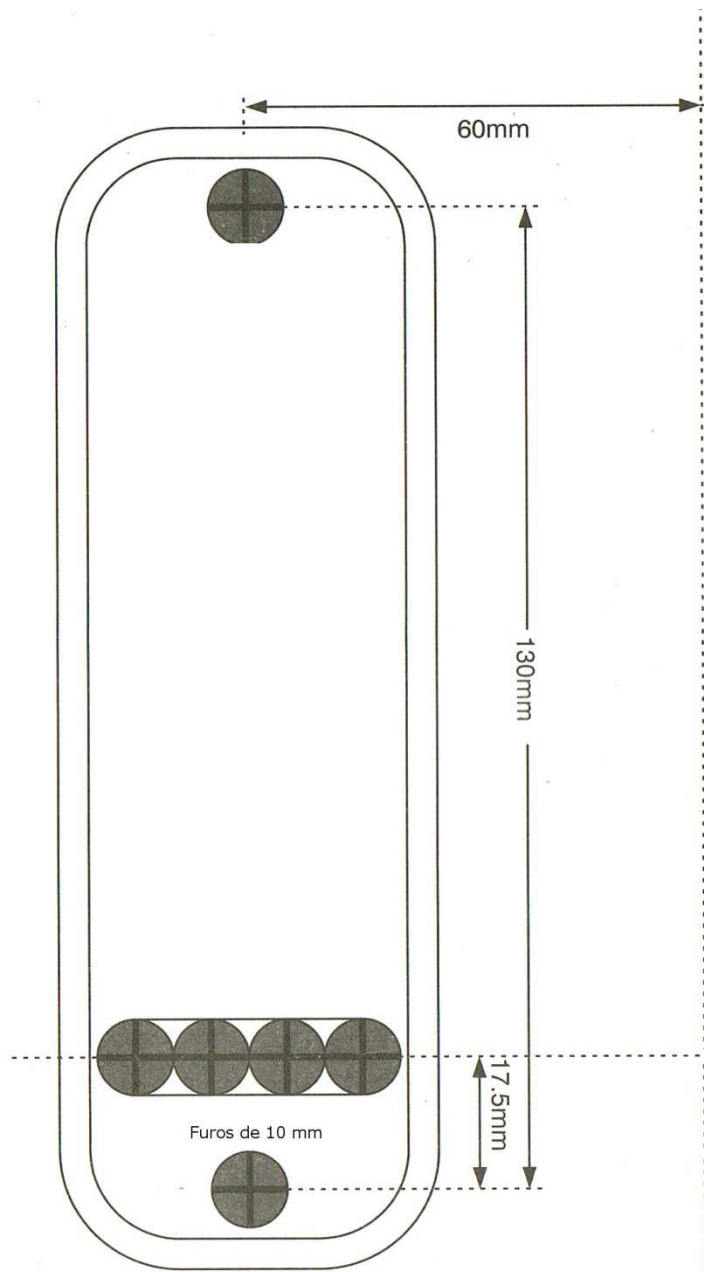
Mark the center of the latch at the top of the door. Drill a 25mm hole 85mm deep. Insert the latch into the hole and trace the rectangle of the mirror with a pencil.

Remove the latch and countersink the rectangle by cutting 3 mm deep so that the latch plate is flush with the door.

Secure the latch with the wood screws provided.



Screw in the latch fixing pin  
The bolt must be tightened in hole A if the port is Right and in hole B if it is on the left



Insert the shaft (rectangular bar provided) into the latch hole. The shaft must be cut to the thickness of the door.

Cut the provided screws to the thickness of the door.

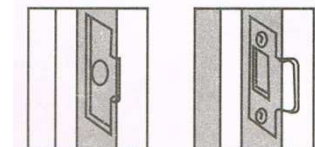
Hold the lock and the interior mirror with the seals in place and fit the two bodies onto the shaft already in place and secure the assembly with the screws.

Before final tightening, check that the lock is in a vertical position and that the mechanism operates freely.

**Do not close the door until you have verified that the code works correctly and that you can open it after closing.**

Do not overtighten the screws, as this could cause the sliding elements to jam. Place the mirror on the door frame so that it is aligned with the latch.

Mark the contour and countersink 1 mm.



(lock) and another with a cylindrical shape (brake)

Drill or cut a recess for the latch and fasten the mirror with one screw. Check that the mirror is in the correct position and tighten the second screw. Note that the latch consists of two parts: one is a bevel.

The lock prevents someone with bad intentions from opening the lock using a plastic card or other flexible tool.

To change the direction in which the interior handle will turn, simply loosen the blue screw tightened inside the interior plate of the lock and retighten it in the other free hole.

## 2. How to change the code

Remove the door lock.

Remove the four red screws securing the cover. Be careful during this operation and keep the lock on a flat surface, as there are many small accessories in this area.

You will now see 5 red keys and 8 blue keys in addition to a colorless key (Button C).

To change your code, press and hold button C on the other side of the lock. You can now remove one or more red and blue keys using the tweezers provided.

Never remove the key associated with button C. It only serves to unlock the other keys, allowing them to be operated.

Note the different shape of the keys before reinstalling them in their new location. Besides the different shape, they must be inserted into the slot in a specific position, as shown in the figure.

After installing the keys, note their new location in a safe place and reattach the cover with the four screws. In addition to the lock keys, more are provided in the accessory bag, allowing you to increase the number of combination keys to six or seven, or reduce them to four.

