



TRIPLO W
Criamos Segurança

Installation Guide
User Manual

TW3972

Mechanical code lock



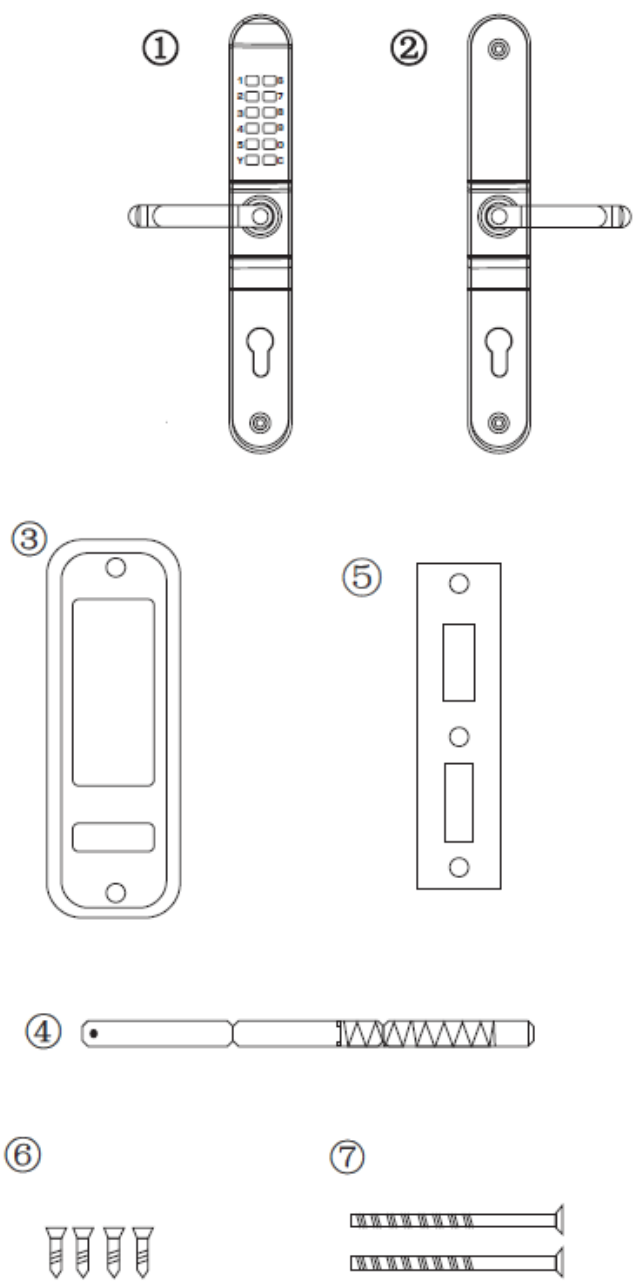
ATTENTION:

Leia o manual com atenção antes da instalação e guarde-o para uso futuro.

Guarde as chaves mecânicas num local seguro para, em caso de avaria ou emergência, poder abrir a porta mecanicamente.

Tenha atenção ao nível de bateria para poder efectuar a substituição das pilhas atempadamente.

www.triplow.pt

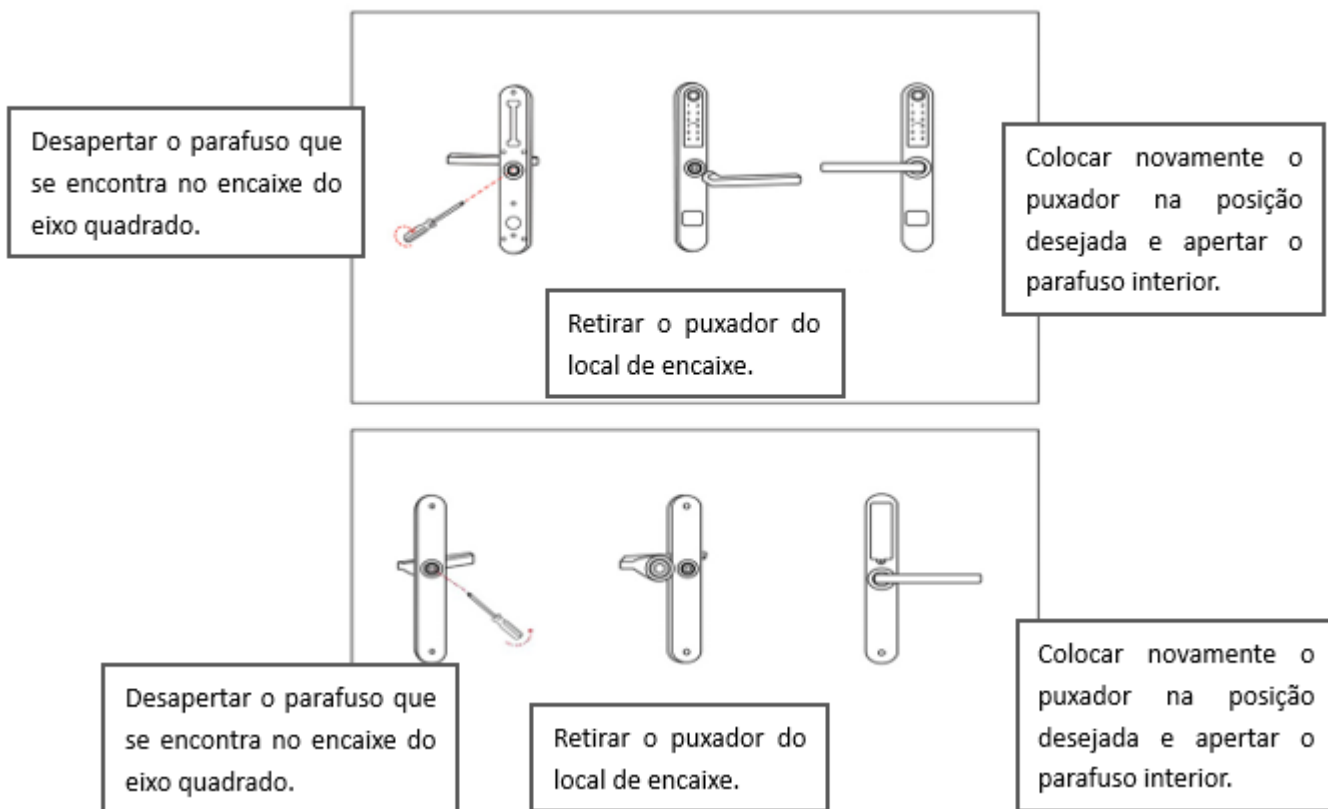


- 1. Front panel
- 2. Rear panel
- 3. Insulating rubbers
- 4. Court
- 5. Mirror
- 6. Wood screws
- 7. Fixing screws

Technical Specifications

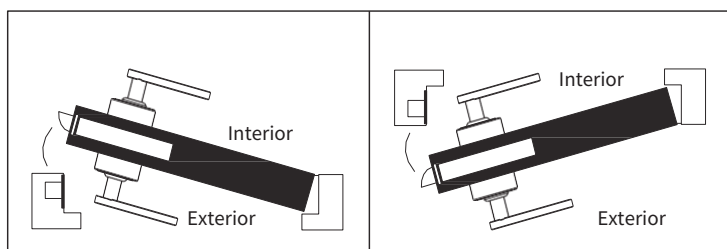
MODEL	TW3972
PANELS (INTERIOR AND EXTERIOR) (mm)	300 x 42 x 26 mm
TYPES OF OPENING	Code, Mechanical Key
AVAILABLE COLORS	Silver
TYPES OF DOOR	Wood / Metal

TW3972
300 x 42 x 26 mm
Code, Mechanical Key
Silver
Wood / Metal

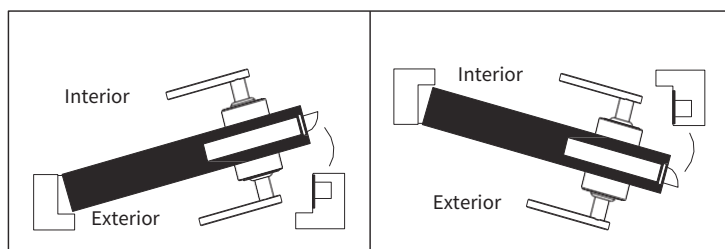


Door Opening - Direction

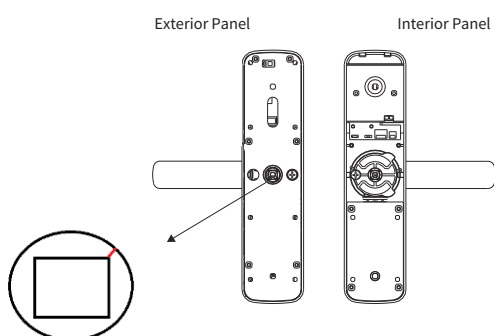
Door with Right Opening



Door Opening to the Left



Court arrow position:



In the hole of the court in the outer panel there is a groove, marked red in the image to the side. This groove must be facing the handle side.

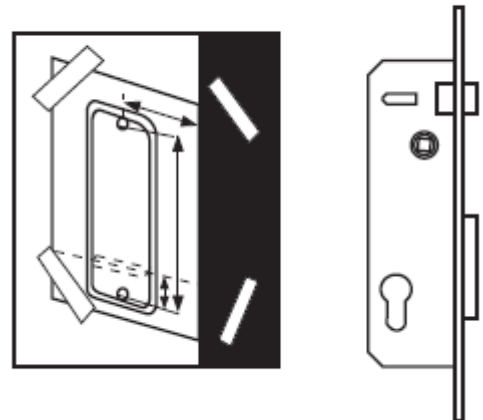
Important Note

Check that the parts are complete before starting installation: set the code according to the setup instructions, then insert the block with the shaft arrow facing the handle side. Enter the code correctly and turn the handle to test that it returns to its original position automatically. If you want to change the code, you will need to change it before installation. See the code change instructions for details. Before installing the lock body, the user must set the door hand according to the actual opening and closing directions and adjust the direction of the lock outside the door correctly to ensure the handle is free for installation.

Installation

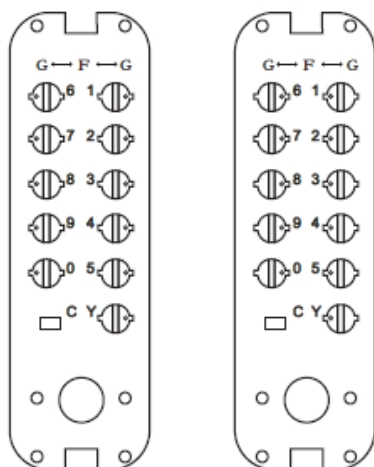
Door panel drilling:

- 1、 Place the open front panel on the door to ensure that it is installed at an appropriate distance from the folded position (60 mm) of the lock tongue (see illustration).
- 2、 According to the marks of each fur 10mm.
- 3、 Chisel a row of grooves to arrange 4 10mm holes. 4、 Mark a midpoint at the distance from the door, which is on the midline of the lock.
- 5、 Drill a hole with a diameter of 25 mm and a depth of 85 mm.
- 6、 Install the latch into the hole and mark the perimeter with a panel line.
- 7、 Push the latch tab and cut to a depth of 3 mm so that the panel is completely flush with the door surface.
- 8、 Lock the tongue securely with wood screws.



Change Code

No code
All numbers do part of the code



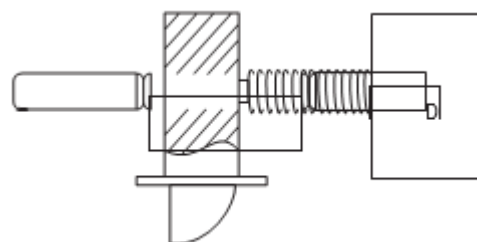
To change the code, you must remove the door lock. Inside the front panel, you'll find the pins for the number buttons.

To make a button part of the code, you must turn the peg point to the inside (letter F, as identified in the image to the side). If you don't want a button to be part of the code, the peg point for the corresponding number must be facing out (letter G).

Test the code before installing the lock.

Court Installation

1、 Each block is an axle with a spring structure. There are two blocks, which will be inserted into the center of the mechanical box, one on each side, the goal being to maintain the shaft's line of rotation at the end.



of the installation. The center of the mechanical box wheel is split, so that the handles act independently.

2、 The attached shaft can be used on doors with a door body thickness of 35-60 mm.

3、 When installing the court, remember that the court fixing markings are inserted into the mechanical box, the other side is inserted into the panel hole, and this side must be inserted all the way.

4、 You must lift the handle up after closing to lock automatically.