



TECHNICAL SHEET

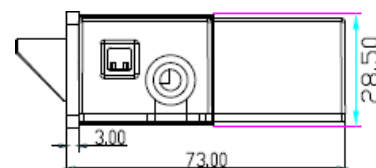
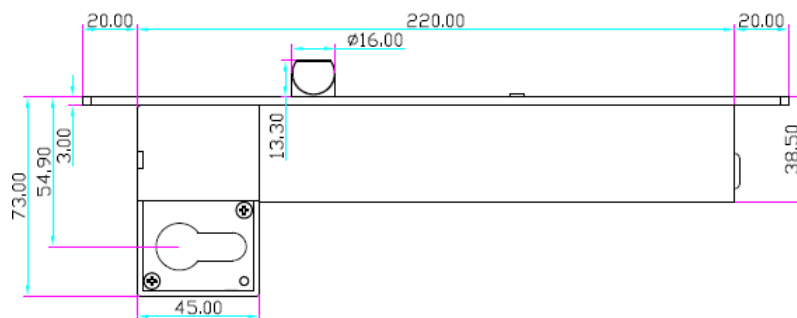
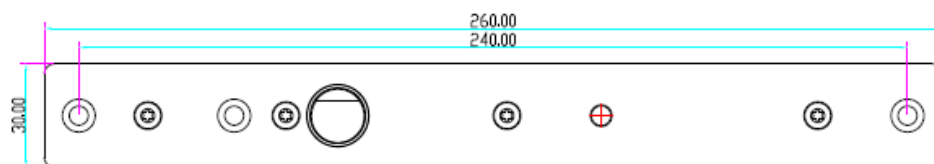
Mortise piston (bevel) lock with cylinder



YB-630C

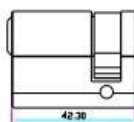
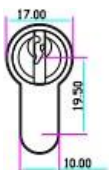
- Model: YB-630C
- Latch: 260 x 30 x 73 mm Magnetic plate: 100 x 25 x 2.5 mm Piston: 16 mm (projection), 16 mm (diameter) Output signal: NO/NC/COM
- Timer: 0/3/6/9 seconds
- Voltage: 12 V DC
- Current: Trigger – 1000mA, Rest – 90mA
- LED: Red: door closed
- Detection distance: 8mm Material: Brushed stainless steel (304) Weight: 1.8 kg
- Operating mode: Fail Secure (Opens with voltage supply)
- Suitable for: Wooden, metal and fire doors.

Dimensions

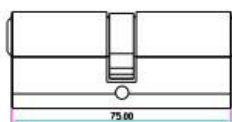
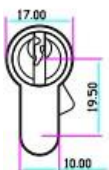




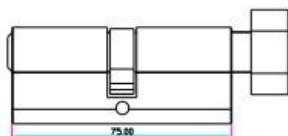
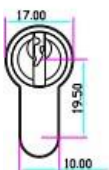
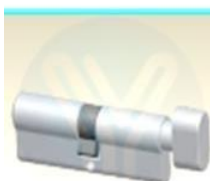
Accessories



One-way cylinder
(on request)

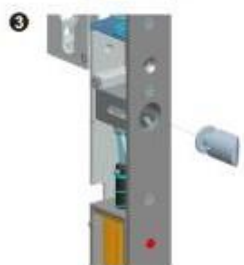


Bilateral Cylinder
(on request)



Bilateral cylinder
with knob

Reversible



(Outside)

❶ Left door opening outwards

❷ Right door opening exterior



❸ Left door opening inwards

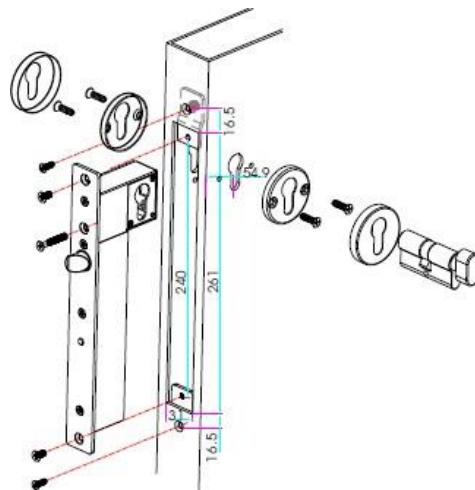
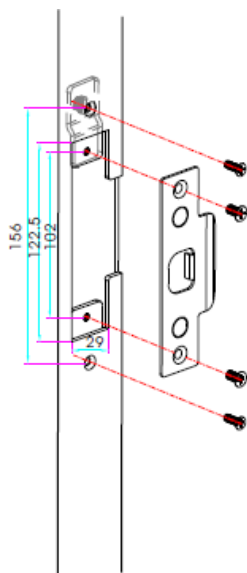
❹ Left door interior opening

(Inner Side)



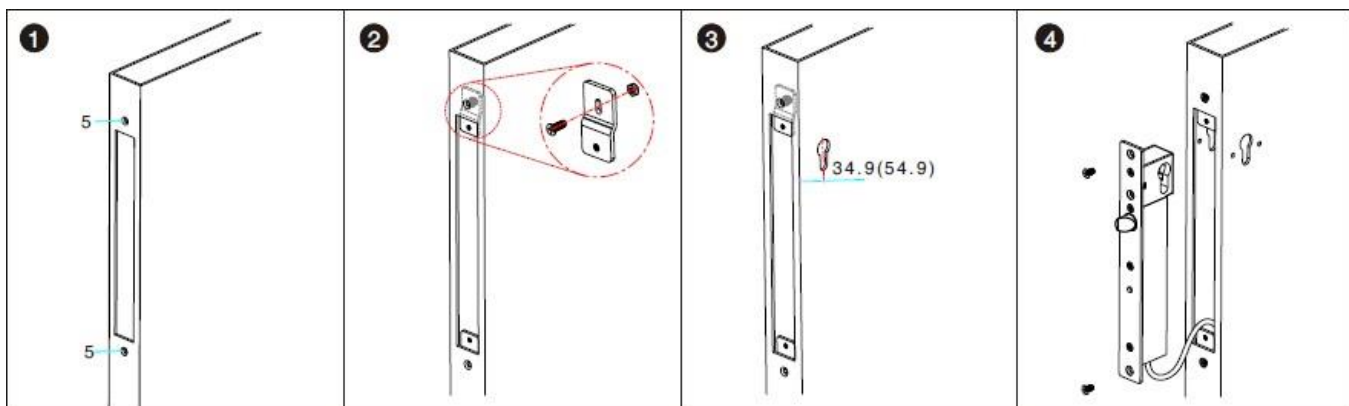


Installation Diagram



YB-630C(LED)

Installation Steps



1 Drill and cut the door to the latch body.

2 Install the sheets fixation.

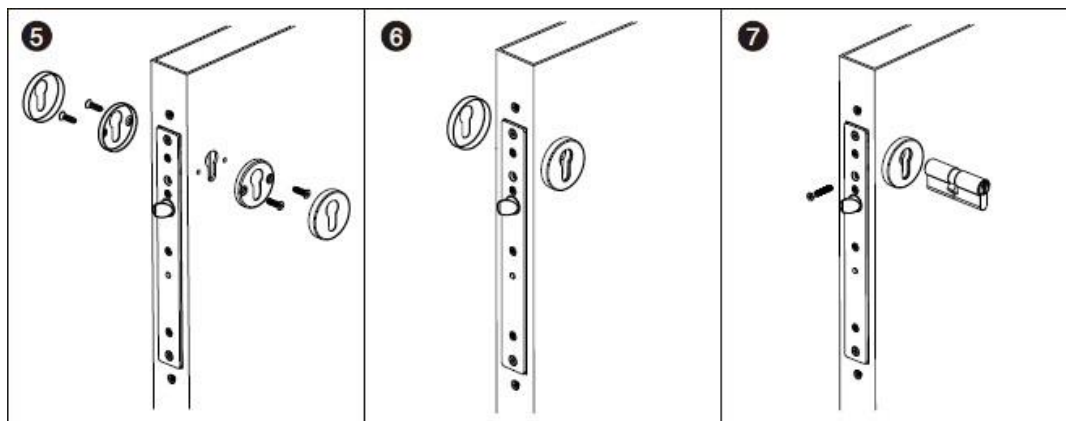
3 Drill and cut the door for the installation of cylinder.

4 Connect the latch to the power (12V DC) and test.





Installation Steps

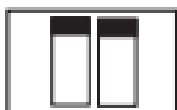


5 Assemble the latch body and the cylinder.

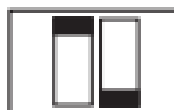
6 Fix the mirrors of the cylinders.

7 Tighten the cylinder with the longer screw.

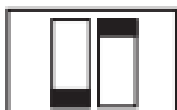
Timer setting



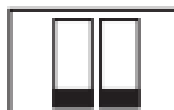
Configuration of timer to 0 seconds.



Configuration of timer for 6 seconds.



Configuration of timer for 3 seconds.



Configuration of timer for 9 seconds.





Electrical diagram

