



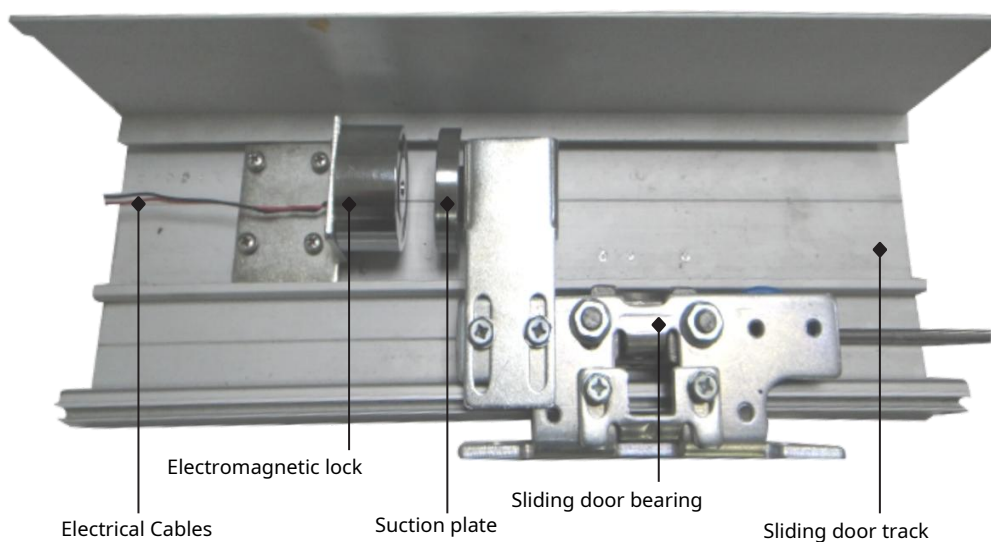
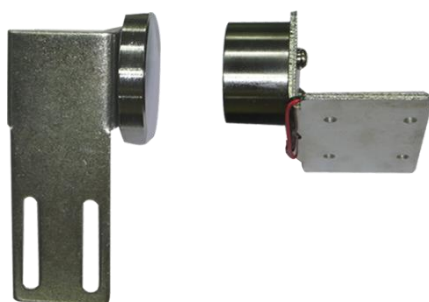
Triplo W

DZ808/DZ808-24

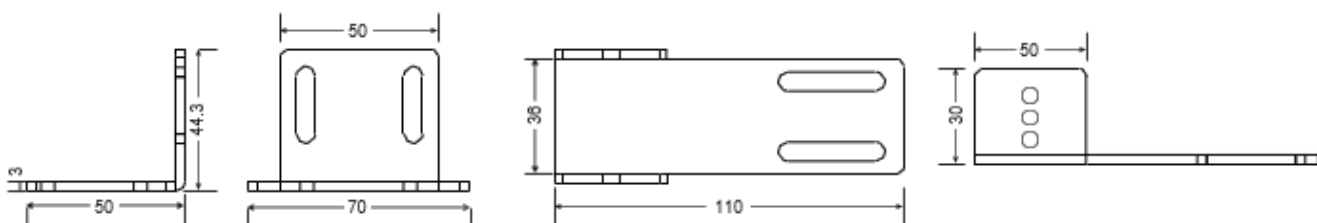


TECHNICAL SHEET

Electromagnetic Retainer 12/24VDC



Dimensions



Technical specifications

Voltage: DZ808 – 12VDC DZ808-24 – 24VDC
Consumption: 12V/212mA 24VDC/424mA
Strength: 60kg

Installation

1. Fix the bracket location holes by the suction piece, if the magnetic lock part is not aligned with the suction piece, please loosen the suction piece and install it on the other side of the bracket to align.
2. Fix the sliding positioning groove by the lock body, and adjust the lock body so that it is in the same vertical position with the suction piece.

