



TRIPLO W
Criamos Segurança!

Installation Guide
User Manual

TW-COOP

Automatic Chicken Coop Door





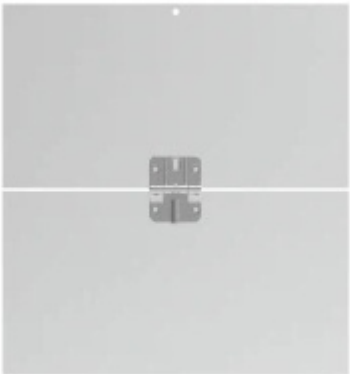
ATTENTION:

Leia o manual com atenção antes da instalação e guarde-o para uso futuro.

Guarde as chaves mecânicas num local seguro para, em caso de avaria ou emergência, poder abrir a porta mecanicamente.

Tenha atenção ao nível de bateria para poder efectuar a substituição das pilhas atempadamente.

www.triplow.pt

| No. | Picture | Name | Quantity |
|-----|---|-------------------------------|----------|
| 1 |  | Controlador | 1 |
| 2 |  | Calha A | 2 |
| 3 |  | Calha B | 2 |
| 4 |  | ,Porta em painéis de Alumínio | 1 |
| 5 |  | Parafusos de fixação | 14 |

Installation

1. Installing the batteries:

Unscrew the 4 screws on the controller, remove the front of the controller, unscrew the screw on the component

battery case fixing screw, remove the battery case and insert 2 AA batteries on each side of the case.

Screw the battery case back on and connect the cables to the respective guides. See Image 1.

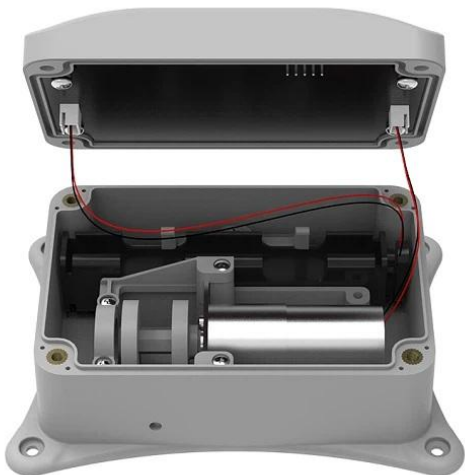


Image 1

2. Door installation:

Join tracks A and B. Mark the drilling as shown in Figure 2.

Install the tracks with the groove facing the door and screw them in. Slide the door panel through the groove from the top to the floor. The hinge should face outward. And the hole should be at the top of the door. Pass and secure the controller cord through the hole in the door. Install the controller.

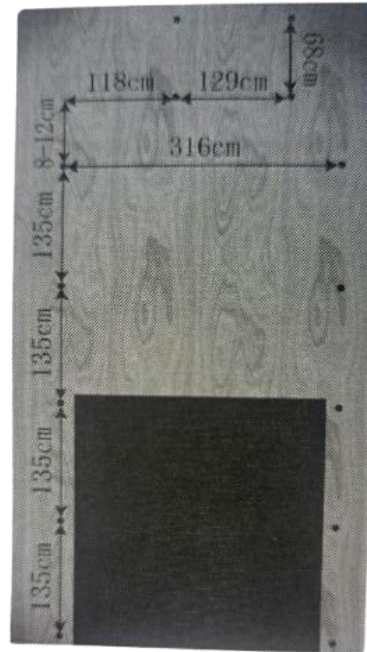


Image 2

Controller

The current time and battery capacity are visible on the home screen (Image 3).

Note: When using for the first time, you must program the time settings and the opening learning configuration.

Configuration menu:

Clock: current time programming **Open Time**

: opening time schedule **Close time:** closing

time programming **Learn Start:**

programming of the open and closed door position

Light Sensor: Programming the intensity of the status light

Light Open: Disable/enable Status Light

Resistance: closing speed programming

Reset:factory reset

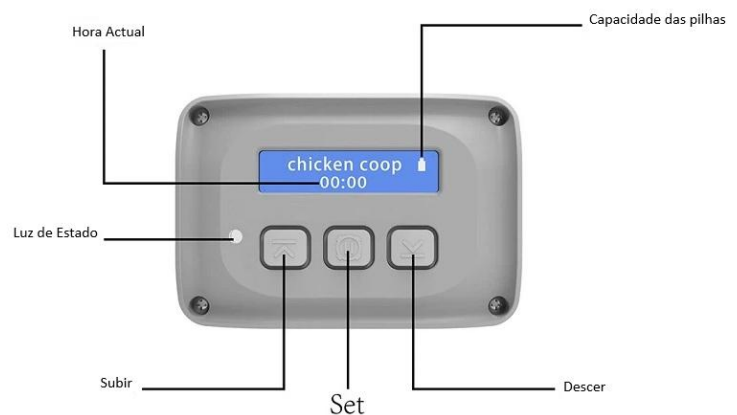


Image 3

1. Set Current Time:

Press the SET button for 5 seconds (see Image 3)

Press Up or Down until "Clock" appears on the display and select SET to enter. Press Up or Down to set the time and select SET to save.

Press Up or Down to set the minutes and select SET to save 2.

Calibrate Port:

Press the SET button for 5 seconds (see Image 3)

Press Up or Down until "Learn Start" appears on the display and select SET to enter.

The screen will show "Open the door", press Up until the door is completely open and press SET to save

The screen will show "Close the door", press Down until the door is completely closed and press SET to save

Press SET again when "Learning to complete" appears to save

NOTES: [1] When the door is completely open, there should be a distance between the door and the controller of between 7-10cm

[2] During the learning process, you can select SET to cancel the learning.

3. Enable manual opening and closing:

From the "Chicken Coop" Home Menu, select Up to enable manual opening, then open the door completely.

Door opening can be locked by pressing SET.

Select Down to enable manual closing, then close the door completely. The door can be locked by pressing SET.

NOTE: You must calibrate the door before opening and closing it.

4. Configure automatic opening and closing times:

The opening and closing settings are programmed separately, so you can choose to configure both functions or just one.

4.1. Opening Time:

Press the SET button for 5 seconds

Press Up or Down until "OPEN TIME" appears on the display and select SET to enter. Press Up or Down to set the time and select SET to save.

Press Up or Down to set the minutes and select SET to save Press Up or Down to set whether you want to activate or deactivate the automatic opening ON – Automatic opening active / OFF – Automatic opening deactivated

Press SET to save 4.2.

Closing Time:

Press the SET button for 5 seconds

Press Up or Down until "CLOSE TIME" appears on the display and select SET to enter. Press Up or Down to set the time and select SET to save.

Press Up or Down to set the minutes and select SET to save Press Up or Down to set whether you want to activate or deactivate automatic closing ON – Automatic closing active / OFF – Automatic closing deactivated

Press SET to save 5.

Activate sensor light:

Press the SET button for 5 seconds

Press Up or Down until "LIGHT" appears on the display and select SET to enter

In the "OPEN" menu, press Up or Down to set whether you want to activate or deactivate the light during automatic opening.

ON – Light active / OFF – Light deactivated, then press SET

In the "CLOSE" menu, press Up or Down to set whether you want to activate or deactivate the light during automatic closing.

ON – Light active / OFF – Light deactivated, then press SET

6. Exit the settings MENU:

Press Up or Down until "EXIT" appears on the display and select SET

Other Settings

Adjust the light intensity: Press the SET button for 5 seconds

Press Up or Down until "LIGHT SENSOR SET" appears on the display and select SET. Press Up or Down to choose the intensity, press SET to set the reading.

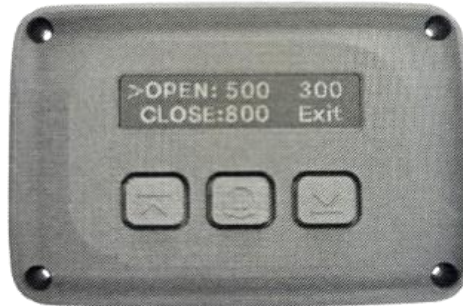


Image 4

Image 4 Caption: OPEN: 500 (Set the opening light intensity) / CLOSE: 800 (Closing light intensity) / 300 (Reading the ambient light intensity) / Exit

To adjust the closing and opening values, position the ">" symbol on OPEN (opening) or CLOSE (closing), press SET and then press UP or DOWN to change the parameters and then press SET to save. The parameters can be changed between 0 and 999. The factory default setting is 500.

NOTES: [1] The less intense you want the light, the higher the value, the more intense you want the light, the lower the value.

[2] Do not block the sensor

2.Set the motor resistance:

Press the SET button for 5 seconds (see Image 3)

Press Up or Down until "RESISTANCE" appears on the display and select SET to enter.

Press Up or Down to adjust the resistance.

Adjust according to the weight of the door, the heavier the door, the higher the resistance value you should set, if the door is lighter than the current one you should decrease the resistance.

Press SET to save.

NOTE: The greater the resistance, the greater the force exerted. 3.

RESET:

Press the SET button for 5 seconds Press

Up or Down until "RESET" appears

Press the SET button until the display returns to the initial information 4.

About batteries:

Do not use 9V batteries, otherwise it will damage the equipment.

Do not use rechargeable batteries, as their voltage varies depending on the ambient temperature.

Please always use AA alkaline batteries.

The upper right corner of the display indicates the battery status.

When the batteries need to be replaced, the display will remain functional but will not illuminate.

When you change the batteries, all settings are saved in memory, so there is no need to reconfigure them.