

INSTALLATION INSTRUCTIONS

INTRODUCTION

- 1) THE DEVICE IS SUITABLE FOR STEEL FIRE DOOR .
- 2) THIS PRODUCT IS SUITABLE FOR DOORS FOR UP TO 1320MM WIDTH AND UP TO 2500MM HEIGHT FOR MECHANICAL TEST.
(THE STANDARD PRODUCT IS FOR UP TO 2500MM HIGH, 1000MM WIDTH. IF THE WIDTH IS OUT OF THIS RANGE, NEED TO SPECIAL ORDER.)
- 3) THE DOOR MUST WEIGHT NO MORE THAN 200KG AND BE MOUNTED IN A GOOD-QUALITY WELL-MADE FRAME.
- 4) THIS DEVICE MUST BE FITTED BY COMPETENT PERSON.
- 5) IF THE DOOR IS FITTING WITH A DEVICE WHICH ALLOWS YOU TO OPEN IT FROM THE OUTSIDE, READ THE INSTRUCTIONS PROVIDED WITH THAT DEVICE.

HANDING REVEAL

If the panic device is to be used with an outside access device, and they are package separated and need to book separated.

EN1125 CLASSIFICATION NUMBER FOR THIS DEVICE

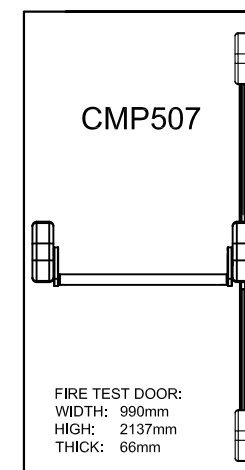
3	7	6	B	1	4	2	2	A	A
---	---	---	---	---	---	---	---	---	---

MARKING EXAMPLE:

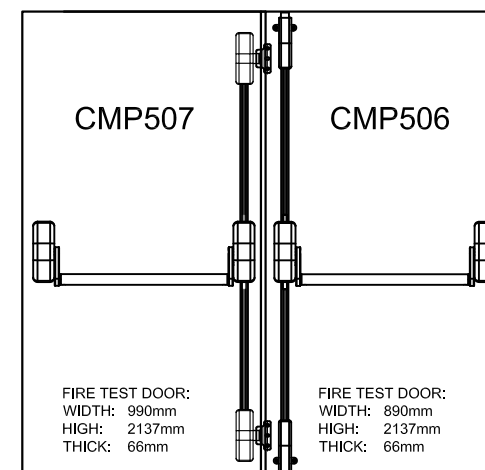
CE
0905
Camax
EN1125:2008
376B1422AA
0905-CPR-000390-03

DEVICE APPLICATION

SINGLE DOORS

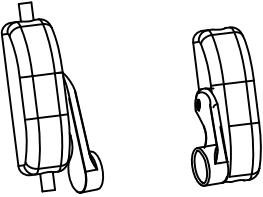

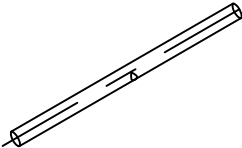
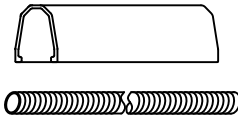




DOUBLE DOORS



1. PARTS CHECK

- 1) MAKE SURE THE CORRECT DEVICE IS BEING USED.
- 2) MAKE SURE ALL NEEDED PARTS ARE ON HAND.

<p>1) DEVICE</p> 	<p>4) UP AND DOWN LATCH, 2 PCS</p> 
<p>2) PUSH BAR, 1 PCS</p> 	<p>5) SCREW ROD 2 PCS; COVER 2 PCS</p> 
<p>3) STRIKE WITH SCREW</p>  <p>SHEET (2 PCS)</p> <p>STRIKE (2 PCS)</p>	<p>6) SCREW PACK</p>  <p>BRACKET (2 PCS)</p>

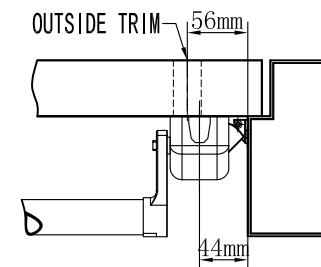
- 3) MAKE SURE OUTSIDE TRIM (IF BEING USED) HAS BEEN PROVIDED AND IS THE CORRECT HANDING.

2. DOOR LAYOUT

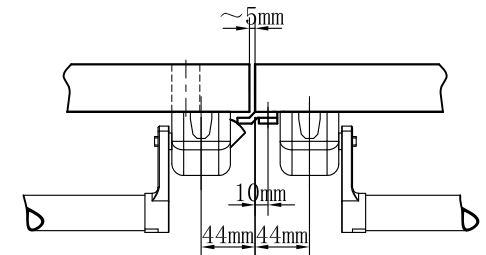
- 1) DOOR MUST BE FITTED AND HUNG PROPERLY BEFORE PROCEEDING.
- 2) MARK VERTICAL \mathbb{L} AND HORIZONTAL \mathbb{L} ON DOOR AND FRAME.

A) VERTICAL \mathbb{L} :

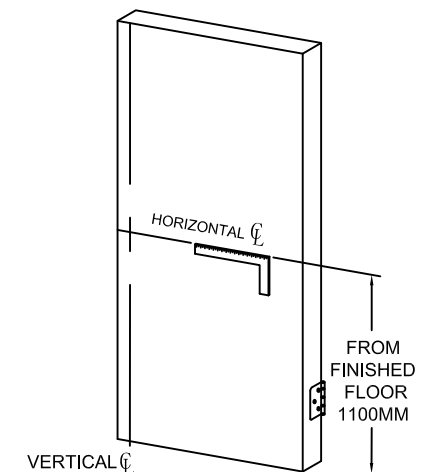
SINGLE DOOR APPLICATION



DOUBLE DOOR APPLICATION PUSH DEVICE x VERTICAL ROD



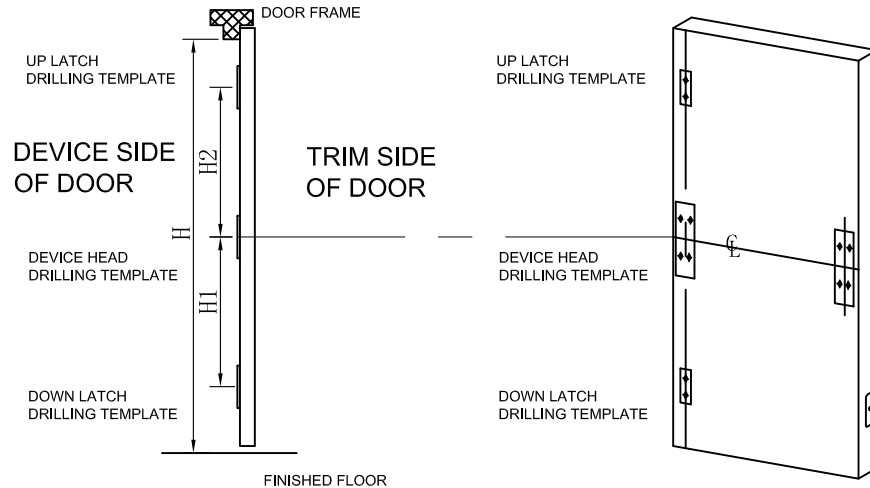
B) HORIZONTAL \mathbb{L} :



3. DOOR & HARDWARE PREPARATION

- 1) TAPE DRILLING TEMPLATES ON DOOR USING VERTICAL AND HORIZONTAL .
MOUNTING DIMENTION FOR REFERENCE:

$$H1=H2=700$$

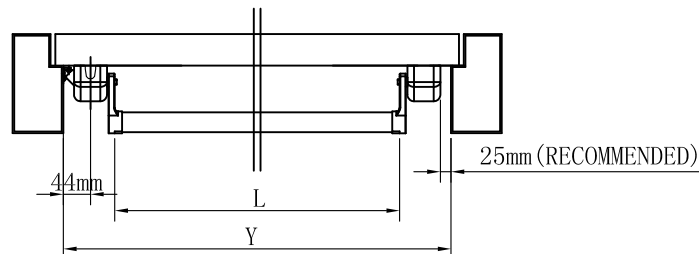


- 2) PREPARE HOLES FOR DEVICE, STRIKES AND LATCH.

- 3) IF USING OUTSIDE TRIM, PREPARE DOOR USING SEPARATE TRIM DIRECTION SHEET.

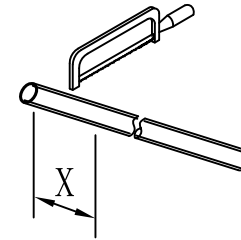
- 4) DETERMINE DEVICE LENGTH.

- A) THE DEVICE IS FIT FOR THE DOOR WIDTH FROM 400MM TO 1,000MM
B) MEASURE THE DOOR CLEAR WIDTH OF "Y".
C) LENGTH OF THE PUSH BAR TO BE CUTTED IS "X": $X=Y-150\text{mm}$

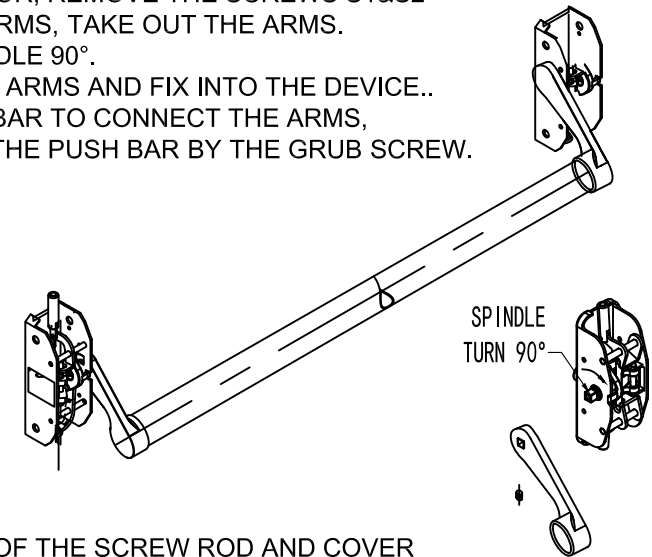


- 5) IF DOOR WIDTH IS LESS THAN 1,000MM, CUT PUSH BAR.
A) MARK THE PUSH BAR FROM THE END TO THE LENGTH "X".
B) CUT THE PUSH BAR TO MARKED DIMENSION AND REMOVE BURRS.

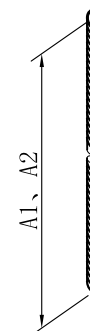
NOTE: FACTORY RECOMMENDS
SAWING RATHER THAN GRIND CUT TO
SIZE. GRINDING CAN DAMAGE THE
FINISH OF THE PUSH BAR AND SAWING
RESULTS IN LESS DAMAGE TO THE
PUSH BAR'S FINISH.



- 6) DEVICE FOR LEFT DOOR AND RIGHT DOOR
A) THE STANDARD PRODUCT IS FOR RIGHT DOOR.
B) IF FOR LEFT DOOR, REMOVE THE SCREWS S1&S2 THAT FIX THE ARMS, TAKE OUT THE ARMS.
C) TURN THE SPINDLE 90°.
D) EXCHANGE THE ARMS AND FIX INTO THE DEVICE..
E) PUT THE PUSH BAR TO CONNECT THE ARMS, BUT DON'T FIX THE PUSH BAR BY THE GRUB SCREW.



- 6) CUT THE LENGTH OF THE SCREW ROD AND COVER ACCORDING TO BELLOW LENGTH REQUIREMENT..



$$A1=H1-100\text{mm}$$

$$A2=H2-100\text{mm}$$



$$B1=H1-125\text{mm}$$

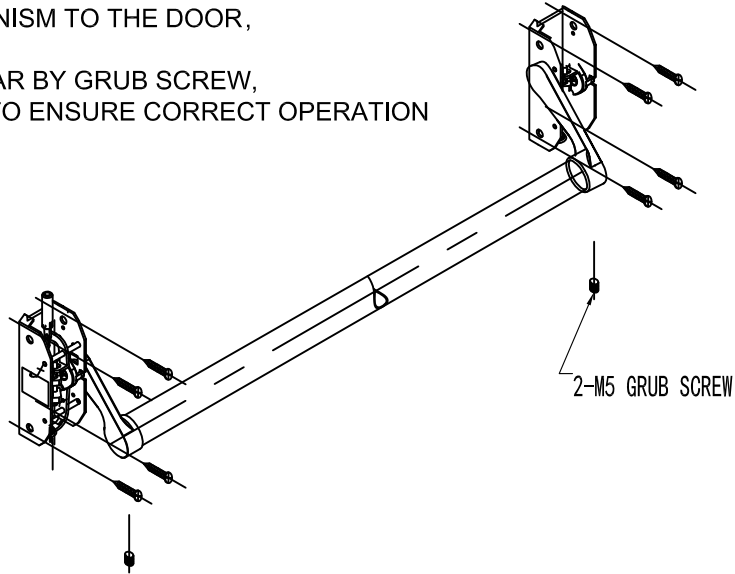
$$B2=H2-125\text{mm}$$

4. HARDWARE INSTALLATION

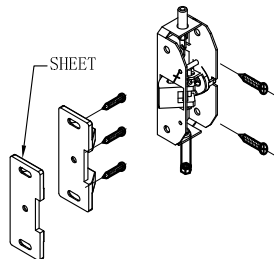
1) IF USING OUTSIDE TRIM OR THROUGH BOLTS, MOUNT TRIM PER DIRECTIONS IN TRIM BOX, OR INSTALL OUTSIDE THROUGH BOLTS.

2) INSTALL MECHANISM TO THE DOOR,

3) FIX THE PUSH BAR BY GRUB SCREW,
TEST THE UNIT TO ENSURE CORRECT OPERATION



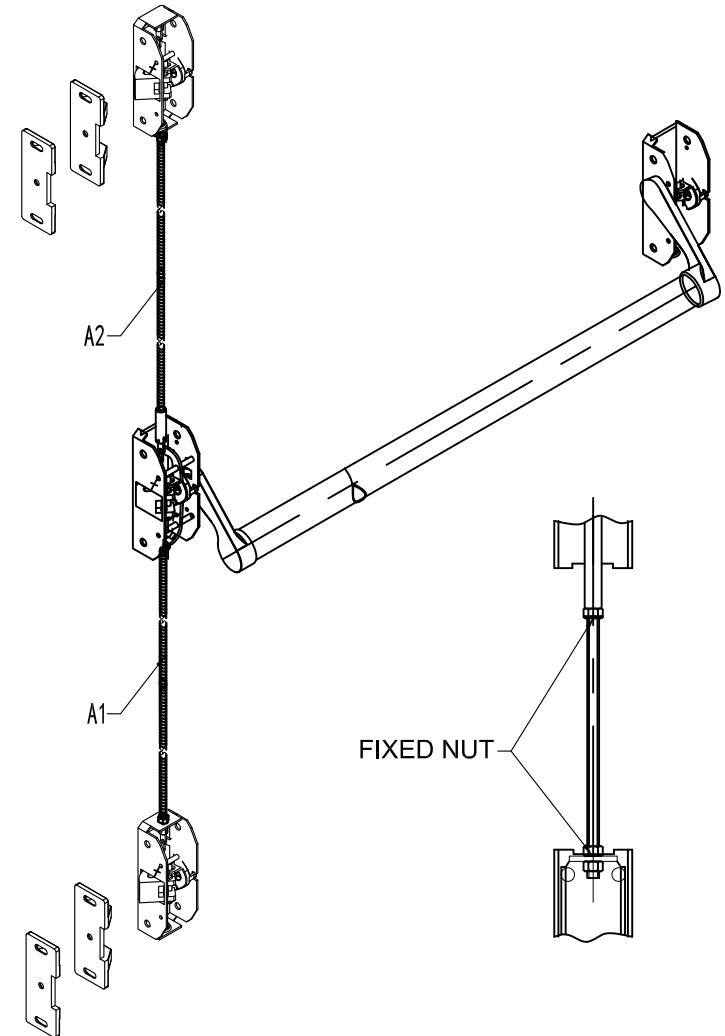
4) INSTALL UP STRIKE AND DOWN STRIKES, AND THEN INSTALL PULLMAN LATCH BODIES TO ENSURE THAT THE LATCHBOLTS ENGAGE SECURELY TO THE STRIKE.



6) INSTALL TOP THREADED ROD INTO CONNECTOR PIECE ON TOP PULLMAN LATCH, HOLD THREADED ROD IN VERTICAL POSITION READY TO CONNECT WITH MAIN DEVICE.

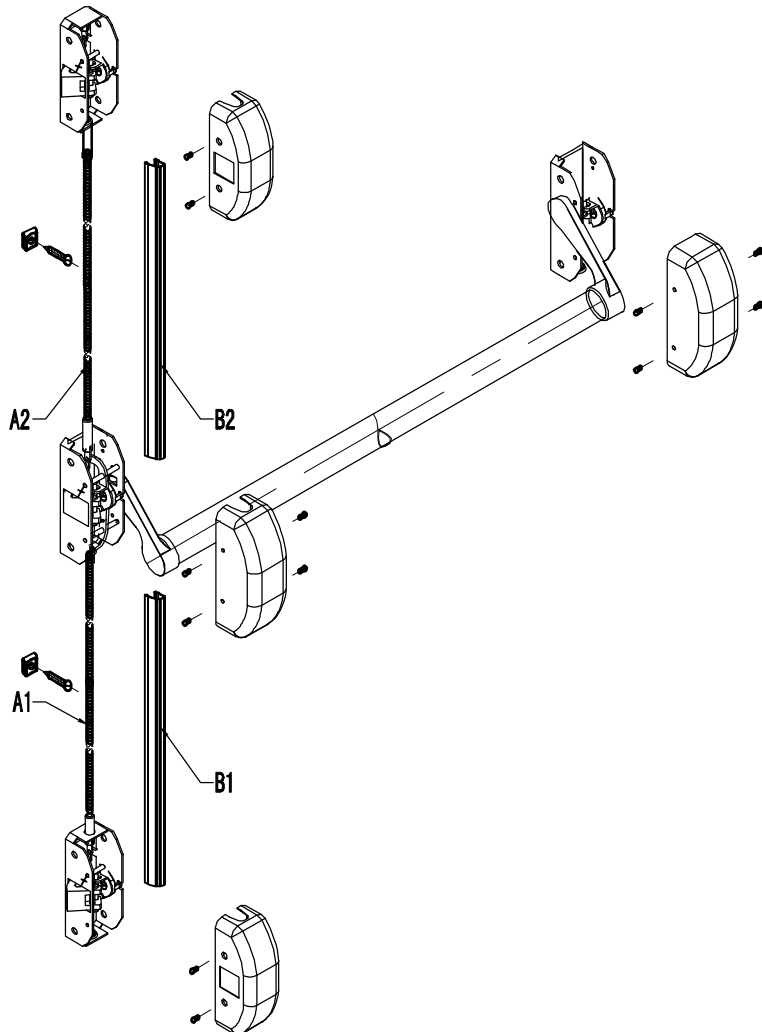
THIS WILL ALLOW YOU TO MARK THE ROD GUIDES POSITIONS AND FIX INTO PLACE. NOW CONNECT MAIN THREADED ROD TO THE ROD CONNECTION ON THE DEVICE AND SCREW INTO PLACE USING FIXING NUT.

TEST THE UNIT TO ENSURE CORRECT OPERATION



7) Install each cover in correct sequence and test the product at each stage to ensure correct operation.

- A)** Install rod covers (again may need to be cut to size) operate the unit to check for binding
 - ensure rod cover is not too long to prevent the pullman latch mechanism from operating.
- B)** Install main device head cover - Test the unit to ensure correct operation.
- C)** Install device end cap onto mounting bracket.
- D)** Install pullman latch covers & test the unit to ensure correct operation.



Annex A

Installation and fixing instructions

- 

Figure A.1

Annex C

Maintenance instructions

To ensure performance in accordance with this document, the following routine maintenance checks should be undertaken at intervals of not more than one month

- ### Important note:

The safety features of this product are essential to its compliance with EN 1125:2008, no modification of any kind, other than those described in these instructions are permitted.

These products are intended for use on outward opening fire panic route doors.
Include single door or double door(active door)

After Installation and on a periodic basis spray the touch bar device and pull mans with WD40.


Maximum door distortion of 5mm is allowed to ensure safe exit at all times.

Maximum of 1000N pulling force achieved against the fixing screws applied.

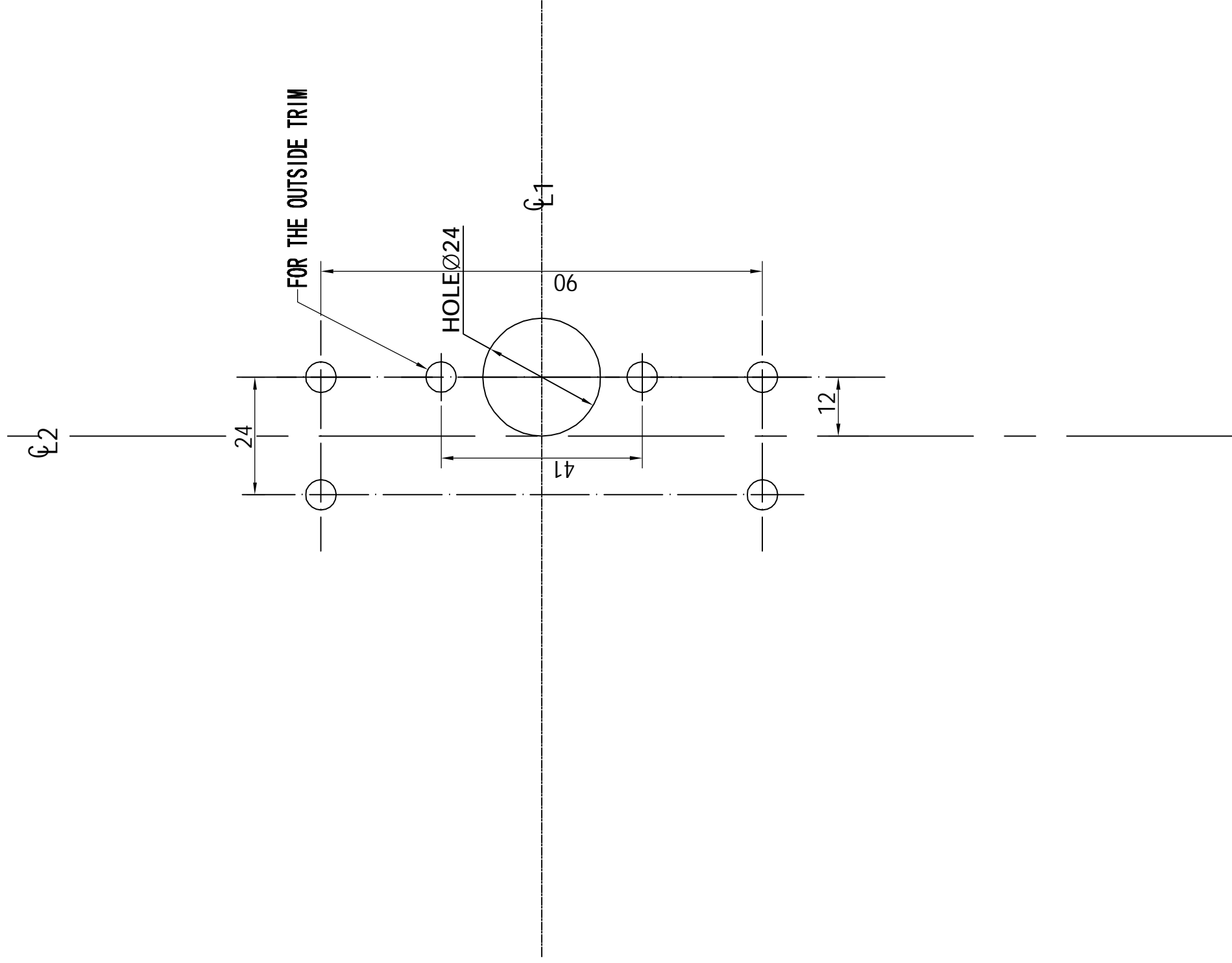
This product is suitable for use on steel fire doors:

Category of projection : Category 2

Field of door application : Category A

	Jiangmen Camax Hardware Co.,Ltd Building D/2#,No.173,Jianshesanlu, Jiangmen,Guangdong									
0905-CPR-000390-03 DOP XXXXXX	Panic Exit Device					20				
EN 1125:2008	3	7	6	B	1	4	2	2	A	A
Dangerous substances: None										

TEMPLATE FOR LOCK BODY



TEMPLATE FOR LATCH

