

CMP807 SURFACE  
VERTICAL ROD  
PANIC & FIRE  
EXIT DEVICES

INSTALLATION  
INSTRUCTIONS

WARNING

The safety features of this product are essential to its compliance with EN 1125. No modification of any kind, other than those described in these instructions, is permitted.

Panic devices manufactured in accordance with EN 1125 will provide a high degree of safety and reasonable security, provide they are fitted to doors and frames of equal quality and in good condition. The door must be correctly hung and free from binding.

IMPORTANT

This requirement must be installed by a competent fitter. If these fixing instructions are not followed, then no responsibility for these fixing instructions must be passed to the user after installation has been completed.

DOOR SIZES

This product is suitable for doors up to

- Size A, 650mm to 850mm wide, 2500mm high
- Size B, 850mm to 1166mm wide, 2500mm high
- (Doors above 2500mm is out of scope of EN1125)

The standard product is for 850mm to 1320mm wide, 2133mm high. Out of this range, need to special order.

MAINTENANCE

It is recommended that the following routine maintenance checks be undertaken at intervals of not less than one month by the occupier or his approved representative:

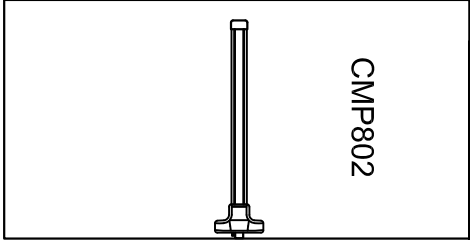
- a) Inspect and operate the panic device to ensure that all components are in a satisfactory working condition;
- b) Ensure that the keepers are free from obstruction.

HANDING REVEAL

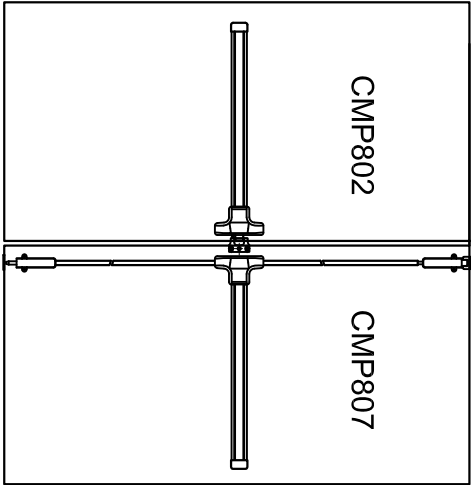
If the panic device is to be used with an outside access device, and they are package separated and need to book separated.

DEVICE APPLICATION

SINGLE DOORS



DOUBLE DOORS



# 1. PARTS CHECK

- 1) MAKE SURE THE CORRECT DEVICE IS BEING USED.
- 2) MAKE SURE ALL NEEDED PARTS ARE ON HAND.

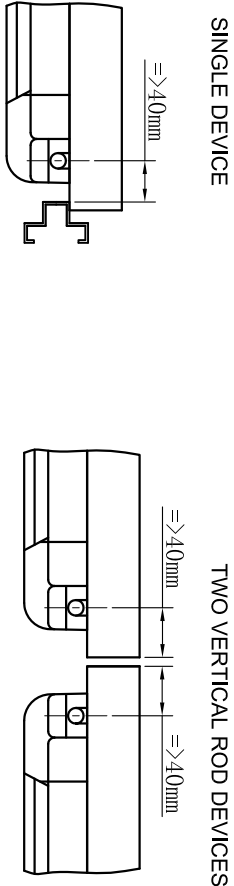
1) DEVICE	4) SCREW PACK A) MOUNTING BRACKET AND END CAP WITH M4X8 SCREW(1 SET) B) COTTER KEY(2 QTY) C) ROD GUID (2 QTY) WITH SCREW 3.5X12(4 QTY) D) M5X35 SEXUAL BOLT(6 QTY) E) M5X25 BOLT (6 QTY)	
2) STRIKE TOP STRIKE BOTTOM STRIKE STRIKE FOR DOUBLE DOOR		
3) LATCHES & BOTTOM BOLTS TOP LATCH (1 QTY) BOTTOM LATCH (1 QTY)	6) VERTICAL RODS (LENGTHS FOR 2133MM OPENINGS) A) TOP ROD=950MM(1 QTY) B) BOTTOM ROD = 835MM(1 QTY)	

- 3) MAKE SURE OUTSIDE TRIM (IF BEING USED) HAS BEEN PROVIDED AND IS THE CORRECT HANDING.

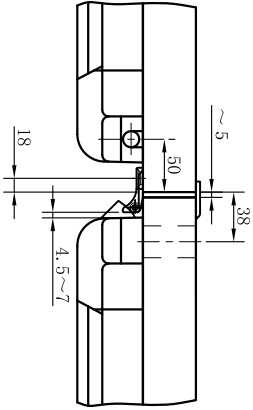
# 2. DOOR LAYOUT

- 1) DOOR MUST BE FITTED AND HUNG PROPERLY BEFORE PROCEEDING.
- 2) MARK VERTICAL  $\phi$  AND HORIZONTAL  $\phi$  ON DOOR AND FRAME.

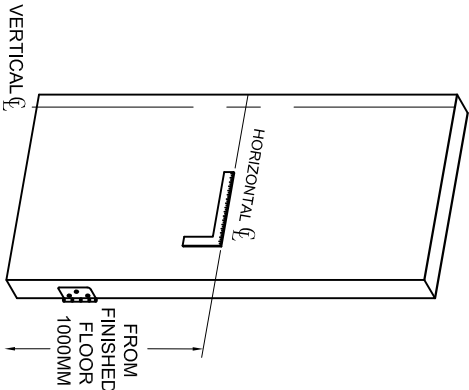
A) VERTICAL  $\phi$  :



VERTICAL ROD x RIM DEVICE  
(CMP301 OR CMP302 REQUIRED FOR THIS APPLICATION)

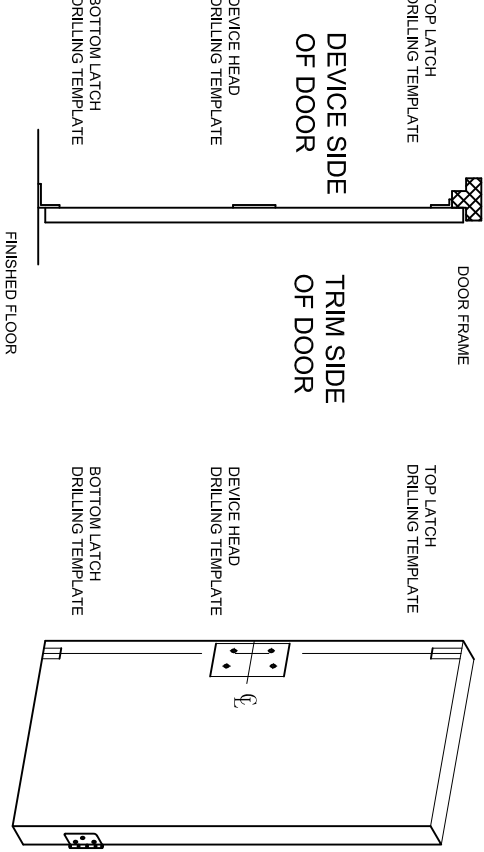


B) HORIZONTAL  $\phi$  :



### 3. DOOR & HARDWARE PREPARATION

1) TAPE DRILLING TEMPLATES ON DOOR USING VERTICAL  $\Phi$  AND HORIZONTAL  $\Phi$ .

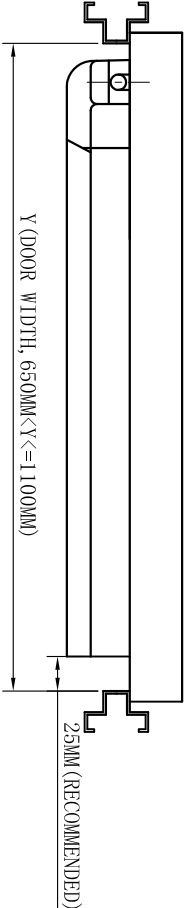


2) PREPARE HOLES FOR DEVICE, STRIKES AND LATCHES.

3) IF USING OUTSIDE TRIM, PREPARE DOOR USING SEPARATE TRIM DIRECTION SHEET.

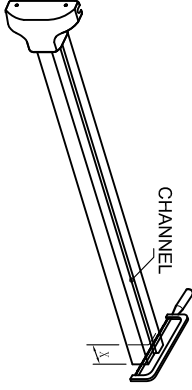
4) DETERMINE DEVICE LENGTH.

- A) THE DEVICE IS FIT FOR THE DOOR WIDTH FROM 850MM TO 1100MM
- B) MEASURE THE DOOR WIDTH OF "Y".
- C) LENGTH OF DEVICE TO BE CUTTED IS "X":  $X = 1100 - Y$



5) IF DOOR WIDTH IS LESS THAN 1100MM, CUT THE DEVICE.

- A) MARK THE DEVICE FROM THE END TO THE LENGTH "X".
- B) CUT BOTH CHANNEL AND CHANNEL COVER TO MARKED DIMENSION AND REMOVE BURRS.



**NOTE: FACTORY RECOMMENDS SAWING RATHER THAN GRIND CUT TO SIZE. GRINDING CAN DAMAGE THE FINISH OF THE DEVICE AND SAWING RESULTS IN LESS DAMAGE TO THE DEVICES'S FINISH.**

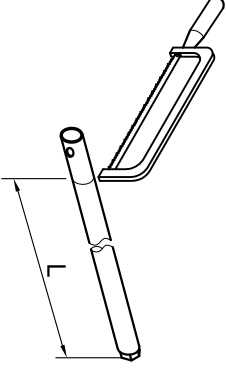
7) IF DOOR OPENING IS NOT AND LESS THAN 2133MM, DETERMINE TOP ROD LENGTH BASED ON 1000MM HORIZONTAL FROM FINISHED FLOOR, MODIFY TOP ROD TO REQUIRED LENGTH.

A) SUBTRACT DOOR OPENING FROM 2133MM OPENING.

B) SUBTRACT ANSWER FROM TOP ROD FROM 950MM TO DETERMINE TOP ROD LENGTH L (EXAMPLE: 2000MM OPENING - 2133-2000=100, 950-100=850MM TOP ROD).

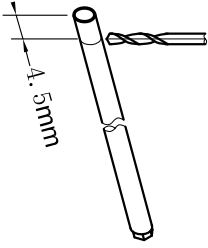
C) MARK RODS TO REQUIRED LENGTH.

D) CUT ROD AT MARKED LOCATION.



**NOTE: ROD MUST BE MEASURED FROM THREADED PORTION OF RODS. DO NOT CUT ROD AT END WITH INTERNAL THREADS.**

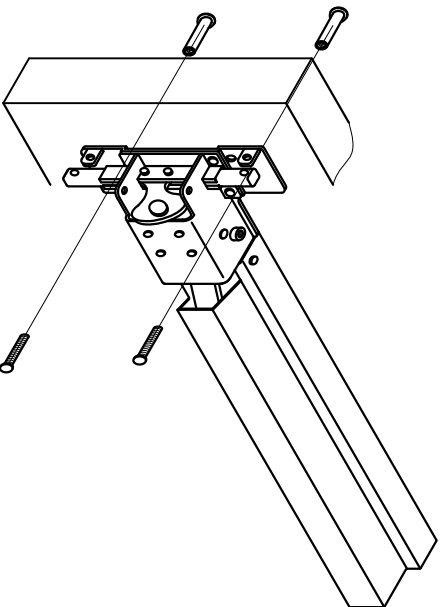
E) DRILL COTTER KEY CONNECTION HOLE. DRILL 4.0MM DIA. HOLE THRU ON VERTICAL ROD 4.5MM FROM END OF ROD JUST CUT.



## 4. HARDWARE INSTALLATION

1) IF USING OUTSIDE TRIM OR SEXBOLTS, MOUNT TRIM PER DIRECTIONS IN TRIM BOX.

2) FIX DEVICE BY SEXUALBOLT AND THROUGH BOLT.

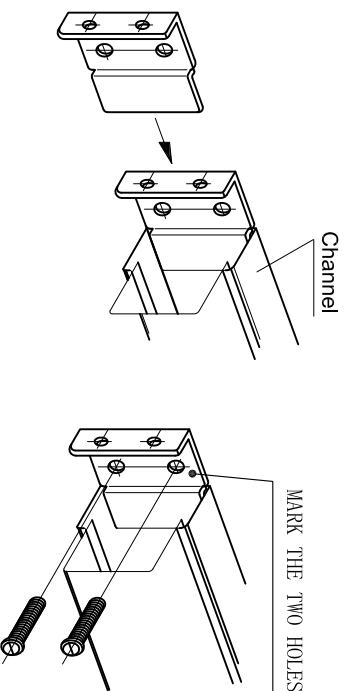


3) INSTALL END CAP MOUNTING BRACKET USING MOUNTING SCREW.

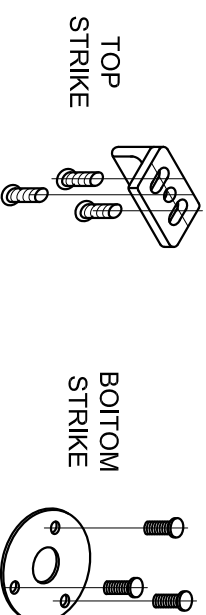
A) SLIDE MOUNTING BRACKET INTO CHANNEL.

B) MARK MOUNTING HOLES, AND PREPARE THE HOLES.

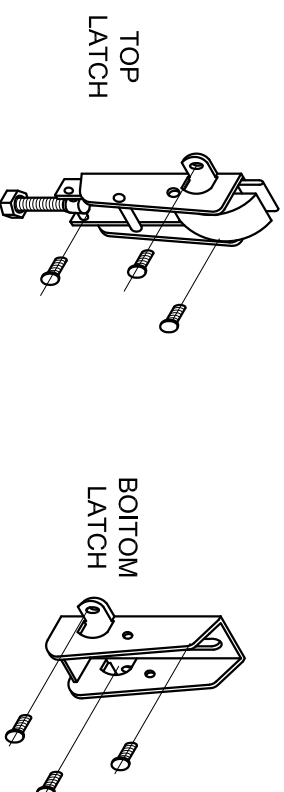
C) INSTALL MOUNTING SCREWS



4) INSTALL THE TOP STRIKE AND THE BOTTOM STRIKE



5) INSTALL TOP AND BOTTOM LATCHES.

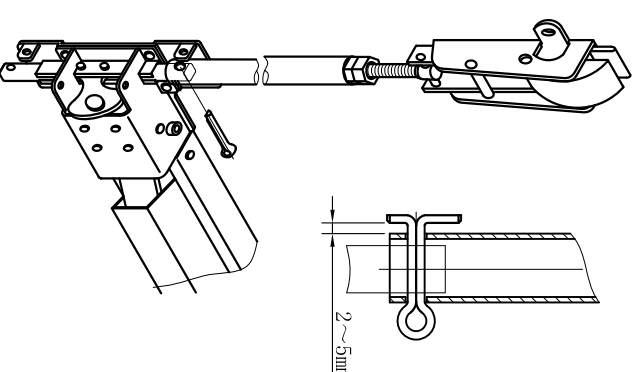


6) TOP ROD INSTALLATION:

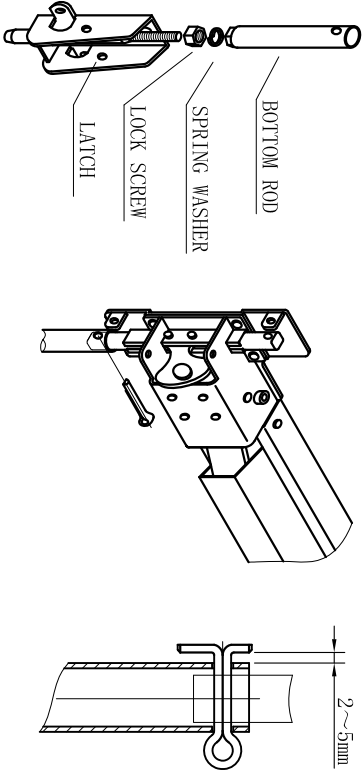
A) PLACE THE TOP ROD INTO THE BOLT OF TOP LATCH, AND SLIDE THE SLIDEBAR INTO THE BOTTOM OF TOP ROD.

B) ADJUST THE SREW OF TOP ROD TO MAKE SURE THE COTTER KEY HOLE ALIGNED WITH THE HOLE IN SLIDEBAR. PUT THE THE COTTER KEY INTO THE HOLE(NOTE: DON'T TIGHT THE COTTER KEY).

C) TEST THE TOP ROD, IF IT LOCK AND SMOOTH WELL, TIGHT THE COTTER KEY. D) IF THE TOP ROD DOESN'T WORK WELL, TAKE OUT THE COTTER KEY, ADJUST THE ADJUSTMENT SCREW, REPEAT STEP OF B)&C) UNTIL IT LOCK AND WORK WELL.

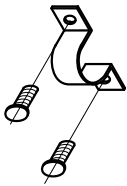


7) PLACE THE BOTTOM ROD TO BOTTOM LATCH, AND SLIDE THE SLIDEBAR INTO THE TOP OF BOTTOM ROD. ADJUST THE SREW OF BOTTOM ROD TO MAKE SURE THE COTTER KEY HOLE ALIGNED WITH THE HOLE IN SLIDEBAR, TIGHT THE COTTER KEY.



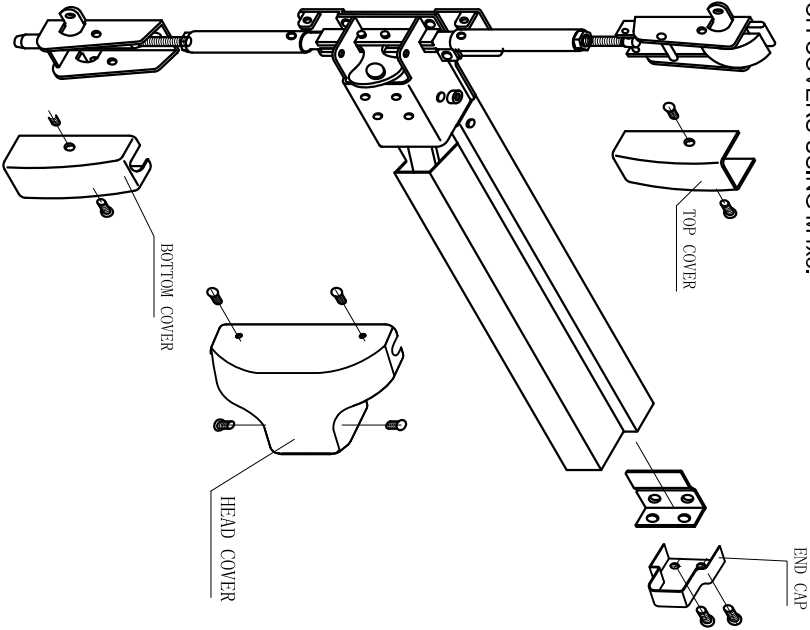
# 8. ROG GUID INSTALLATION

ATTACH ROD GUIDES TO ROD EQUIDISTANT BETWEEN THE LATCHES AND DEVICE HEAD. DRILL THE HOLE, AND FIX IT.

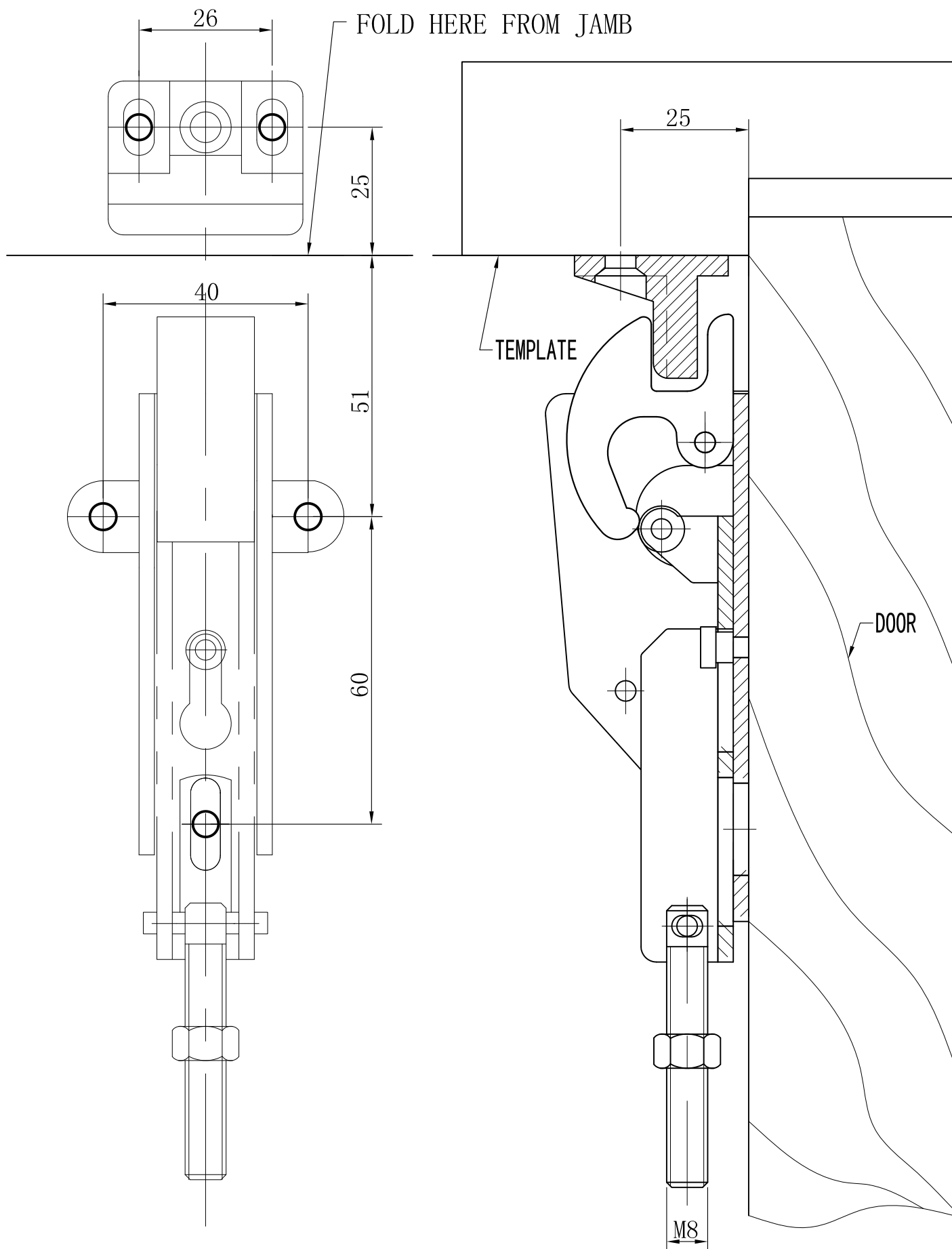


NOTE: THE ROD GUID SHOULD NOT BLOCK THE MOVEMENT OF THE ROD.

- 10) APPLY COVERS.
  - A) ASSEMBLE COVER TO HEAD ASSEMBLY USING M4x8 SCREWS.
  - B) ATTACH END CAP USING M4x8 SCREWS.
  - C) ATTACH LATCH COVERS USING M4x8.



# TEMPLATE OF TOP LATCH AND TOP STRIKE



# TEMPLATE OF BOTTOM LATCH AND BOTTOPM STRIKE

