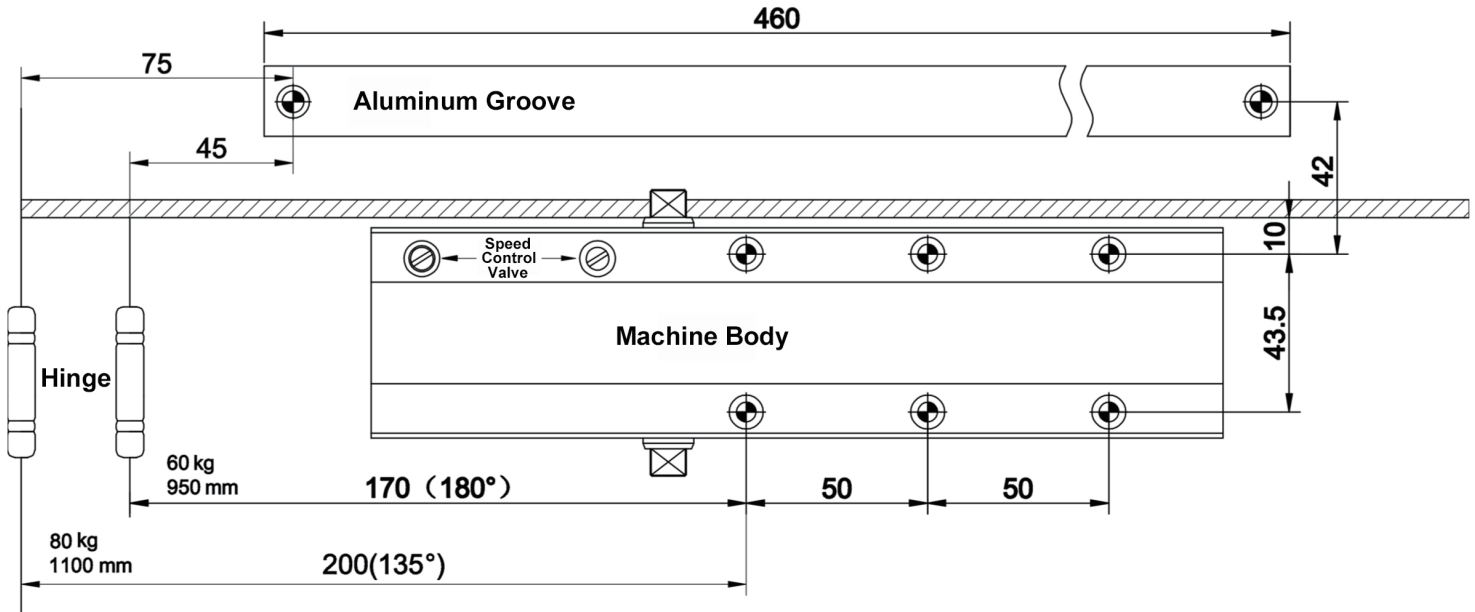


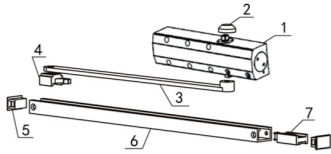
Sliding Door Closer Manual

Installation diagram of sliding door: The installation dimensions of the left and right doors are the same



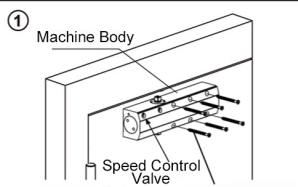
Part name and combination diagram:

NO	Part Name	Qty
1	Door Closer	1
2	Plastic Cover	1
3	Main Arm	1
4	Slider	1
5	Side Cover	2
6	Slide Rail	1
7	Locator	1



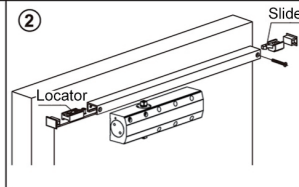
Installation steps:

(The following figure is a standard installation diagram)
The installation method for left and right doors is the same

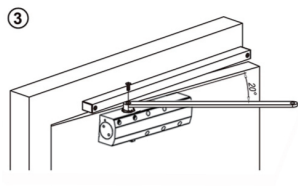


Wooden Door: $\phi 5 \times 60 \text{mm}$ self tapping screw
Metal Door: M5X45mm Screws

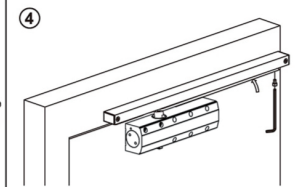
Choose the installation method, drill holes according to the installation dimensions on the drawing, and install the door closer body on the door.



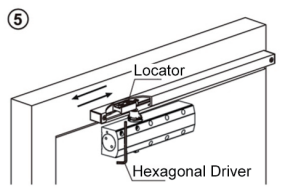
Install the slide rail onto the door frame according to the dimensions specified in the drawing



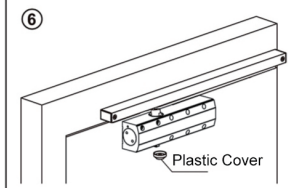
Install the rocker arm and tighten the hexagonal fixing screw on the gear shaft, and pre press the rocker arm 45 degrees to engage with the slide rail.



Use a hexagonal key to tighten the M8 fixing bolt

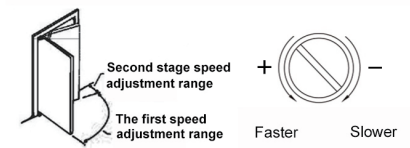
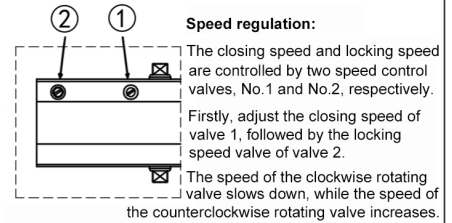


Adjust the door opening angle by sliding the positioning block left and right



Install plastic cover

Speed adjustment method:



Installation instructions:

- Determine the installation method of the door closer based on the actual situation and usage requirements of the door.
- After determining the installation method, draw the dimensions on the door leaf and door frame according to the installation dimension diagram, drill holes, and install the door closer and slide rail. The plastic covers on both ends of the slide rail should be inserted before the fixing screws of the slide rail are screwed in, otherwise tightening the installation screws of the slide rail will deform the slide rail.
- After installing the door closer body, install the rocker arm onto the square pivot shaft of the door closer, and install a plastic decorative cover on the other pivot shaft. The rocker arm can be parallel to the body and preloaded at a 45 degree angle (whether preloading is required depends on the installation method), and then tighten the connecting screws between the rocker arm and the slider.
- The metal fixing block on the slide rail is used to position the door closer when opening the door. When adjusting the positioning angle loosen the hexagon socket screw, and when moving the fixing block to the appropriate position, tighten and fix it. No need for positioning or installation of fixed blocks.
- Adjust the closing speed of the door closer. It is recommended to adjust the closing speed from 90 degrees to 0 degrees and the closing time should be 5 to 6 seconds. The speed control valve cannot be rotated out of the body, otherwise it will cause oil leakage and misalignment of the door closer.

Specifications and functions

Applicable door width: 950–1100 mm
The first paragraph closure range: $180^\circ - 15^\circ$
Second paragraph closure range: $15^\circ - 0^\circ$



NOTE:

- The body is equipped with a 90 degree positioning, and it is not recommended to use sliding rails for installation.
- The speed control valve cannot be rotated out of the door otherwise it will cause oil leakage and imbalance.
- The maximum opening angle of the sliding door closer is 180 degree
- When the positioning block is locked, the door pushed towards an angle greater than the positioning block, otherwise it may cause damage to the door.
- Do not disassemble the door closer body (which has a strong spring inside).