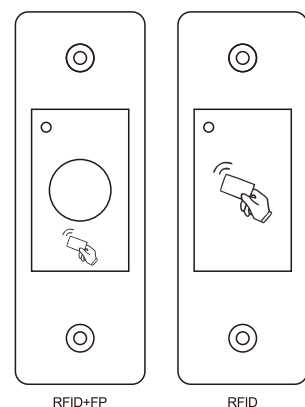


## Embedded Access Control



RFID+FP

RFID

User Manual

## INTRODUCTION

The device is a mini metal case standalone RFID / Fingerprint access control with embedded design, support 125KHz EM Card. It is an ideal choice to install on door frame. IP66 waterproof is very suitable for outdoor use. It supports master card and master fingerprint for easy operation.

### Features

- > Embedded design with mini size
- > Metal case and waterproof, conforms to IP66
- > User capacity:
  - RFID Version: 3000 cards.
  - RFID+FP Version: 100 Fingerprints and 3000 cards.
- > Card type: 125KHz EM card
- > One programmable relay operation
- > Latch mode to hold door or gate open
- > Tri-colour LED status display

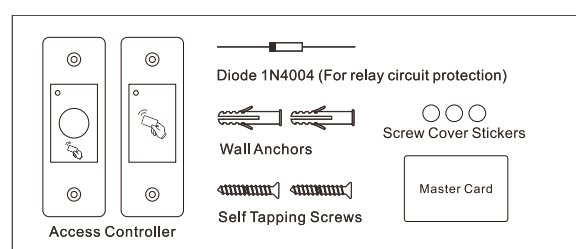
### Specifications:

<b>User Capacity</b>	3000 Cards
RFID Version	100 Fingerprints and 3000 Cards
RFID+FP Version	
<b>Operating Voltage</b>	9-24V DC
Idle Current	≤25mA
Active Current	≤100
<b>Proximity Card Reader</b>	EM
Radio Technology	125KHz Proximity Card
Read Range	2cm
<b>Wiring Connections</b>	Relay Output, Exit Button
<b>Relay</b>	One (NO, NC, Common)
Adjustable Relay Output Time	0-99 Seconds (5 seconds default)
Lock Output Load	2 Amp Maximum

- 01 -

<b>Environment</b>	<b>Meets IP66</b>
Operating Temperature	RFID: -40°C ~ 60°C (-40°F ~ 140°F)
	RFID+FP: -25°C ~ 60°C (-13°F ~ 140°F)
Operating Humidity	20%RH-98%RH
<b>Physical</b>	<b>Zinc-alloy Plate</b>
Colour	Silver & Black
Dimensions	L115×W40×H30 (mm)
Unit Weight	RFID: 105g, RFID+FP: 115g
Shipping Weight	RFID: 185g, RFID+FP: 195g

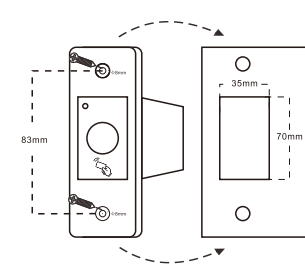
### Carton Inventory



### INSTALLATION

- Drill 2 holes(A, C) on the wall for the screws and one hole for the device
- Knock the supplied rubber bungs to the screw holes(A, C)
- Thread the cable through the hole(B)
- Attach the unit to the hole(B)
- Fix the unit firmly on the wall with 2 flat head screws
- Cover the screws by Screw Cover Stickers

- 02 -



### Wiring

Wire Colour	Function	Notes
Yellow	OPEN	Request To Exit Input(Rex)
Red	Power +	9-24V DC Regulated Power Input
Black	GND	Ground
White	NO	Normally Open Relay Output
Brown	COM	Common Connection For Relay Output
Green	NC	Normally Closed Relay Output

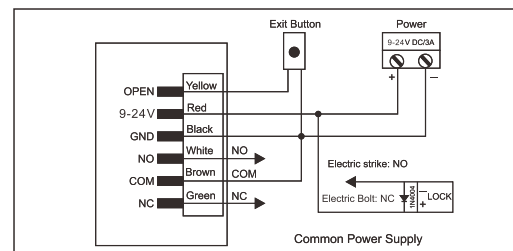
### Sound and Light Indication

Operation Status	LED	Buzzer
Stand by	Red light bright	-
Enter into adding master mode	Yellow light bright	One beep
Enter into programming mode	Yellow light bright	Two beeps
Operation error	-	Three beeps
Exit from the programming mode	Red light bright	One beep
Open lock	Green light bright	One beep

- 03 -

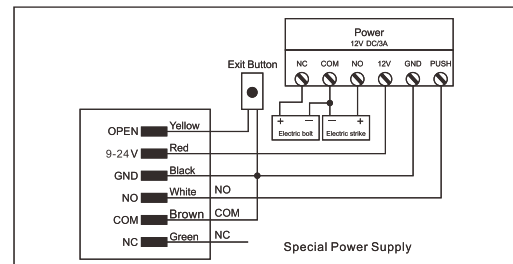
## Connection Diagram

Common Power Supply:



**Attention:** Install a 1N4004 or equivalent diode is needed when use a common power supply or the device might be damaged. (1N4004 is included in the packaging)

Access Control Power Supply:



- 04 -

## PROGRAMMING

Programming will be vary depending on access configuration. Follow the instructions according to your access configuration.

### General Programming Information

**Add Master Fingerprint / Card (RFID version doesn't support fingerprints)**  
Power off, press the Exit Button, hold it and power on, there will be one beep, release the Exit Button, then there will be a long beep, and the LED light turns into yellow. Then input any fingerprint three times or read any EM card, it will be the Master Fingerprint / Card.  
**Remark:** RFID+Fingerprint version supports one Master Fingerprint and one Master Card max. If there's only Master Fingerprint or only Master Card added, it will take 10s to exit Adding Master Mode. If there're both Master Fingerprint and Master Card added, it will auto exit Adding Master Mode immediately.  
There is Master Card included in the packaging. If need change Master Card, just read the new card in Adding Master mode, the new Master Card will Replace old one automatically, no need to delete old Master Card at first.

### Add User Fingerprint / Card (RFID version doesn't support fingerprints)

1. Input Master Fingerprint or read Master Card.
2. Input User Fingerprint three times or read User Card (Repeat step 2 for additional users).
3. Input Master Fingerprint or read Master Card again.

### Delete User Fingerprint / Card (RFID version doesn't support fingerprints)

1. Input Master Fingerprint or read Master Card TWICE.
2. Input User Fingerprint once or read User Card (Repeat step 2 for additional users).
3. Input Master Fingerprint or read Master Card again.

- 05 -

### Set Relay Configuration

Power off, press the Exit Button, hold it and power on, there will be one beep, still hold it and wait to hear two beeps, then release the Exit Button, there will be a long beep, and the LED light turns into yellow. Then it's the Relay Configuration Mode.

#### Latch Mode:

Press the Exit Button and hold it, until hearing three beeps, release the Exit Button. Set the relay to Latch mode and exit the Relay Configuration Mode.

#### Pulse Mode:

Press the Exit Button and hold it, until hearing three beeps, still hold it, and then there will be one beep every second, after X beeps, release Exit Button, set the relay to Pulse Mode and exit Relay Configuration Mode. (X means 1-99, for example, after 10 beeps, release Exit Button, the relay time will be set to 10s. Default relay time is 5s.)

**Remark:** If no programming in the Relay Configuration Mode for 10s, it will exit the mode automatically.

#### Reset to Factory Default:

To reset to factory default, power off, press the Exit Button, hold it and power on, there will be one beep, still hold it, and then there will be two beeps, keep to hold it, until there are three beeps, then release the Exit Button, the LED light turns into yellow. And press the Exit Button again in a short time, hold it for 10s, there will be a long beep, and the LED light turns into Red, the device has been reset successfully.

**Remarks:** Reset to factory default, all the users' information will be erased. Use with caution!

- 06 -